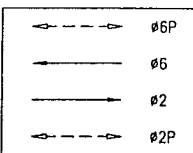
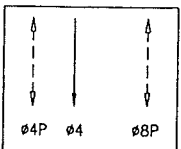


As-Built
Sales Force
Phoenix Electric
9/25/19
received from N.Wong

PHASE DIAGRAM:



PHASES 2 & 6



PHASES 4 & 8

PHASE SEQUENCE:

G		Y	R		MISSION ST.
R			G	Y	1ST STREET
WM	FRH		RH		PED XING 1ST STREET
RH			WM	FRH	PED XING MISSION E/S
RH			WM	FRH	PED XING MISSION W/S

SHEET NOTES:

- FOR BASEMENT ACCESS, PLEASE CONTACT,
A) RYAN VAN OMMEREN @ 442-7097
ERIC SHORT @ 442-7088
88 1ST STREET(C/O GOLDEN GATE UNIVERSITY; NW CORNER)
B) DONALD NAVARRETE @ 398-6208
450 MISSION STREET (WALGREENS; NE CORNER)
C) JOHN VANECK @ 495-7900/495-8642
100 1ST STREET (SW CORNER)
PG&E REPRESENTATIVE
ED LEE @ 695-3516
- WORKING ON SUB SIDEWALK BASEMENT, THE CONTRACTOR SHALL CAREFULLY COREDRILL THROUGH BASEMENT RETAINING WALL TO BRING CONDUIT INTO BASEMENT PULL BOX. FILL THE GAP BETWEEN CONDUIT AND CORE DRILLED HOLE WITH NON-SHRINK GROUT. WATERPROOF SIDEWALK AND RETAINING WALL AROUND ALL PENETRATIONS IN THE BASEMENT AREA INCLUDING POLES, POLE FOUNDATIONS, CONTROLLER, PULL BOXES, AND CONDUITS, ETC.
- IN THE EVENT THAT THE INTERCONNECT CONDUIT IS NOT EXPOSED IN THE BASEMENT, THE CONTRACTOR TO INTERCEPT AND EXTEND THE INTERCONNECT CONDUIT TO THE NEW LOCATION AS SHOWN.

NOTE:

THIS AUTOCAD DRAWING HAS BEEN REVISED AND REPLOTED SUBSEQUENT TO INTERNAL ENGINEERING APPROVAL AND SIGN-OFF. FOR THOSE SIGNATURES, SEE THE DRAWING PLOTTED AND ISSUED PREVIOUSLY DURING BIDDING. THE SIGNED DRAWING REMAINS VALID EXCEPT FOR THE CHANGES ONLY AS CLEARLY MARKED ON THIS DRAWING AND ISSUED UNDER THIS LATEST REVISION NUMBER AS SHOWN IN THE TABLE OF REVISIONS LOCATED AT THE LOWER LEFT CORNER OF THE DRAWING. ALL ISSUED REVISIONS SUBSEQUENT TO PREVIOUSLY PLOTTED DRAWING DURING BIDDING REMAIN VALID UNLESS SUPERSEDED BY LATER ISSUED REVISIONS. CHECK ALL ISSUED REVISIONS OF THIS DRAWING.

DETAIL NOTES:

- A EX CONDUIT TO REMAIN.
- A1 EX CONDUIT AND WIRING. R/C EX WIRING. F/I NEW WIRING AS NOTED.
- A2 EX CONDUIT AND WIRING. R/C EX TS WIRING. SL WIRING TO REMAIN. F/I NEW WIRING AS NOTED.
- A3 EX CONDUIT AND WIRING. R/C EX TS WIRING. EX SL WIRING TO REMAIN.
- A4 R/C EX WIRING AND CONDUIT. REPAIR SIDEWALK TO MATCH EX.
- A5 EX CONDUIT AND WIRING. R/C EX WIRING. CUT CONDUIT FLUSH TO PULL BOX WALL OR 12" DEPTH, CAP OR DUCT SEAL END(S).
- A15 R/C EX TS WIRING. DLC AND/OR DLW TO REMAIN.
- B SPLICE NEW WIRING TO EX SL WIRING TO MAINTAIN SL CIRCUIT.
- B7 REPULL EX DLC FROM THE EX IC TO THE SELECTED SPLICE POINT. EXTEND/SPLICE AND TERMINATE TO THE NEW IC LOCATION.
- C2 INTERCEPT EX CONDUIT AND EXTEND TO NEW LOCATION AS SHOWN. F/I NEW WIRING AS SHOWN.
- 12 REPULL 12/C FROM THE EX IC TO THE NEAREST SPLICE POINT. SPLICE TO EX 12/C AND EXTEND TO NEW IC LOCATION.
- 13 REPULL 12/C FROM THE EX IC TO THE NEAREST SPLICE POINT. TERMINATE TO NEW IC LOCATION.
- 2 F/I IN-LINE FUSE HOLDER W/ 40A FUSE FOR IC SERVICE. F/I GROUND ROD.
- 13 CONTRACTOR SHALL COORDINATE WITH PG&E TO DISCONNECT EX SERVICE WIRING. R/C EX CONDUIT AND WIRING. RESTORE SIDEWALK AND/OR PAVEMENT TO MATCH EX.
- S SEE APPLICABLE BASEMENT FOUNDATION ON DWG S-1.

BUREAU OF ENGINEERING
DEPARTMENT OF PUBLIC WORKS
CITY AND COUNTY OF SAN FRANCISCO

DESIGNED: DATE:
DSB/DVS 1/01
DRAWN: DATE:
JS DSB/WL 1/01
CHECKED: DATE:
SL/BW 1/01

APPROVED
SECTION MANAGER DATE:
DIVISION MANAGER DATE:
CITY ENGINEER DATE:

SCALE:
1"=10'-0"
SHEET OF SHEETS
11 OF 39

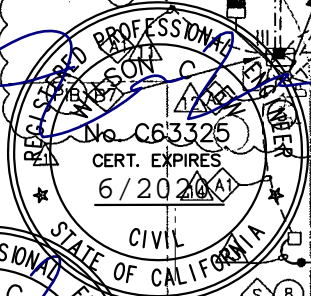
SOMA MISSION STREET
TRAFFIC SIGNAL UPGRADE

1ST STREET AND MISSION ST

SPECIFICATION NO.
1663NR
DRAWING NO.
E-4.0
FILE NO.
75,568
REV. NO.
1

REFERENCE INFORMATION
& FILE NO. OF SURVEYS

action layout 2/1/02 DSB BC
ON BY APP.
REVISIONS
IF YOU HAVE LATEST REVISION



EXTERNAL REFERENCES: S:\E\1663NR\1663NR.dwg
FONTS USED: ROMANS.SHB ROMANS.SHB ROMANS.SHB
SCALE FACTOR: 10
PLOT SCALE: 1"=1'
ORIGIN: ELECTRICAL
FILE NAME: R1663NR-E-4.0.dwg
DATE: Nov 30 2000 09:47

CONDUIT AND WIRING SCHEDULE																								
CONDUIT RUN NUMBER	1	2	3	4	5	6	7	8	9	10	11	12	13	14	15	16	17	18	19	20	21	22		
CONDUIT SIZE (INCH)	2	EX	EX	2	EX	EX	2	EX	3	2	EX	EX	2	EX	2	3	2	2	2	2	EX	1.5		
NOTES																								
#14 WIRES																								
SIGNAL 68	2	2			2				2															
SIGNAL 61	3	3			3				3															
SIGNAL 49	2	2			2				2															
SIGNAL 64	3	3			3				3															
SIGNAL 69			2			2			2															
SIGNAL 88				2		2			2															
SIGNAL 22				3		3			3															
SIGNAL 28							2		2															
SIGNAL 21							3		3															
SIGNAL 24							3		3															
SIGNAL 42								3	3															
SIGNAL 89							2	2																
SIGNAL 48																								
SIGNAL 62																								
SIGNAL 41																								
SIGNAL 29																								
SIGNAL 44																								
#14 WIRES (NEUTRAL)	4		1	2		3	2			2	2	1				3	3							
#14 WIRES (SPARE)		3			3				3															
TOTAL #14 WIRES	14	13	3	7	13	7	11	7	33	7	7	4	3	16	16									
#10 WIRES (NEUTRAL)		1			1	1			3					1	1	1								
#8 WIRES (120V SERVICE)																								
#6 BSCW									1	1				1										
#10 WIRES (ST. LIGHT)	2					2																		
12/C INTERCONNECT		2				2			2															
1/4" PULL ROPE																								

NOTE:
THIS AUTOCAD DRAWING HAS BEEN REVISED AND REPLOTED SUBSEQUENT TO INTERNAL ENGINEERING APPROVAL AND SIGN-OFF. FOR THOSE SIGNATURES, SEE THE DRAWING PLOTTED AND ISSUED PREVIOUSLY DURING BIDDING. THE SIGNED DRAWING REMAINS VALID EXCEPT FOR THE CHANGES ONLY AS CLEARLY MARKED ON THIS DRAWING AND ISSUED UNDER THIS LATEST REVISION NUMBER AS SHOWN IN THE TABLE OF REVISIONS LOCATED AT THE LOWER LEFT CORNER OF THE DRAWING. ALL ISSUED REVISIONS SUBSEQUENT TO PREVIOUSLY PLOTTED DRAWING DURING BIDDING REMAIN VALID UNLESS SUPERSEDED BY LATER ISSUED REVISIONS. CHECK ALL ISSUED REVISIONS OF THIS DRAWING.



BUREAU OF ENGINEERING
DEPARTMENT OF PUBLIC WORKS
CITY AND COUNTY OF SAN FRANCISCO

POLE AND EQUIPMENT SCHEDULE									
POLE No.	TYPE OF POLE	LUMINAIRE (HPS)	VEHICLE SIGNAL			PEDESTRIAN SIGNAL			REMARKS
		VOLTAGE/WATTS	No.	TYPE	MOUNTING (F/I)	No.	TYPE	MOUNTING (F/I)	
①	EX MUNI					69	1S-IN	SP-1	
②	1-A (10')		22	3S8"	TV-1	88	1S-IN	SP-1	BASEMENT
③	17-1-70 WITH 8' MAST ARM AND 6' LUMINAIRE ARM 17-2-100 8'MA, 6'LA	208/200 B2	24 21	3S12" 3S8"	MAS SV-1-T	28	1S-IN	SP-1	BACKPLATE
④	EX MUNI		42	3S12"	SV-1-T	89	1S-IN	SP-1	PROTECT EX CAMERA EQUIPMENT AND WIRING APS
⑤	EX MUNI		41	3S12"	SV-1-T	48	1S-IN	SP-1	
⑥	EX MUNI		62	3S8"	SV-1-T	29	1S-IN	SP-1	FEEDER POLE
⑦	17-1-70 WITH 8' MAST ARM AND 6' LUMINAIRE ARM	208/200 B2	64 61	3S12" 3S8"	MAS SV-1-T	49 68	1S-IN 1S-IN	SP-1-SF(12") SP-1(22")	BACKPLATE BASEMENT
⑧	16-1-70 WITH 8' MAST ARM		44	3S12"	MAS (END)				BACKPLATE BASEMENT
⑨	PPB								APS

DETAIL NOTES:
B2 F/I WITH INTEGRAL BALLAST AND PHOTOELECTRIC CONTROL. F/I FUSE AND FUSE HOLDERS PER SPDWSF FILE #49,092.
P POLYVINYL CHLORIDE (PVC) CONDUIT SCHEDULE 80.

As-Built
Sales Force
Phoenix Electric
9/25/19

REFERENCE INFORMATION & FILE NO. OF SURVEYS		BUREAU OF ENGINEERING DEPARTMENT OF PUBLIC WORKS CITY AND COUNTY OF SAN FRANCISCO		DESIGNED: DATE:	APPROVED:	SCALE:	SOMA MISSION STREET TRAFFIC SIGNAL UPGRADE FIRST ST AND MISSION ST TRAFFIC SIGNAL WORKS (SCHEDULES)	SPECIFICATION NO. 1663NR
3/02	Pco#3, revised during construction layout 2/1/02			DSB/DVS 1/01	SECTION MANAGER DATE:	NONE		DRAWING NO. E-4.1
NO.	DATE			DRAWN: DATE:	DIVISION MANAGER DATE:	SHEET OF SHEETS		FILE NO. 75,569
TABLE OF REVISIONS				CHECKED: DATE:	CITY ENGINEER DATE:	12 OF 39	REV. NO. 1	
CHECK WITH TRACING TO SEE IF YOU HAVE LATEST REVISION				SL/BW 1/01				

EXTERNAL REFERENCES: S:\E\1663NR\163422.dwg
FONTS USED: ROMANS.SHR ROMANS.SHR ROMANT.DX
SCALE FACTOR: 10
PLOT SCALE: 1"=1'
ORIGIN: ELECTRICAL
FILE NAME: R1663NR-E-4.1.dwg
DATE: Nov 30 2000 16:23