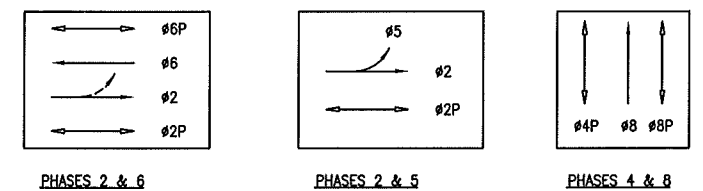


DETAIL NOTES:

- A EX CONDUIT AND WIRING. R/C EX WIRING. CUT CONDUIT FLUSH TO PULLBOX WALL OR 12" DEPTH. CAP CONDUIT ENDS.
- A1 EX CONDUIT AND WIRING. R/C EX WIRING. F/I WIRING AS NOTED.
- A2 EX CONDUIT AND WIRING. SL WIRING TO REMAIN. R/C EX TS WIRING. F/I WIRING AS NOTED.
- A4 R/C EX WIRING AND CONDUIT. REPAIR SIDEWALK TO MATCH EX.
- A9 MODIFY HEIGHT OF EX CONDUIT IN PULL BOX.
- F1 F/I NEW EXTERNAL CONDUIT FOR SIGNAL(S). SURFACE MOUNTED CONDUIT SHALL BE INSTALLED ON POLE FACE OPPOSITE OF ROADWAY. SEE EXTERNAL CONDUIT INSTALLATION DETAIL.
- H DTIS SHALL RELOCATE FIRE/POLICE ALARM PULL STATION. CONTRACTOR SHALL COORDINATE WITH JACK DONOHOE OF DTIS (TEL # 415-550-2724) 10 DAYS BEFORE COMMENCEMENT OF WORK AT THE CORNER.
- I1 PULL 12/C BACK INTO PULL BOX FROM EX IC. REPULL TO NEW IC LOCATION.
- I2 EXTEND SERVICE WIRES TO NEW IC LOCATION.
- J R/C EX CURB RAMP, RESTORE CURB AND SIDEWALK.
- K DIG OUT AND LOWER EX CONDUITS TO ACCOMMODATE RAMP, INCIDENTAL WORK TO PULL BOX BID ITEM.

PHASE DIAGRAM:



PHASE SEQUENCE:

G	Y	R	WB TOWNSEND ST.
G	Y	R	EB TOWNSEND ST.
OFF	OFF	OFF	EB TOWNSEND ST LT
R	G	Y R	3RD STREET
WM	FRH	RH	PED XING 3RD STREET SOUTH SIDE
WM	FRH	RH	PED XING 3RD STREET NORTH SIDE
RH	WM	FRH RH	PED XING TOWNSEND

NOTE:

THIS AUTOCAD DRAWING HAS BEEN REVISED AND REPLOTTED SUBSEQUENT TO INTERNAL ENGINEERING APPROVAL AND SIGN-OFF. FOR THOSE SIGNATURES, SEE THE DRAWING PLOTTED AND ISSUED PREVIOUSLY DURING BIDDING. THE SIGNED DRAWING REMAINS VALID EXCEPT FOR THE CHANGES ONLY AS CLEARLY MARKED ON THIS DRAWING AND ISSUED UNDER THIS LATEST REVISION NUMBER AS SHOWN IN THE TABLE OF REVISIONS LOCATED AT THE LOWER LEFT CORNER OF THE DRAWING. ALL ISSUED REVISIONS SUBSEQUENT TO PREVIOUSLY PLOTTED DRAWING DURING BIDDING REMAIN VALID UNLESS SUPERSEDED BY LATER ISSUED REVISIONS. CHECK ALL ISSUED REVISIONS OF THIS DRAWING.

Field survey on 8/16/04

5/04 AS-BUILT 7/2001 REVISE POLE #6 (PCO #3) 1/2001 REVISE PULLBOXES & CONDUIT (PCO #1)	WN SL JP SL LS SL BY APP.	REFERENCE INFORMATION & FILE NO. OF SURVEYS 	BUREAU OF ENGINEERING DEPARTMENT OF PUBLIC WORKS CITY AND COUNTY OF SAN FRANCISCO		DESIGNED: DATE: NO/BW 7/00 DRAWN: DATE: JS KS/CXL 7/00 CHECKED: DATE: NO/D'OK 7/00	APPROVED SECTION MANAGER DATE: DIVISION MANAGER DATE: CITY ENGINEER DATE:	SCALE: 1"=10'-0" SHEET OF SHEETS	BRANNAN AND TOWNSEND STREETS TRAFFIC SIGNALS UPGRADE 3rd ST AND TOWNSEND ST	SPECIFICATION NO. 1989N DRAWING NO. E-23 FILE NO. 74,718 REV. NO. 2
---	------------------------------------	---	--	--	--	--	-------------------------------------	--	--

EXTERNAL REFERENCES: 1034x22.dwg
 FONT USED: ROMANS.SHX ROMANS.SHX ROMANS.SHX ROMANS.SHX ROMANS.SHX ROMANS.SHX ROMANS.SHX ROMANS.SHX ROMANS.SHX ROMANS.SHX
 SCALE FACTOR: 10
 PLOT SCALE: 1"=1'
 ORIGIN: ELECTRICAL
 FILE NAME: E-22.dwg
 DATE: Apr 19 2000 11:55

