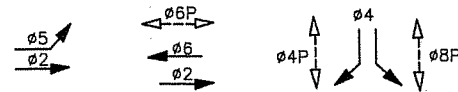


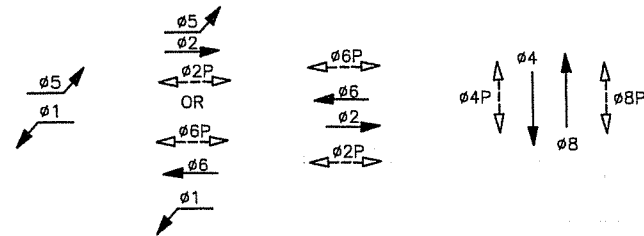
APPLICABLE CITY AND COUNTY OF SAN FRANCISCO  
DEPARTMENT OF PUBLIC WORKS STANDARD PLANS/DRAWINGS

FILE 87,201, FILE 87,202, FILE 87,203, FILE 87,204,  
FILE No. STR-7025

EXISTING PHASE DIAGRAM

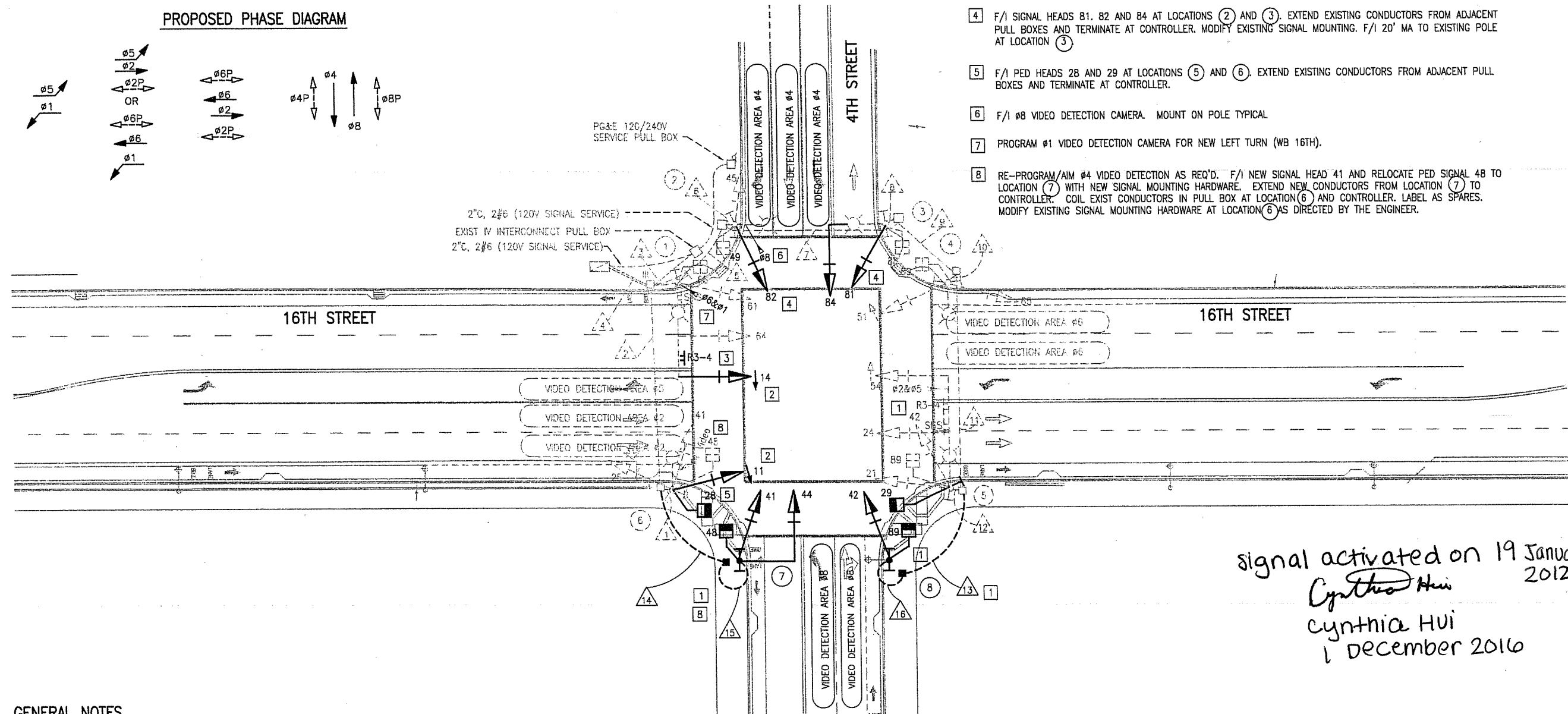


PROPOSED PHASE DIAGRAM



PROJECT NOTES

- 1 F/I 02 PPB AT LOCATIONS 7 AND 8. EXTEND NEW CONDUIT RUNS 13 AND 14 AND EXTEND EXISTING CONDUCTORS FROM LOCATIONS 5 AND 6. TERMINATE AT CONTROLLER. F/I 20' MA AT LOCATION 7 WITH NEW SIGNAL HEAD 44. RELOCATE SIGNAL HEAD 42 AND PED HEAD 89 FROM LOCATION 5 TO LOCATION 8. EXTEND NEW CONDUCTORS TO CONTROLLER. COIL EXIST SIGNAL 42 AND 89 CONDUCTORS AS SPARES IN PULL BOX AT LOCATION 5 AND BASE OF CONTROLLER.
- 2 CONVERT EXIST SIGNAL HEAD 41 TO 11 LA AT LOCATION 6. RETERMINATE WIRING AT CONTROLLER AS REQ'D AT LOCATION 6. F/I SIGNAL HEAD 14 AT LOCATION 1. EXTEND EXISTING CONDUCTORS FROM ADJACENT PULL BOXES AND TERMINATE AT CONTROLLER. MODIFY SIGNAL MOUNTING HARDWARE AS REQ'D.
- 3 F/I R3-4 SIGN ON MAST ARM AT LOCATION 1.
- 4 F/I SIGNAL HEADS 81, 82 AND 84 AT LOCATIONS 2 AND 3. EXTEND EXISTING CONDUCTORS FROM ADJACENT PULL BOXES AND TERMINATE AT CONTROLLER. MODIFY EXISTING SIGNAL MOUNTING. F/I 20' MA TO EXISTING POLE AT LOCATION 3.
- 5 F/I PED HEADS 28 AND 29 AT LOCATIONS 5 AND 6. EXTEND EXISTING CONDUCTORS FROM ADJACENT PULL BOXES AND TERMINATE AT CONTROLLER.
- 6 F/I 08 VIDEO DETECTION CAMERA. MOUNT ON POLE TYPICAL.
- 7 PROGRAM 01 VIDEO DETECTION CAMERA FOR NEW LEFT TURN (WB 16TH).
- 8 RE-PROGRAM/AM 04 VIDEO DETECTION AS REQ'D. F/I NEW SIGNAL HEAD 41 AND RELOCATE PED SIGNAL 48 TO LOCATION 7 WITH NEW SIGNAL MOUNTING HARDWARE. EXTEND NEW CONDUCTORS FROM LOCATION 7 TO CONTROLLER. COIL EXIST CONDUCTORS IN PULL BOX AT LOCATION 6 AND CONTROLLER. LABEL AS SPARES. MODIFY EXISTING SIGNAL MOUNTING HARDWARE AT LOCATION 6 AS DIRECTED BY THE ENGINEER.



signal activated on 19 January 2012  
Cynthia Hui  
cynthia hui  
1 december 2016

GENERAL NOTES

1. PRIOR TO INSTALLATION OF EITHER FOUNDATIONS OR SIGNAL POLES, THE CONTRACTOR SHALL COORDINATE WITH THE ENGINEER REGARDING EXACT EQUIPMENT LOCATIONS. 24 HOUR NOTIFICATION SHALL BE PROVIDED TO THE CITY.
2. CONDUCTOR AND EQUIPMENT SCHEDULES ARE FURNISHED AS INSTALLED GUIDELINES ONLY. IT IS THE RESPONSIBILITY OF THE CONTRACTOR TO PROVIDE THE CORRECT EQUIPMENT FOR THE INTENDED OPERATION.
3. TRAFFIC SIGNAL PULL BOXES SHALL BE CCSF TYPE II UNLESS OTHERWISE NOTED.
4. POLES, PULL BOXES, AND DETECTORS, SHALL BE LOCATED IN THE PRESENCE OF THE ENGINEER. LOCATION SHALL BE APPROVED BY THE ENGINEER PRIOR TO EXCAVATION.
5. POLES SHALL BE LOCATED 30 INCHES FROM THE FACE OF CURB, AND MINIMUM 48 INCHES CLEARANCE FOR WHEELCHAIR ACCESS AND PEDESTRIAN ACCESS.
6. ALL SIGNAL HEADS SHALL HAVE BACKPLATES.
7. TRENCHING METHODS SHALL BE DONE IN ACCORDANCE WITH LATEST CITY REQUIREMENTS AND LATEST EXCAVATION CODE INCLUDING "T" TRENCHING AND 24-HOUR RESTORATION.
8. THE CONTRACTOR SHALL POSSESS A CLASS "C10" LICENSE AT THE TIME THE CONTRACT IS AWARDED TO PERFORM THE ELECTRICAL WORK.
9. IT SHALL BE THE RESPONSIBILITY OF THE CONTRACTOR TO VERIFY THE EXACT LOCATIONS AND DEPTHS OF ALL EXISTING UTILITIES WITH THE UTILITY PROVIDER BEFORE EXCAVATION. CALL UNDERGROUND SERVICE ALERT (U.S.A.) 48 HOURS PRIOR TO EXCAVATION AT 1-800-227-2600.
9. IT SHALL BE THE RESPONSIBILITY OF THE CONTRACTOR TO MAINTAIN THE EXISTING SIGNAL SYSTEM AS FULLY OPERATIONAL AT ALL TIMES EXCEPT UTILITY PROVIDER BEFORE EXCAVATION. CALL UNDERGROUND SERVICE ALERT (U.S.A.) 48 HOURS PRIOR TO EXCAVATION AT 1-800-227-2600.
10. IT SHALL BE THE RESPONSIBILITY OF THE CONTRACTOR TO MAINTAIN THE EXISTING SIGNAL SYSTEM AS FULLY OPERATIONAL AT ALL TIMES EXCEPT WHEN CUTTING OVER AT THE CONTROLLER IN ACCORDANCE WITH THE PROJECT SPECIFICATIONS. THE CONTRACTOR SHALL PROVIDE NEW SIGNAL AND/OR PUSH BUTTONS WHEN RELOCATING EQUIPMENT AS NEEDED TO MAINTAIN THE SYSTEM OPERATIONAL AND FULLY FUNCTIONAL DURING CONSTRUCTION.

THIS PLAN ACCURATE FOR ELECTRICAL WORK ONLY

1"=20' 20' 0' 20' 40'

MISSION BAY PROJECT - SAN FRANCISCO, CA BLOCKS 36-39 & X3 EXCAVATION PERMIT - PHASE 2 4TH ST. & 16TH ST. SIGNAL PLAN		DATE: 07/29/11 BY: [Signature] CHECKED: [Signature] APPROVED: [Signature]	
T3.1		REVISIONS	
03340.09.016		DATE: 07/29/11 BY: [Signature] CHECKED: [Signature] APPROVED: [Signature]	
SHEET 118 OF 128		DATE: 07/29/11 BY: [Signature] CHECKED: [Signature] APPROVED: [Signature]	
T3.1		DATE: 07/29/11 BY: [Signature] CHECKED: [Signature] APPROVED: [Signature]	

[illegible][illegible][illegible]