

DATE : 6-94

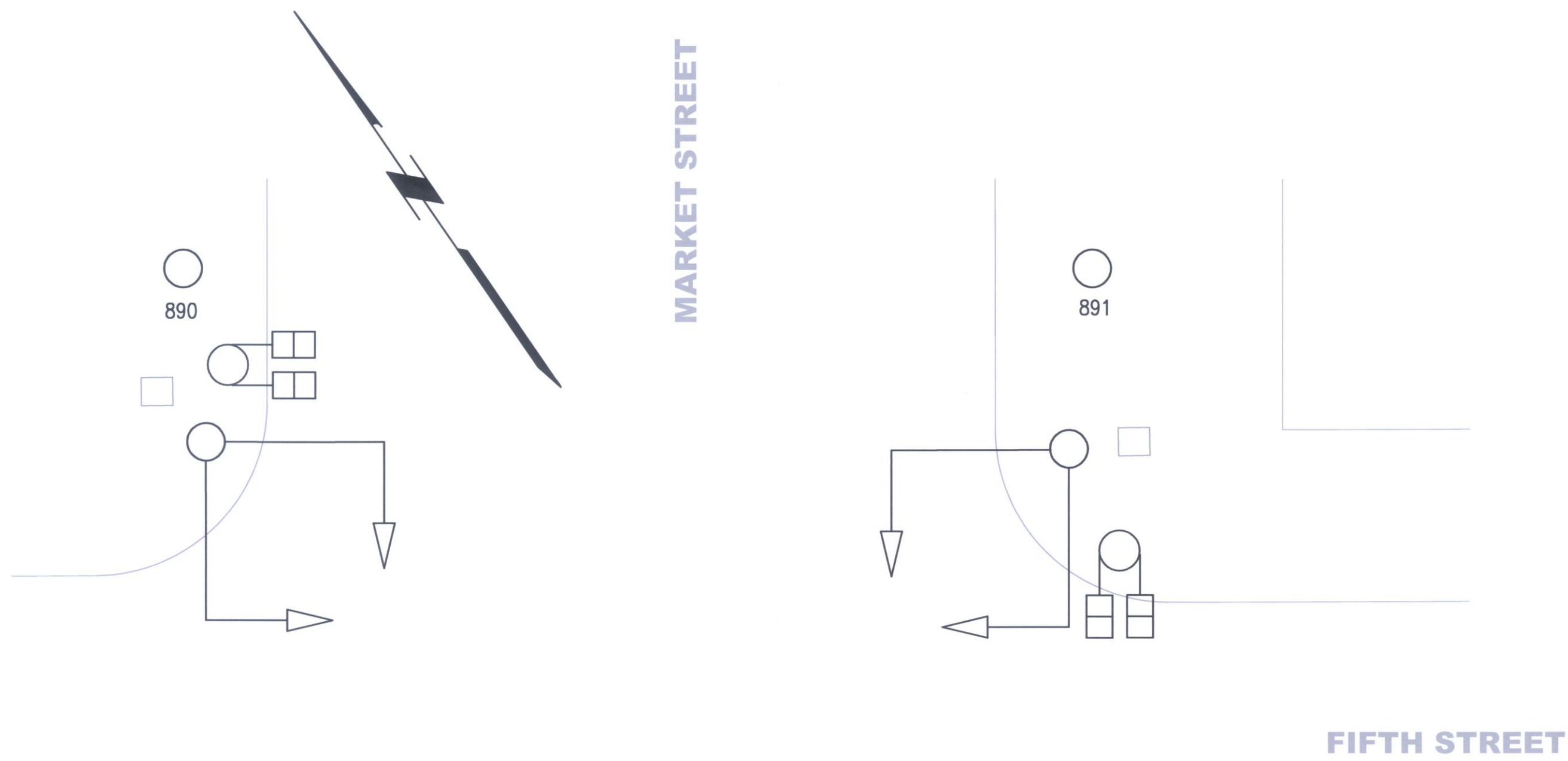
POLE	FUNC.	MAT'L	SIGNAL NO.	MAKE	NO. OF SECT.	SIZE	VISOR	B.P. OR LOUVERS	MOUN'T	PED SIGNAL NO.	LEGEND	MESSAGE		MAKE	MOU
												ELEMENT	COLOR		
A	S	S	82	—	3	8"	FC 8"	BP	*	49	I	IS-I	W/OR	ICC	T
B	M	S	61	—	3	8"	FC 8"	BP	*	48	I	IS-I	W/OR	ICC	T
C	S	S	62	—	3	8"	FC 8"	BP	*	29	I	IS-I	W/OR	ICC	T
D	S	S	41	—	3	8"	FC 8"	BP	*	28	I	IS-I	W/OR	ICC	T
E	M	S	42	—	3	8"	FC 8"	BP	*	89	I	IS-I	W/OR	ICC	T
F	S	S	21	—	3	8"	FC 8"	BP	*	88	I	IS-I	W/OR	ICC	T
G	S	S	22	—	3	8"	FC 8"	BP	*	69	I	IS-I	W/OR	ICC	T
H	S	S	81	—	3	8"	FC 8"	BP	*	68	I	IS-I	W/OR	ICC	T
I	S	S													
J	S	S													
K	S	S													
L	S	S													

CONTROLLER CABINET SIZE : EAGLE + ECON. BASE CABINET : 2-YES
ORDINARY 1-NO

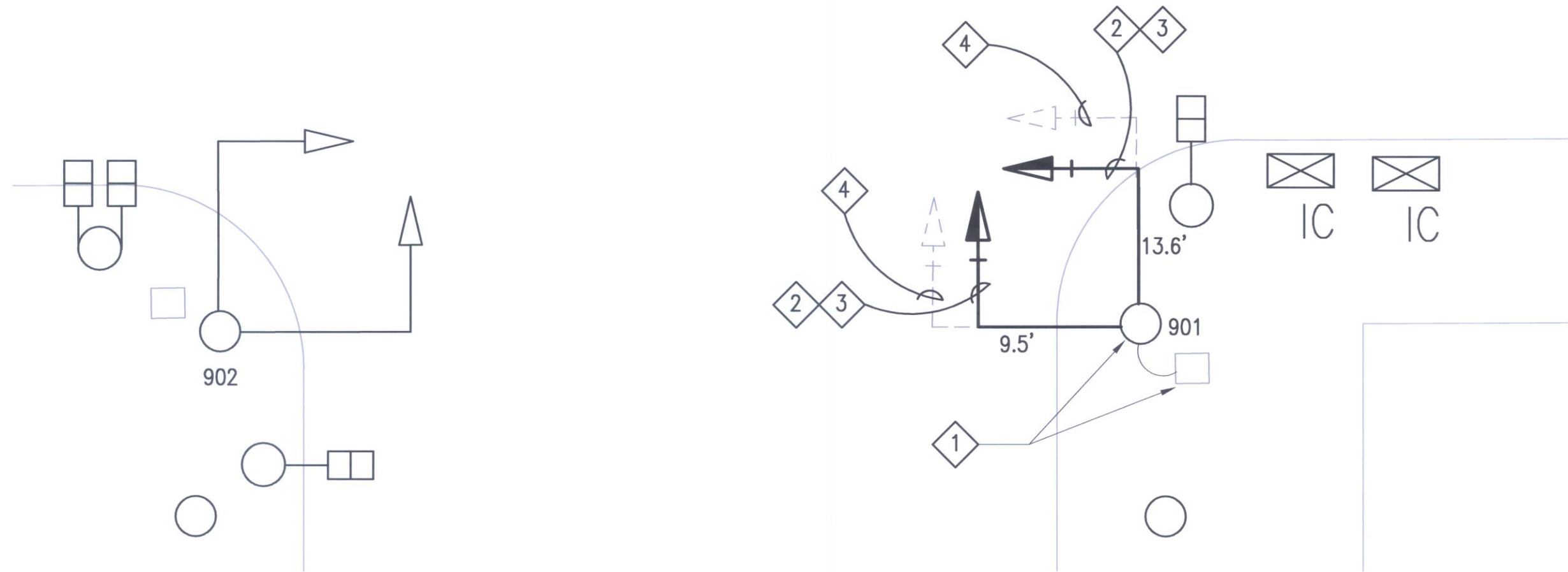
COMMENTS : * MARKET STREET. MASTARM SIGNALS

1	M/L	O
2	M/L	O
3	M/L	O
4	M/L	O

POLES B & E WERE CHANGED TO MUNI POLES
 UNDER MR 881, #31 BALBOA LINE CONTRACT



- NOTES:**
1. PULL (E) WIRES FROM (E) SIGNAL HEADS TO (E) PULL BOX; REPULL AND RECONNECT WIRING TO (N) SIGNAL HEADS AFTER MODIFICATION OF CANTILEVER MAST ARMS IS COMPLETED.
 2. F/I TRAFFIC SIGNAL MAST ARM (LENGTH AS INDICATED), DISC, 12"Ø SIGNAL HEADS, VISORS, AND SIGN FRAME METAL PANELS TO MATCH (E) DESIGN. SEE REFERENCE DRAWINGS TS-2.1 AND TS-2.2. CONTRACTOR SHALL PAINT (N) EQUIPMENT TO MATCH (E) PAINT.
 3. CONTRACTOR TO VERIFY AND MAINTAIN 3 FEET CLEARANCE BETWEEN (N) SIGNAL HEADS AND (N) TROLLEYWIRE.
 4. DISCONNECT (E) WIRES TO (E) TRAFFIC SIGNAL DEVICES.



TRAFFIC SIGNAL
PLAN


10' 0 10' 20'

SCALE = 1"=10'

AS BUILT	
CONTRACTOR <i>[Signature]</i>	DATE 4-26-13
RESIDENT ENGINEER <i>[Signature]</i>	DATE 4/25/13
DESIGNER	DATE

AB

FOR ORIGINAL SIGNATURES, SEE CL-17844, REV 0

						SFMTA	DESIGNED W. SENG/A. HERCE DRAWN W. SENG CHECKED S. PONG REVIEWED M. CHAN RECOMMENDED M. FOWLER APPROVED R. EDWARD DATE 07/08/2010	REV. 0 SEALED BY W. SENG/ A. HERCE		CITY AND COUNTY OF SAN FRANCISCO MUNICIPAL TRANSPORTATION AGENCY APPROVED CARTER R. ROHAN FOR EXECUTIVE DIRECTOR/CEO	THIRD STREET LIGHT RAIL PROGRAM PHASE 2 – CENTRAL SUBWAY UNION SQUARE/MARKET STREET STATION UTILITIES RELOCATION		CONTRACT NO. 1251
02/28/2013	AS BUILT										TRAFFIC SIGNALS TEMPORARY TROLLEY RE-ROUTE FIFTH STREET AND MARKET STREET		SFMTA CONTROL NO. CL-17844
07/08/2010	ISSUED FOR BID										DRAWING NO. ET-103	REVISION AB	SHEET NO. 157