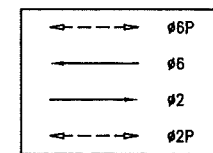
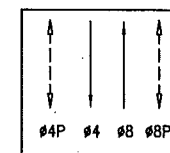


PHASE DIAGRAM:



PHASES 2 & 6



PHASES 4 & 8

PHASE SEQUENCE:

G	Y	R	MISSION ST.
R		G	5TH STREET
WM	FRH	RH	PED XING 5TH STREET
RH		WM	PED XING MISSION

Shutdown - 10/28/03 9:07 AM  
Flash - 10/28/03 9:14 AM  
7-color - 10/28/03 9:17 AM

SHEET NOTES:

- FOR BASEMENT ACCESS, PLEASE CONTACT,  
A) LARRY CLAVO/DAVE MITCHELL @ 777-8775  
100 5TH MISSION STREET (CHRONICLE BLDG; SW CORNER)
- WORKING ON SUB SIDEWALK BASEMENT, THE CONTRACTOR SHALL CAREFULLY COREDRILL THROUGH BASEMENT RETAINING WALL TO BRING CONDUIT INTO BASEMENT PULL BOX. FILL THE GAP BETWEEN CONDUIT AND CORE DRILLED HOLE WITH NON-SHRINK GROUT. WATERPROOF SIDEWALK AND RETAINING WALL AROUND ALL PENETRATIONS IN THE BASEMENT AREA INCLUDING POLES, POLE FOUNDATIONS, PULL BOXES, AND CONDUIT, ETC.
- IN THE EVENT THAT THE INTERCONNECT CONDUIT IS NOT EXPOSED IN THE BASEMENT, THE CONTRACTOR TO INTERCEPT AND EXTEND THE INTERCONNECT CONDUIT TO THE NEW LOCATION AS SHOWN.

DETAIL NOTES:

- A2 EX CONDUIT AND WIRING. R/C EX TS WIRING. SL WIRING TO REMAIN. F/I NEW WIRING AS NOTED.
- A4 R/C EX WIRING AND CONDUIT. REPAIR SIDEWALK TO MATCH EX.
- A5 EX CONDUIT AND WIRING. R/C EX WIRING. CUT CONDUIT FLUSH TO PULL BOX WALL OR 12" DEPTH, CAP OR DUCT SEAL END(S).
- A8 EX CONDUIT AND WIRING. R/C EX TS WIRING. SL WIRING AND CAMERA LOOP CABLE TO REMAIN.
- A22 PROTECT EX CONDUIT AND WIRING FOR THE RED LIGHT CAMERA. EXTEND CAMERA PHASE AND POWER CABLE TO THE NEW IC LOCATION. SPLICE CONNECTION.
- A23 EXTEND AND TERMINATE CAMERA SERVICE AND PHASE CABLE TO NEW IC LOCATION AS SHOWN.
- B SPLICE NEW WIRING TO EX SL WIRING TO MAINTAIN SL CIRCUIT. INTERCEPT EX CONDUIT AND EXTEND TO NEW LOCATION AS SHOWN. WITHDRAW ANY EX WIRING TO NEAREST SPLICE POINT. F/I NEW WIRING TO MATCH EX WIRING AFTER CONDUIT MODIFICATION. SPLICE CONNECTIONS. F/I NEW WIRING AS SHOWN.
- D3 REMOVE EX MUNI FOUNDATION DOWN TO 5 FEET AND START NEW FOUNDATION FOR THE NEW POLE.
- E R/C EX PULL BOX. REPAIR ISLAND TO MATCH EX.
- EB ADJUST PULL BOX TO GRADE AND LOWER CONDUITS AS NECESSARY.
- F3 VEHICLE AND/OR PEDESTRIAN SIGNALS SHALL USE NEW EXTERNAL CONDUIT. SURFACE MOUNTED CONDUIT SHALL BE INSTALLED ON THE SIDE OPPOSITE THE ROADWAY OR INTERSECTION. SL WIRING SHALL USE THE SAME EXTERNAL CONDUIT.
- H DTIS SHALL RELOCATE FIRE/POLICE ALARM PULL STATION. CONTRACTOR SHALL COORDINATE WITH JACK DONOHUE OF DTIS (TEL. #415-558-2784) 10 DAYS BEFORE COMMENCEMENT OF WORK AT THE CORNER.
- I EXTEND 12/C INTERCONNECT TO NEW IC LOCATION. SPLICE TO EX 12/C TO MAINTAIN INTERCONNECT SYSTEM.
- J2 REMOVE AND REINSTALL EX GUARD POSTS.
- L2 F/I IN-LINE FUSE HOLDER W/ 40A FUSE FOR IC SERVICE. F/I GROUND ROD.
- L3 CONTRACTOR SHALL COORDINATE WITH PG&E TO DISCONNECT EX SERVICE WIRING. R/C EX CONDUIT AND WIRING. RESTORE SIDEWALK AND/OR PAVEMENT TO MATCH EX.
- S SEE APPLICABLE BASEMENT FOUNDATION ON DWG. S-1.
- X4 STUB OUT AND CAP 3' FROM THE IC FOUNDATION.
- Y COORDINATE THE REMOVAL AND REINSTALLATION OF AUXILIARY FLASH UNIT AND EXTENSION OF CAMERA PHASE AND POWER CABLE AND ANY OTHER RED LIGHT CAMERA WORKS WITH DAVID VALLE-SCHWENK OF DPT AT 554-2366.

NO.	DATE	DESCRIPTION	BY	APP.
TABLE OF REVISIONS				
CHECK WITH TRACING TO SEE IF YOU HAVE LATEST REVISION				

REFERENCE INFORMATION  
& FILE NO. OF SURVEYS

BUREAU OF ENGINEERING  
DEPARTMENT OF PUBLIC WORKS  
CITY AND COUNTY OF SAN FRANCISCO

DESIGNED: DATE:  
DSB/WL 1/01  
DRAWN: DATE:  
JS DSB/WL 1/01  
CHECKED: DATE:  
SL/BW 1/01

APPROVED  
SECTION MANAGER DATE:  
DIVISION MANAGER DATE:  
CITY ENGINEER DATE:

SCALE:  
1"=10'-0"  
SHEET OF SHEETS  
21 OF 39

SOMA MISSION STREET  
TRAFFIC SIGNAL UPGRADE

5TH STREET AND MISSION ST

SPECIFICATION NO.  
1663N  
DRAWING NO.  
E-9.0  
FILE NO.  
75,578  
REV. NO.  
0







NOTES:

- PULL (E) WIRES FROM (E) SIGNAL AND PEDESTRIAN HEADS TO (E) PULL BOX; REPULL AND RECONNECT WIRING TO (N) SIGNAL AND PEDESTRIAN HEADS AFTER (N) MAST ARM INSTALLATION IS COMPLETED.
- CONTRACTOR WORK IN THIS TABLE IN BOLD.
- F/I 2" GRSC.
- PULL (E) WIRES FROM (E) SIGNAL HEAD TO (E) PULL BOX; REPULL AND RECONNECT WIRING TO (N) SIGNAL HEAD AFTER (N) TROLLEY POLE INSTALLATION IS COMPLETED.
- DISCONNECT (E) WIRES TO (E) TRAFFIC SIGNAL DEVICES PRIOR TO DEMO.

POLE AND EQUIPMENT SCHEDULE

POLE No.	TYPE OF POLE	VEHICLE SIGNAL					PEDESTRIAN SIGNAL			REMARKS
		No.	TYPE	MOUNTING	VISORS	LOUVERS	No.	TYPE	MOUNTING	
1	17-1-70 WITH 20' MAST ARM & 6' LUMINAIRE ARM	81	3S8"	SV-1-T			69	1S-IN		
		84	3S12"	MAS (END)			88	1S-IN		
2	TROLLEY	22	3S8"							
3	17-1-70 WITH 8' MAST ARM & 6' LUMINAIRE ARM	21	3S8"	SV-2-TA			28	1S-IN	SP-1	
		24	3S12"	MAC-SF			89	1S-IN	SP-1	
4	17-1-70 WITH 8' MAST ARM & 6' LUMINAIRE ARM	41	3S8"	SV-1-T			48	1S-IN	SP-1	R/D SIGNAL HEADS 41, 44 AND, PEDESTRIAN HEAD 48, 20' MAST ARM, AND RELATED ACCESSORIES. F/I 8' MAST ARM, SIGNAL HEADS 41, 44 AND RELATED ACCESSORIES.
		44	3S12"	MAS (END)						
		41	3S12"	SV-1-T						
		44	3S12"	MAS (END)						
5	1-A (10')	62	3S8"	TV-1			29	1S-IN	SP-1	
6	17-1-70 WITH 8' MAST ARM & 6' LUMINAIRE ARM	61	3S8"	SV-1-T			49	1S-IN	SP-1	R/D PEDESTRIAN HEAD 49 AND RELATED ACCESSORIES.
		64	3S12"	MAC-SF			68	1S-IN	SP-1	
7	1-A (10')	82	3S8"	TV-1-T						R/D SIGNAL HEAD 82, POLE, AND RELATED ACCESSORIES.
7N	(N) TROLLEY	82	3S12"	SV-1-T			49	1S-IN	SP-1	F/I SIGNAL HEAD 82 , PEDESTRIAN HEAD 49, AND RELATED ACCESSORIES.

AS BUILT

CONTRACTOR	DATE
RESIDENT ENGINEER	DATE
DESIGNER	DATE

FOR ORIGINAL SIGNATURES. SEE CL-17845, REV 0

SFMTA

DESIGNED:  
W. SENG/A. HERCE  
DRAWN:  
W. SENG  
CHECKED:  
S. PONG  
REVIEWED:  
M. CHAN  
RECOMMENDED:  
M. FOWLER  
APPROVED:  
R. EDWARD  
DATE:  
07/08/2010

REV. 0  
SEALED BY  
W. SENG/  
A. HERCE



CITY AND COUNTY OF SAN FRANCISCO  
MUNICIPAL TRANSPORTATION AGENCY

APPROVED  
CARTER R. ROHAN  
FOR  
EXECUTIVE DIRECTOR/CEO

THIRD STREET LIGHT RAIL PROGRAM  
PHASE 2 - CENTRAL SUBWAY  
UNION SQUARE/MARKET STREET STATION UTILITIES RELOCATION

TRAFFIC SIGNALS  
TEMPORARY TROLLEY RE-ROUTE  
FIFTH STREET AND MISSION STREET

CONTRACT NO.  
1251  
SFMTA CONTROL NO.  
CL-17845  
DRAWING NO.  
ET-104  
SHEET NO.  
158  
REVISION  
1

\\sv6nos003\m544.1\FinalDesign\Drawing-821\2-Civil\Traffic Signals\Sheet Files CP02\ M54422ET104\_AB.dwg  
wseng Fri Mar 01,2013 - 6:57 am TEMPORARY TROLLEY RE-ROUTE

1 11-09-20 SRC 2020-255: UPDATED MOUNTING FOR SIGNALS 24 AND 64 HYu MVelasco

DATE	DESCRIPTION	REV. NO.	BY	CHECKED	APPROVED
02/28/2013	AS BUILT	AB			
07/08/2010	ISSUED FOR BID	0			