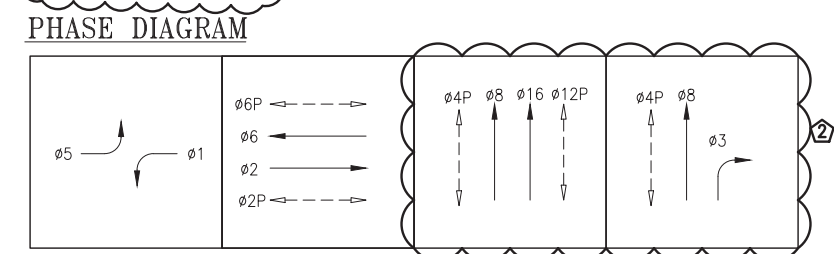


Switchover held 7/8/2020  
Dark @ 8:07 AM; 3-Color @ 10:47 AM  
J. Hornbostel & A. Uy (SSD); A. Begic (SFPW-ICM)  
P. Nguyen & D. Verhalen (Signal Shop)  
Note: APS to be installed at a later date.

**NRT MOUNT REPLACED WITH MAC PER 2021-275,**  
**J.HORNBOSTEL, 10/18/2021**

POLE AND EQUIPMENT SCHEDULE										
POLE No.	TYPE OF POLE	LUMINAIRE VOLTAGE/WATTAGE	VEHICLE SIGNAL					PEDESTRIAN SIGNAL		
			No.	TYPE	MOUNTING	VISORS	LOUVERS	No.	TYPE	REMARKS
①	24-4-100 WITH 35' MA AND 6' LA	A1 108 6	161 NRT 34 84	3S12" BIKE IS 24"X24" 3S12" RA 3S12"	SV-1-T -MAT- MAC MAS MAS	T T T		128	1S-COUNT SP-1	APS-4W BACKPLATE BACKPLATE
②	1-A (10')		52 65	3S12"LA 3S12"	TV-2-T	T T		69	1S-COUNT SP-1	APS-4W
③	NOT USED									
④	27-3-100 WITH 40' MA		21 24 54	3S12" 3S12" 3S12"LA	SV-1-T(20") MAS MAS	T T T		129 28	1S-COUNT 1S-COUNT SP-1-SF(12") SP-1(22")	MOUNT 21 @ 45" FROM CURB BACKPLATE BACKPLATE APS-4W
⑤	PPB POLE									APS-4W
⑥	17B-1-70 WITH 6' LA							48 29	1S-COUNT 1S-COUNT SP-1 SP-1	APS-4W x 2
⑦	1-A (10')		12 25	3S12"LA 3S12"	TV-2-T	T T				
⑧	19-3-100 WITH 30' MA AND 6' LA	A2 145 6	14 64 61	3S12"LA 3S12" 3S12"	MAS MAS SV-1-T	T T T		68	1S-COUNT SP-1	BACKPLATE BACKPLATE APS-4W
⑨	1-A (10')		82	3S12"	TV-1-T	T		49	1S-COUNT SP-1	APS-4W
⑩	25' CITY STANDARD STREET LIGHT	A1 108 6	35 165	3S12" RA 3S8" BIKE	SV-1-T SV-1	T T				MOUNT 35 @ 13' MOUNT 165 @ 8'

- SHEET NOTES:**
- ① ABANDON EXISTING CONDUIT AND WIRING, CUT EXISTING CONDUIT TO PULLBOX WALL AND CAP ENDS. PRIOR TO REMOVING OF EXISTING CABLES IN EXISTING CONDUIT, FIELD VERIFY AND MAINTAIN SERVICES TO STREETLIGHTS AND TRAFFIC CONTROLLER.
  - ② INSTALL CITY FURNISHED ONE SECTION LED PEDESTRIAN COUNTDOWN SIGNAL MODULE IN CONTRACTOR FURNISHED ONE SECTION PEDESTRIAN SIGNAL HOUSING
  - ③ CITY FORCES TO INSTALL CITY FURNISHED APS PUSH BUTTONS ON POLES AS SHOWN ON INTERSECTION DRAWING AND AS INDICATED IN POLE & EQUIPMENT SCHEDULE
  - ④ CITY FORCES TO RELOCATE PROXIM RADIO EQUIPMENT. FIFTEEN WORKING DAY NOTICE IS REQUIRED
  - ⑤ EXERCISE CAUTION TO AVOID CONFLICT WITH OVERHEAD UTILITY WIRES AT THIS INTERSECTION
  - ⑥ SEE LIGHTING FIXTURE SCHEDULE ON E-0.1
  - ⑦ SPLICE NEW STREET LIGHT TO EXISTING STREETLIGHT SERVICE, PROVIDE 10A FUSE AND FUSE HOLDER, MAINTAIN EXISTING STREET LIGHT CIRCUIT
  - ⑧ REPLACE EXISTING SIGNAL WITH NEW TRAFFIC SIGNALS AND RECONNECT TO EXISTING WIRING
  - ⑨ INTERCEPT (E) SL CONDUIT IN (E) STREETLIGHT POLE WITH A TYPE I PULL BOX. SPLICE IN PULL BOX (E) SL WIRES TO MAINTAIN SL CIRCUIT.
  - ⑩ RE-USE EXISTING WIRES FOR NEW SIGNALS 88 & 161. REMOVE EXISTING CONDUIT AND WIRING, CUT EXISTING CONDUIT TO PULL BOX WALL AND CAP ENDS. PRIOR TO REMOVING OF EXISTING CABLES IN EXISTING CONDUIT, FIELD VERIFY AND MAINTAIN SERVICES TO STREETLIGHTS AND TRAFFIC CONTROLLER.



NOTE; THIS AUTOCAD DRAWING HAS BEEN REVISED AND REPLOTED SUBSEQUENT TO INTERNAL ENGINEERING APPROVAL AND SIGN-OFF. FOR THOSE SIGNATURES, SEE THE DRAWING PLOTTED AND ISSUED PREVIOUSLY DURING BIDDING. THE SIGNED DRAWING REMAINS VALID EXCEPT FOR THE CHANGES ONLY AS CLEARLY MARKED ON THIS DRAWING AND ISSUED UNDER THIS LATEST REVISION NUMBER AS SHOWN IN THE TABLE OF REVISIONS LOCATED AT THE LOWER LEFT CORNER OF THE DRAWING. ALL ISSUED REVISIONS SUBSEQUENT TO PREVIOUSLY PLOTTED DRAWING DURING BIDDING REMAIN VALID UNLESS SUPERSEDED BY LATER ISSUED REVISIONS. CHECK ALL ISSUED REVISIONS OF THIS DRAWING.

CONDUIT AND WIRING SCHEDULE (FURNISH AND INSTALL CONDUIT AND WIRES) 2																												
CONDUIT RUN NUMBER		1	2	3	4	5	6	7	8	9	10	11	12	13	14	15	16	17	18	19	20	21	22	23	24	25	26	27
CONDUIT SIZE (INCH)		2	2	2	2	2	3	2		2	2	2	2	2	2	3	2	2	2	2	UNK	UNK	2	1	2	2	2	2
			EX	EX		GRS	EX	EX			EX	EX		EX	EX	EX	EX	EX	EX	EX	EX	EX	EX	SP		GRS	GRS	
NOTES																												
2 BIKE SIGNAL 161		(3)		(3)		(3)			N																			
VEHICLE SIGNAL 84		3		3			3	2	O																			
PED SIGNAL 128		(2)		(2)		(2)			T																			
VEHICLE SIGNAL 34		3		3			3																					
2 BLANKOUT NRT SIGN		1		1		1			U																			
VEHICLE SIGNAL 52			3	3			3		S																			
VEHICLE SIGNAL 65			(3)	(3)			(3)		E																			
PED SIGNAL 69			(2)	(2)			(2)		D																			
VEHICLE SIGNAL 82					3		3																					
PED SIGNAL 49					2		2																					
VEHICLE SIGNAL 14						3	3																					
VEHICLE SIGNAL 61						3	3																					
VEHICLE SIGNAL 64						3	3																					
PED SIGNAL 68					2	2																						
VEHICLE SIGNAL 24										3	3			3		3												
VEHICLE SIGNAL 54								3		3	3			3		3												
VEHICLE SIGNAL 21									(3)	(3)				(3)		(3)												
PED SIGNAL 28									(2)	(2)				(2)		(2)												
PED SIGNAL 129									(2)	(2)				(2)		(2)												
VEHICLE SIGNAL 35										3					3				3						3	3		
2 BIKE SIGNAL 165										3					3				3						3	3		
PED SIGNAL 29											(2)			(2)		(2)												
PED SIGNAL 48											(2)			(2)		(2)												
VEHICLE SIGNAL 12												3	3	3														
VEHICLE SIGNAL 25												3	3	3														
#14 NEUTRAL		[5]	(2)		2	4				[5]		(2)	1													2		
#14 SPARE				(3)			(3)			(3)				(3)		(3)										6	8	
TOTAL #14 WIRES		(17)	(10)	[23]	7	15	[39]			[18]	[22]	(6)	7	[26]		[32]	2											
#10 WIRES NEUTRAL		2		(1)	2		(2)	2		(1)	2			(2)		(2)												
#10 WIRES STREET LIGHT						2						(2)														2	2	
#8 WIRES STREET LIGHT																												
#8 WIRES (120 V SERVICE)															(2)		(2)						(2)				2	
#6 BSCW 1																		(1)	(1)	(2)	(1)	(1)						
INTERCONNECT 12C CABLE							(3)																					
SHEET NOTES:		1 F/I PER GROUNDING LAYOUT DETAIL AND PROJECT SPECIFICATIONS SECTION 34 41 13.																										
		2 (#) INDICATES EXISTING WIRE TO REMAIN, [2] INDICATES MIX OF NEW AND EXISTING WIRE																										
NOTE:		THIS AUTOCAD DRAWING HAS BEEN REVISED AND REPLOTTED SUBSEQUENT TO INTERNAL ENGINEERING APPROVAL AND SIGN-OFF. FOR THOSE SIGNATURES, SEE THE DRAWING PLOTTED AND ISSUED PREVIOUSLY DURING BIDDING. THE SIGNED DRAWING REMAINS VALID EXCEPT FOR THE CHANGES ONLY AS CLEARLY MARKED ON THIS DRAWING AND ISSUED UNDER THIS LATEST REVISION NUMBER AS SHOWN IN THE TABLE OF REVISIONS LOCATED AT THE LOWER LEFT CORNER OF THE DRAWING. ALL ISSUED REVISIONS SUBSEQUENT TO PREVIOUSLY PLOTTED DRAWING DURING BIDDING REMAIN VALID UNLESS SUPERSEDED BY LATER ISSUED REVISIONS. CHECK ALL ISSUED REVISIONS OF THIS DRAWING.																										
TABLE OF REVISIONS		REFERENCE INFORMATION & FILE NO. OF SURVEYS		DESIGN & ENGINEERING CITY & COUNTY OF SAN FRANCISCO SAN FRANCISCO PUBLIC WORKS 30 VAN NESS AVENUE, 5TH FLOOR SAN FRANCISCO, CA 94102 - 6028		Section Mgr: PHILIP THWIN Deputy Division Mgr: IQBALBHAI DHAPA Division Mgr: PATRICK RIVERA		Date: 5/2017 Date: 5/2017 Date: 5/2017		DESIGNED: JH/CMF DRAWN: JH/CMF CHECKED: GD/SL		DATE: 5/2017 DATE: 5/2017 DATE: 5/2017		SCALE: NONE SHEET OF SHEETS 10 OF 63		CONTRACT 34 - TRAFFIC SIGNAL MODIFICATIONS 7TH STREET AND BRANNAN STREET CONDUIT AND WIRING SCHEDULE		CONTRACT NO. 2805J DRAWING NO. E-1.1 FILE NO. 109,546 REV. NO. 2										