

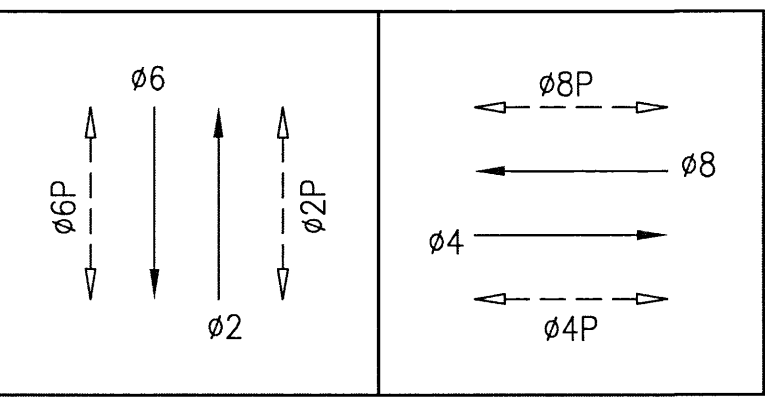
NOTE:
THIS AUTOCAD DRAWING HAS BEEN REVISED AND REPLOTTED
SUBSEQUENT TO INTERNAL ENGINEERING APPROVAL AND
SIGN-OFF. FOR THOSE SIGNATURES, SEE THE DRAWING
PLOTTED AND ISSUED PREVIOUSLY DURING BIDDING. THE
SIGNED DRAWING REMAINS VALID EXCEPT FOR THE CHANGES
ONLY AS CLEARLY MARKED ON THIS DRAWING AND ISSUED
UNDER THIS LATEST REVISION NUMBER AS SHOWN IN THE
TABLE OF REVISIONS LOCATED AT THE LOWER LEFT CORNER
OF THE DRAWING. ALL ISSUED REVISIONS SUBSEQUENT TO
PREVIOUSLY PLOTTED DRAWING DURING BIDDING REMAIN
VALID UNLESS SUPERSEDED BY LATER ISSUED REVISIONS.
CHECK ALL ISSUED REVISIONS OF THIS DRAWING.

POLE AND EQUIPMENT SCHEDULE											
POLE No.	TYPE OF POLE	LUMINAIRE VOLTAGE/ WATTAGE	VEHICLE SIGNAL				PEDESTRIAN SIGNAL			REMARKS	ITS DEVICE
			No.	TYPE	MOUNTING	VISORS	LOUVERS	No.	TYPE	MOUNTING	
①	16-2-100 W/ 8' MAST ARM		64	3S12"	MAS	T				BACKPLATE	
②	MUNI POLE W/ LUMINAIRE	150W HPS	61	3S12"	SV-1-T	T		68	1S-COUNT	SP-1	SIGNAL 61 RE-USE EX HOLE ON NORTH SIDE OF POLE
③	MUNI POLE W/ LUMINAIRE	150W HPS	82	3S12"	SV-1-T	T		49	1S-COUNT	SP-1	APS-2W SIGNAL 82 RE-USE EX HOLE ON EAST SIDE OF POLE
④	1-A (10')		81	3S12"	TV-1-T	T		88	1S-COUNT	SP-1	APS-2W APS-2W
⑤	1-A (10')		22	3S12"	TV-1-T	T		69	1S-COUNT	SP-1 (22")	
⑥	16-2-100 W/ 8' MAST ARM		24	3S12"	MAS	T				BACKPLATE	
⑦	1-A (10')		21	3S12"	TV-1-T	T		28	1S-COUNT	SP-1	APS-2W
⑧	1-A (15')		42	3S12"	SV-1-T	T		89	1S-COUNT	SP-1	MOUNT BOTTOM OF 42 AT 10' APS-2W
⑨	MUNI POLE W/ LUMINAIRE	150W HPS	41	3S12"	SV-1	T		48	1S-COUNT	SP-1	
⑩	MUNI POLE W/ LUMINAIRE	150W HPS	62	3S12"	SV-1-T	T		29	1S-COUNT	SP-1-T	APS-2W SIGNAL 62 & 29 RE-USE EX HOLE ON NORTH SIDE OF POLE

SHEET NOTES:

- ① SPLICE NEW 12C INTERCONNECT CABLE TO EXISTING 12C INTERCONNECT CABLE.
- ② PRIOR TO ABANDONING CONDUIT AND WIRES IN PLACE. CONTRACTOR TO FIELD VERIFY ALL EXISTING CIRCUIT TO REMAIN. UNUSED WIRES SHALL BE CUT TO THE FACE OF PULLBOX.
- ③ MAST ARM PLUMBIZER SHALL BE MOUNTED BETWEEN YELLOW AND GREEN SIGNAL HEAD
- ④ PROVIDE 3" CONDUIT AND RISER PER PG&E GREEN BOOK REQUIREMENT. COORDINATE WITH PG&E THROUGH SFPUC FOR SERVICE CONNECTION.
- ⑤ CONTRACTOR TO PROVIDE WIRING. CITY FORCE TO PROVIDE APS PUSH BUTTON.
- ⑥ R/C EX TRAFFIC SIGNAL EXTERNAL CONDUIT AT LEAST 1 FEET BELOW GRADE

PHASE DIAGRAM



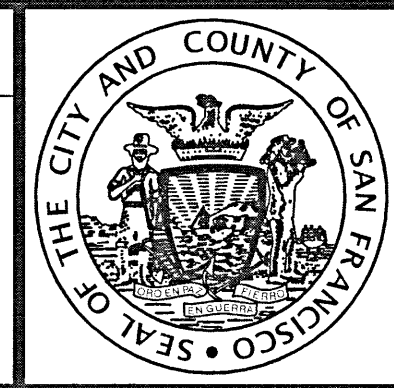
PHASE SEQUENCE

G	Y	R		SOUTH VAN NESS AVENUE (NB + SB) - Ø2 + Ø6
R		G	Y R	16TH STREET (EB + WB) - Ø4 + Ø8
WM	FRH		RH	PED XING 16TH STREET (ES + WS) - Ø2P + Ø6P
	RH	WM	FRH RH	PED XING SOUTH VAN NESS AVE (SS + NS) - Ø4P + Ø8P

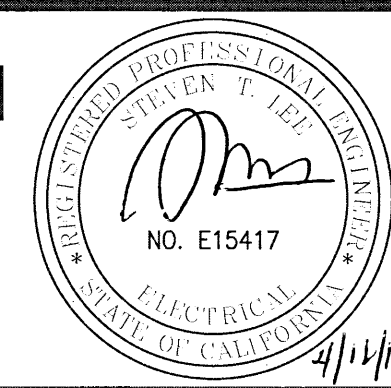
SWITCHOVER 8/2/17
SOUTHBOUND DARK:9:11 AM
FULL INTERSECTION DARK: 9:23 AM
3-COLOR: 10:43 AM
J. Diaz, N. Kobayashi (MTA)
M.Chue, K.Moradi (Signal Shop)
D.Brugmann (PW)
S. Kuang (PEL)

NO.	DATE	DESCRIPTION	BY	APP.
6/22/22	4/10	PG&E SERVICE AND MISC POLE LAYOUT CHANGES	JL	LV
NO.	DATE	DESCRIPTION	BY	APP.
TABLE OF REVISIONS				

REFERENCE INFORMATION
& FILE NO. OF SURVEYS



INFRASTRUCTURE DIVISION
DEPARTMENT OF PUBLIC WORKS
CITY AND COUNTY OF SAN FRANCISCO



DESIGNED: DATE: SS/DY/ZH 8/2015	APPROVED: SECTION MANAGER DATE: SS/DY/ZH 8/2015
DRAWN: DATE: SS/DY/ZH 8/2015	DEPUTY DIVISION MANAGER DATE: MW/SL
CHECKED: DATE: MW/SL	DIVISION MANAGER DATE:

SCALE:
AS SHOWN
SHEET OF SHEETS
13 OF 22

SOUTH VAN NESS AVE TRAFFIC SIGNAL UPGRADE
16TH STREET AND SOUTH VAN NESS AVENUE
TRAFFIC SIGNAL MODIFICATIONS

CONTRACT NO. 2569J
DRAWING NO. E-3.0
FILE NO. 105,270
REV. NO. 2

Drawing Path: V:\2569J_South_Van_Ness_Avenue_Signal_Upgrade_Project\3_Construction\Design_Team\EEL\PCO\Xref\20PW Title Block.dwg
Plot Time: Mon, 17 Apr 2017 - 6:17pm
Model Units: Feet
Login: Dcargatono

