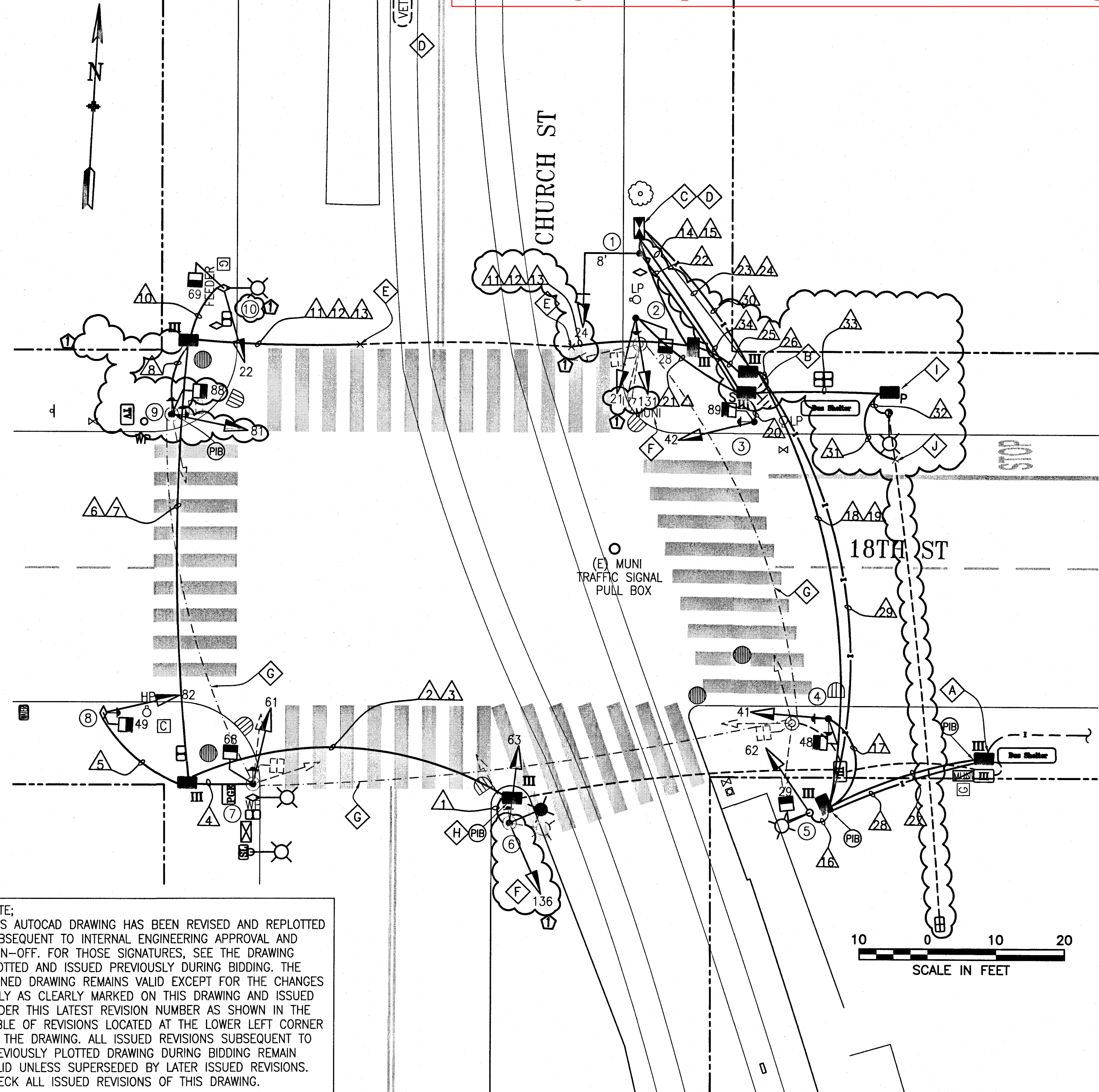


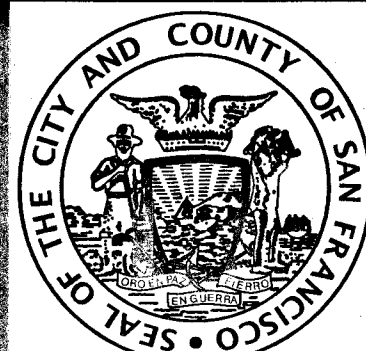
Signal switchover on 1/4/2018 at 11:00AM
Attendees:
DP RE: Dan Brugmann
SFMTA TE: Celine Leung
SFMTA Signal Shop: Karim Moradi & Trevor Pettigrew



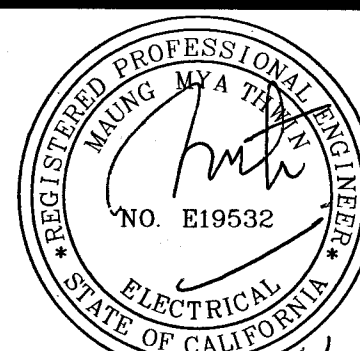
NOTE:
THIS AUTOCAD DRAWING HAS BEEN REVISED AND REPLOTTED SUBSEQUENT TO INTERNAL ENGINEERING APPROVAL AND SIGN-OFF. FOR THOSE SIGNATURES, SEE THE DRAWING PLOTTED AND ISSUED PREVIOUSLY DURING BIDDING. THE SIGNED DRAWING REMAINS VALID EXCEPT FOR THE CHANGES ONLY AS CLEARLY MARKED ON THIS DRAWING AND ISSUED UNDER THIS LATEST REVISION NUMBER AS SHOWN IN THE TABLE OF REVISIONS LOCATED AT THE LOWER LEFT CORNER OF THE DRAWING. ALL ISSUED REVISIONS SUBSEQUENT TO PREVIOUSLY PLOTTED DRAWING DURING BIDDING REMAIN VALID UNLESS SUPERSEDED BY LATER ISSUED REVISIONS. CHECK ALL ISSUED REVISIONS OF THIS DRAWING.

NO.	DATE	DESCRIPTION	BY	APP.
5/15	PCO 5	ADD TRANSIT SIGNALS, COMBINE SIGNAL POLES, AND NEW POWER SERVICE.	CXL/ZH	PT

REFERENCE INFORMATION
& FILE NO. OF SURVEYS



INFRASTRUCTURE DIVISION
DEPARTMENT OF PUBLIC WORKS
CITY AND COUNTY OF SAN FRANCISCO



DESIGNED: DATE: CXL/WC 3/14
DRAWN: DATE: DNM/WC 07/11/14
CHECKED: DATE: CMH/SL 07/11/14

APPROVED
SECTION MANAGER DATE:
DEPUTY DIVISION MANAGER DATE:
DIVISION MANAGER DATE:

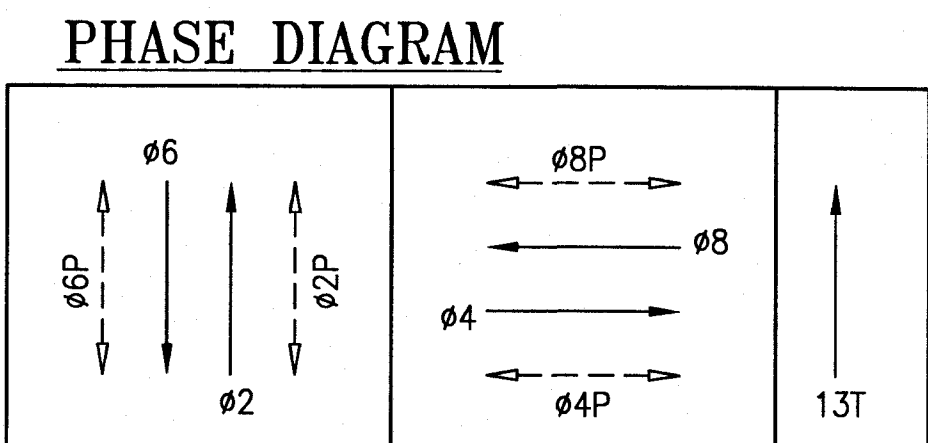
SCALE:
AS SHOWN
SHEET OF SHEETS
14 OF 44

TRANSIT SIGNAL IMPROVEMENT PROJECT
18TH ST AND CHURCH ST
TRAFFIC SIGNAL WORK

CONTRACT NO. 2419J
DRAWING NO. E-3.0
FILE NO. 98,622
REV. NO. 1

POLE AND EQUIPMENT SCHEDULE										CONTRACT WORK IN BOLD	
POLE No.	TYPE OF POLE	LUMINAIRE VOLTAGE/WATTAGE	VEHICLE SIGNAL				PEDESTRIAN SIGNAL			REMARKS	
			No.	TYPE	MOUNTING	VISORS	LOUVERS	No.	TYPE	MOUNTING	
1	16-1-100 W/ 8' MAST ARM		24	3S12"	MAS	T					BACKPLATE
2	1-A (15')		21 131	3S12" T2S12"B	SV-1-T TV-1-T	T		28	1S-COUNT	SP-1	APS X MOUNT MUNI 131 AT 15'
3	1-A (10')		42	3S12"	TV-1-T	T		89	1S-COUNT	SP-1	MOUNT NIPPLES 45" TOWARDS PROPERTY LINE APS X
4	1-A (10') CITY STANDARD		41	3S12"	TV-1-T	T		48	1S-COUNT	SP-1	MOUNT NIPPLES 45" TOWARDS PROPERTY LINE 2 APS's X
5	STREET LIGHT		62	3S12"	SV-1-T	T		29	1S-COUNT	SP-1	INSTALL EXTERNAL CONDUIT APS X
6	CITY STANDARD STREET LIGHT		63 136	3S12" T2S12"B	SV-1-T SV-1-T	T					APS X MOUNT MUNI 136 AT 15'
7	1-A (10')		61	3S12"	TV-1-T	T		68	1S-COUNT	SP-1	APS X
8	EX MUNI POLE		82	3S12"	SV-1-T	T		49	1S-COUNT	SP-1	INSTALL EXTERNAL CONDUIT APS X
9	1-A (10')		81	3S12"	TV-1-T	T		88	1S-COUNT	SP-1	VEHICLE SIGNAL MOUNT WITH 16" NIPPLE TOWARDS PROPERTY LINE 2 APS's X
10	CITY STANDARD STREET LIGHT		22	3S12"	SV-1-T	T		69	1S-COUNT	SP-1	INSTALL EXTERNAL CONDUIT

- DETAIL NOTES:**
- A CONTRACTOR TO REMOVE AND SALVAGE EXISTING INTERSECTION CONTROLLER CABINET AND DELIVER TO CITY TRAFFIC SIGNAL SHOP. F/I TYPE III PULL BOX IN PLACE AND EXTEND POWER SERVICE AND INTERCONNECT WIRING TO NEW TRAFFIC CONTROLLER CABINET LOCATION AT NORTHEAST CORNER.
 - B CONTRACT SHALL PROVIDE 40A INLINE FUSE AND FUSE HOLDER FOR SERVICE DISCONNECT IN FIRST PULL BOX NEXT TO THE PG&E SERVICE.
 - C CONTRACTOR TO INSTALL CITY FURNISHED INTERSECTION TRAFFIC SIGNAL CONTROLLER CABINET.
 - D CONTRACTOR TO INSTALL VETAG WIRING PER MUNI'S DESIGN SEE DRAWING EL-03.
 - E CONTRACTOR TO VERIFY EXISTING CONDUIT RUN AND INTERCEPT EXISTING 3-2" GRSC CONDUITS WITH NEW CONDUIT TO MATCH. REFER TO MUNI CONTRACT NO. 1233 MISCELLANEOUS RAIL REPLACEMENT PHASE 2 DRAWING TP-03.
 - F LUNAR BAR TRANSIT SIGNAL FOR MUNI 131 & 136 SIGNAL SHALL BE USED AT POLE NO. 2 & 6 PER CA MUTCD.
 - G ABANDON EXISTING CONDUIT AND WIRING. CUT EXISTING CONDUIT AND WIRING TO PULL BOX WALL. CAP END. PRIOR TO REMOVAL OF EXISTING CABLE IN EXISTING CONDUIT, CONTRACTOR TO FIELD VERIFY AND MAINTAIN EXISTING SERVICES TO STREETLIGHTS AND TRAFFIC CONTROLLER.
 - H RECONNECT NEW STREETLIGHT TO EXISTING STREETLIGHT CIRCUIT AND PROVIDE A 10A INLINE FUSE AND FUSE HOLDER FOR STREETLIGHT.
 - I CONTRACTOR TO COORDINATE WITH PG&E TO PICK UP BOX FROM PG&E VENDOR.
 - J CONTRACTOR TO COORDINATE WITH RPD VIA RE 3 WEEKS IN ADVANCE ON PG&E OUTAGE PER PE&E NOTIFICATION. CONTACT MY-LINH NGUYEN AT (415) 695-3458.
 - K CONTRACTOR TO INSTALL APS WIRING AS INDICATED IN CONDUIT AND WIRING SCHEDULE. CITY FORCES TO INSTALL AND ACTIVATE APS BUTTONS ON POLES AS SHOWN ON INTERSECTION DRAWING AND AS INDICATED IN POLE & EQUIPMENT SCHEDULE.



PHASE SEQUENCE				
G	Y	R		CHURCH ST (NB & SB) - 02 & 06
R		G	Y	18th ST (EB & WB) - 04 & 08
WM	FRH		RH	PED XING 18th ST (ES & WS) - 02P & 06P
	RH	WM	FRH	PED XING CHURCH ST (SS & NS) - 04P & 08P
		Rx		TRANSIT SIGNAL - 013T

		DRAWING CORRELATION (FURNISH AND INSTALL CONDUIT AND WIRES)																																	
CONDUIT RUN NUMBER		1	2	3	4	5	6	7	8	9	10	11	12	13	14	15	16	17	18	19	20	21	22	23	24	25	26	27	28	29	30	31	32	33	34
CONDUIT SIZE (INCH)		2	2	2	2	2	2	2	2	2	2	2	2	2	3	2	2	2	2	2	2	2	2	3	2	2	2	2	2	2	5	5	3	3	
NOTES																																			
MUNI SIGNAL 136	2	2				2				GRS					2		GRS								SP										
VEHICLE SIGNAL 63	3	3				3						3			3											SP	SP								
APS PPB FOR XING CHURCH ON POLE 6	2	2				2						2			2																				
VEHICLE SIGNAL 61				3		3						3			3																				
PED SIGNAL 68				2		2						2			2																				
APS PPB FOR XING CHURCH ON POLE 7				2		2						2			2																				
VEHICLE SIGNAL 82					3	3						3			3																				
PED SIGNAL 49					2	2						2			2																				
APS PPB FOR XING 18TH ST ON POLE 8					2	2						2			2																				
VEHICLE SIGNAL 81												2			2																				
PED SIGNAL 88												3			3																				
APS PPB FOR XING 18TH ST ON POLE 9												2			2																				
VEHICLE SIGNAL 22												2			2																				
PED SIGNAL 69												3	3		3																				
APS PPB FOR XING CHURCH ON POLE 9												2	2		2																				
VEHICLE SIGNAL 62												2			2																				
PED SIGNAL 29																	3		3					3			3								
VEHICLE SIGNAL 41																	2							2			2								
PED SIGNAL 48																			3	3				3			3								
APS PPB FOR XING CHURCH ON POLE 4																			2	2				2			2								
APS PPB FOR XING 18TH ST ON POLE 4																			2	2				2			2								
VEHICLE SIGNAL 42																																			

[illegible]

The seal of the City and County of San Francisco, featuring a central shield with a ship, a miner, and a tree, surrounded by the text "SEAL OF THE CITY AND COUNTY OF SAN FRANCISCO".

REGISTERED PROFESSIONAL ENGINEER
 MAUNG MYA THWIN
 NO. E19532
 ELECTRICAL
 STATE OF CALIFORNIA

6/11

APPROVED	
SECTION MANAGER	DATE
DEPUTY DIVISION MANAGER	DATE
DIVISION MANAGER	DATE

CONTRACT NO.	2419J
DRAWING NO.	E-3.1
FILE NO.	98,623
REV. NO.	1