

NOTE:
THIS AUTOCAD DRAWING HAS BEEN REVISED AND REPLOTTED
SUBSEQUENT TO INTERNAL ENGINEERING APPROVAL AND
SIGN-OFF. FOR THOSE SIGNATURES, SEE THE DRAWING
PLOTTED AND ISSUED PREVIOUSLY DURING BIDDING. THE
SIGNED DRAWING REMAINS VALID EXCEPT FOR THE CHANGES
ONLY, AS CLEARLY MARKED ON THIS DRAWING AND ISSUED
UNDER THIS LATEST REVISION NUMBER AS SHOWN IN THE
TABLE OF REVISIONS LOCATED AT THE LOWER LEFT CORNER
OF THE DRAWING. ALL ISSUED REVISIONS SUBSEQUENT TO
PREVIOUSLY PLOTTED DRAWING DURING BIDDING REMAIN
VALID UNLESS SUPERSEDED BY LATER ISSUED REVISIONS.
CHECK ALL ISSUED REVISIONS OF THIS DRAWING.

SWITCHOVER 8/15/17
DARK: 10:06 AM
3-COLOR: 10:38 AM
J. Diaz, N. Kobayashi (MTA)
M. Chue, K. Moradi (Signal Shop)
D. Brugmann (PW)
S. Kuang (PEL)

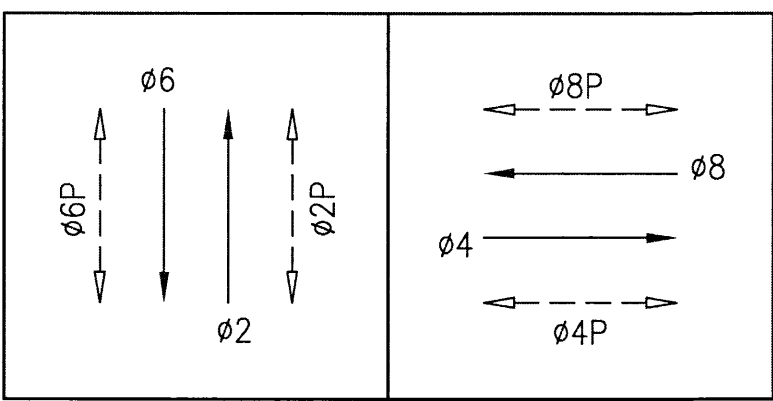
POLE AND EQUIPMENT SCHEDULE

POLE No.	TYPE OF POLE	LUMINAIRE VOLTAGE/ WATTAGE	VEHICLE SIGNAL					PEDESTRIAN SIGNAL			REMARKS
			No.	TYPE	MOUNTING	VISORS	LOUVERS	No.	TYPE	MOUNTING	
①	MUNI POLE W/ LUMINAIRE		61	3S12"	SV-1-T	T		68	1S-COUNT	SP-1-T	EXTERNAL CONDUIT <div>1 E-0.6</div>
②	1-A (10')		82	3S12"	TV-1-T	T		49	1S-COUNT	SP-1 (22")	
③	CITY STANDARD STREET LIGHT	150W HPS	81	3S12"	SV-1-T	T		69 88	1S-COUNT 1S-COUNT	SP-1-SF(12") SP-1(22")	
④	1-A (10')		22 65	3S12" 3S12"	TV-2-T	T T					
⑤	16-2-100 W/ 8' MAST ARM		21 24	3S12" 3S12"	SV-1-T MAS 5	T T		28	1S-COUNT	SP-1	BACKPLATE
⑥	MUNI POLE W/ LUMINAIRE		42	3S12"	SV-1-T	T		89	1S-COUNT	SP-1	8
⑦	1-A (10')		41	3S12"	TV-1-T	T		48	1S-COUNT	SP-1	
⑧	MUNI POLE W/ LUMINAIRE		62	3S12"	SV-1-T	T		29	1S-COUNT	SP-1	8

SHEET NOTES:

- ① CITY FORCES TO RELOCATE PARKING METER FOUND AT POLE NO. 2.
- ② PRIOR TO CONSTRUCTING PULLBOXES, CONDUIT AND POLE. COORDINATE WITH CURB RAMP IN PROJECT 2595J
- ③ R/S EX PULLBOX LID
- ④ PROVIDE 3" CONDUIT AND RISER PER PG&E GREEN BOOK REQUIREMENT. COORDINATE WITH PG&E THROUGH SFPUC FOR SERVICE CONNECTION.
- ⑤ MAST ARM PLUMBIZER SHALL BE MOUNTED BETWEEN YELLOW AND GREEN SIGNAL HEAD
- ⑥ PRIOR TO ABANDONING CONDUIT AND WIRES IN PLACE. CONTRACTOR TO FIELD VERIFY ALL EXISTING CIRCUIT TO REMAIN. UNUSED WIRES SHALL BE CUT TO THE FACE OF PULLBOX.
- ⑦ SPLICE NEW 12C INTERCONNECT CABLE TO EXISTING 12C INTERCONNECT CABLE.
- ⑧ RUN CONDUIT ALONG THE EXISTING POLE FOUNDATION WITH STUB OUT AT THE BASE. PROVIDE LB CONDULET, GASKET AND INNER TUBE. SEE PHOTO. 4 E-0.6
- ⑨ CONTRACTOR SHALL CAREFULLY REMOVE BIKE RACK AND DELIVER TO SFMTA SIGN SHOP AT 1508 BANCROFT AVE. RESTORE SIDEWALK.

PHASE DIAGRAM



PHASE SEQUENCE

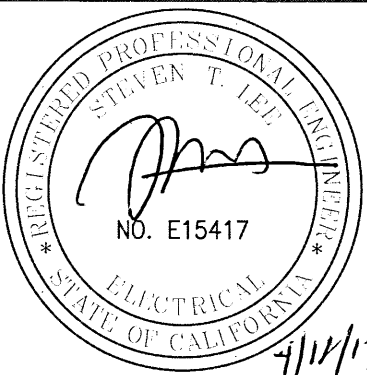
G		Y	R			SOUTH VAN NESS AVENUE (NB + SB) – Ø2 + Ø6		
R			G		Y	R	18TH STREET (EB + WB) – Ø4 + Ø8	
WM		FRH	RH			PED XING 18TH STREET (ES + WS) – Ø2P + Ø6P		
RH		WM	FRH		RH	PED XING SOUTH VAN NESS AVE (SS + NS) – Ø4P + Ø8P		

NO.		DATE	DESCRIPTION	BY	APP.
①	4/10	PG&E SERVICE AND MISC POLE LAYOUT CHANGES	DG	SL	
TABLE OF REVISIONS					

REFERENCE INFORMATION
& FILE NO. OF SURVEYS



INFRASTRUCTURE DIVISION
DEPARTMENT OF PUBLIC WORKS
CITY AND COUNTY OF SAN FRANCISCO



DESIGNED: DATE: SS/DY/ZH 8/2015
DRAWN: DATE: SS/DY/ZH 8/2015
CHECKED: DATE: MV/SL

APPROVED
SECTION MANAGER DATE:
DEPUTY DIVISION MANAGER DATE:
DIVISION MANAGER DATE:

SCALE:
AS SHOWN
SHEET OF SHEETS
17 OF 22

SOUTH VAN NESS AVE TRAFFIC SIGNAL UPGRADE
18TH STREET AND SOUTH VAN NESS AVENUE
TRAFFIC SIGNAL MODIFICATIONS

CONTRACT NO. 2569J
DRAWING NO. E-5.0
FILE NO. 105,274
REV. NO. 1

CONDUIT AND WIRING SCHEDULE (FURNISH AND INSTALL CONDUIT AND WIRES)																																			
CONDUIT RUN NUMBER		△1	△2	△3	△4	△5	△6	△7	△8	△9	△10	△11	△12	△13	△14	△15	△16	△17	△18	△19	△20	△21	△22	△23	△24	△25	△26								
CONDUIT SIZE (INCH)		2	2	2	2	2	2	2	2	2	2	2	3	2	3	2	2	2	3	3	2	2	2	2	2	2	2	2							
			GRS			GRS			GRS			GRS					SP	GRS		◇1	GRS		GRS		GRS										
NOTES																																			
	VEHICLE SIGNAL 65	3		3			3								3																				
	VEHICLE SIGNAL 22	3		3			3								3																				
	PED SIGNAL 69		2	2			2								2																				
	VEHICLE SIGNAL 81		3	3			3								3																				
	PED SIGNAL 88		2	2			2								2																				
	VEHICLE SIGNAL 82				3		3								3																				
	PED SIGNAL 49				2		2								2																				
	VEHICLE SIGNAL 61					3	3								3																				
	PED SIGNAL 68					2	2								2																				
	VEHICLE SIGNAL 24							3		3			3																						
	VEHICLE SIGNAL 21							3		3			3																						
	PED SIGNAL 28							2		2			2																						
	VEHICLE SIGNAL 89								3	3			3																						
	PED SIGNAL 42								2	2			2																						
	VEHICLE SIGNAL 41										3		3																						
	PED SIGNAL 48										2		2																						
	VEHICLE SIGNAL 62												3	3																					
	PED SIGNAL 29											2	2																						
	#14 NEUTRAL	2	3		2	2		3	2		2	2																							
	#14 SPARE			3			3			3			3		3																				
	TOTAL #14 WIRES	8	10	16	7	7	26	11	7	16	7	7	26		26																				
	#10 WIRES NEUTRAL			1			2			1			2		2																				
	#10 WIRES STREET LIGHT		2																																
	#8 WIRES STREET LIGHT																	2	2		2		2												
	#8 WIRES (120 V SERVICE)															2		2	2																
	INTERCONNECT 12C CABLE														2							2		2				2							

SHEET NOTES:

1 GRSC, PG&E SERVICE CABLE BY PG&E

[illegible]