

POLE AND EQUIPMENT SCHEDULE											
POLE No.	TYPE OF POLE	LUMINAIRE (HPS)	VEHICLE SIGNAL					PEDESTRIAN SIGNAL			REMARKS
		VOLTAGE/ WATTS	No.	TYPE	MOUNTING	VISORS	LOUVERS	No.	TYPE	MOUNTING	
①	16-1-70 WITH 20' MAST ARM		24 21	3S12" 3S8"	MAS SV-1-T	T T		28	1S-LED <i>count *</i>	SP-1	BACKPLATE
②	17B-1-70 WITH 8' MAST ARM AND 6' LUMINAIRE ARM AND LUMINAIRE	240V/100W D	42	3S12" <i>FY</i> **	MAS	T		89	1S-COUNT	SP-1	BACKPLATE
③	1-A (10')		41	3S8" <i>FY</i> **	TV-1	T		48	1S-COUNT	SP-1	
④	1-A (13')		25 62	3S8" 3S8"	TV-2-T	T T		29	1S-LED <i>COUNT</i>	SP-1	
⑤	16-1-70 WITH 20' MAST ARM		64 61	3S12" 3S8"	MAS SV-1-T	T T		68	1S-LED <i>COUNT</i>	SP-1	BACKPLATE <i>61 @ 13'</i>
⑥	STREET LIGHT WITH 6' LUMINAIRE ARM AND LUMINAIRE	240V/100W D	45 82	3S8" <i>FY</i> ** 3S8" <i>FY</i> **	SV-2-TA	T T		49	1S-COUNT	SP-1	
⑦	1-A (13')		81	3S8" <i>FY</i> **	TV-1	T		88	1S-COUNT	SP-1	
⑧	1-A (13')		22 65	3S8" 3S8"	TV-2-T	T		69	1S-LED <i>COUNT</i>	SP-1	

DETAIL NOTES:

- A SPlice NEW SL WIRING TO ADD NEW SL TO EX. CIRCUIT.
- C R/C EXISTING SL WIRING. F/I NEW WIRING AS NOTED.
- D F/I WITH INTEGRAL BALLAST AND PHOTOELECTRIC CONTROL. F/I FUSE AND FUSE HOLDERS PER SPDWSF FILE 49,092.
- F R/C EX. SL WIRING AND CONDUIT. REPAIR SIDEWALK OR MEDIAN TO MATCH EXISTING.
- S CONTRACTOR SHALL COORDINATE WITH PG&E VIA WALLY SUN OF HETCH HETCHY AT (415) 554-1873 FOR SERVICE CONNECTION WORK PRIOR TO START OF CONSTRUCTION.
- S2 F/I OF PG&E SPlice BOX, SERVICE CONDUITS, AND RISERS ARE DELETABLE BID ITEMS (SEE CONTRACT SPECIFICATIONS).
- T F/I IN-LINE FUSE HOLDER W/ 40 A FUSE FOR IC SERVICE.
- J F/I GUARD POST PER SPDWSF FILE # LA-021. EXCEPT GUARD POST SHALL BE 6" NOMINAL DIAMETER.

* GD RATED BL VIA PHONE CALL TO INSTALL
COUNTDOWN UNITS FOR THESE PED SIGNALS

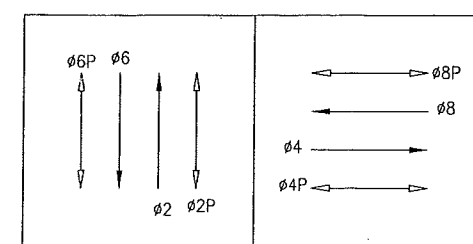
** CHANGE MADE BY SIGNAL SHOP,
NOT BY CONTRACTOR

SHEET NOTES:

- CONTRACTOR TO R/C PORTION OF MEDIAN AND CONSTRUCT BULBS FOR MEDIANS ALONG GUERRERO ST. SEE DRAWING R-1.
- NEW STRIPING TO BE INSTALLED BY CITY FORCES.

SIGNAL TURN ON (FLASH), TUES, 5-17-05 0928
SIGNAL SHOP: JD, PN
ENGRG: ET, DRC
3-COLOR OPERATION, THURS, 5-19-05 0902
SIGNAL SHOP: JD, LM
ENGRG: ET, DRC

PHASE DIAGRAM

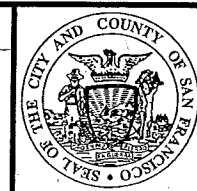


PHASE SEQUENCE

G	Y	R	GUERRERO STREET (NB AND SB)	
R		Y	21ST STREET (EB AND WB)	
WM	FRH	RH	PEDS XING 21ST ST (E/S AND W/S)	
RH	WM	FRH	PEDS XING GUERRERO ST (N/S AND S/S)	

NO.	DATE	DESCRIPTION	BY	APP.
1	10/04	ADD BOLLARDS	RP	BC
0	01/04	ISSUED FOR BID		
CHECK WITH TRACING TO SEE IF YOU HAVE LATEST REVISION				

REFERENCE INFORMATION
& FILE NO. OF SURVEYS



BUREAU OF ENGINEERING
DEPARTMENT OF PUBLIC WORKS
CITY AND COUNTY OF SAN FRANCISCO



DESIGNED: DATE:	APPROVED
GD 01/04	SECTION MANAGER DATE:
DRAWN: DATE:	DEPUTY BUREAU MANAGER DATE:
GD 01/04	CITY ENGINEER DATE:
CHECKED: DATE:	
BC 01/04	

SCALE:
AS SHOWN
SHEET OF SHEETS

NEW TRAFFIC SIGNALS CONTRACT 56
21ST AND GUERRERO STREETS
TRAFFIC SIGNAL WORK
AND POLE & EQUIPMENT SCHEDULE

SPECIFICATION NO.	0761J
DRAWING NO.	E-2.0
FILE NO.	84,255
REV. NO.	1

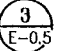
Drawing Path: V:\0761J-New Traffic Signals\Contract_56\3 Construction\Change Orders\Drawings\0761J_E02-PO3.dgn
Drawing Title: Block.dwg
Model Units: Feet
Xrefs: V:\0761J-New Traffic Signals\Contract_56\BOE Title Block.dwg
Plot Time: Thu, 14 Oct 2004 - 2:49pm

CONDUIT AND WIRING SCHEDULE FOR DWG. E-2.0 & E-2.2																											
CONDUIT RUN NUMBER	1	2	3	4	5	6	7	8	9	10	11	12	13	14	15	16	17	18	19	20	21	22	23	24	25		
CONDUIT SIZE (INCH)	2	2	2	2	3	2	2	2	3	2	3	2	2	2	2	2	2	2	2	2	2	1.5	2	2	2		
NOTES						SPARE	SPARE			SPARE											P	SEE DRW. E-2.2	GRSC		S2		
#14 WIRES																											
PED. SIGNAL 69									2								2		2								
VEH. SIGNAL 22									3				3				3		3								
VEH. SIGNAL 65									3				3				3		3								
PED. SIGNAL 88									2				2				2	2									
VEH. SIGNAL 81									3				3				3	3									
PED. SIGNAL 49									2						2		2										
VEH. SIGNAL 45									3						3		3										
VEH. SIGNAL 82									3						3		3										
PED. SIGNAL 68									2						2	2											
VEH. SIGNAL 61									3						3	3											
VEH. SIGNAL 64									3						3	3											
PED. SIGNAL 28	2			2		2																					
VEH. SIGNAL 21	3			3		3																					
VEH. SIGNAL 24	3			3		3																					
PED. SIGNAL 89			2	2		2																					
VEH. SIGNAL 42			3	3		3																					
PED. SIGNAL 48					2	2																					
VEH. SIGNAL 41					3	3																					
PED. SIGNAL 29									2			2															
VEH. SIGNAL 62									3			3															
VEH. SIGNAL 25									3			3															
#14 NEUTRAL	3	2		2								2			3	2		2	2								
SPARE			3		3				3				3			3											
TOTAL #14 WIRES	11	7	16	7	21				40			10	16	16	11	10	16	7	10								
#10 WIRES NEUTRAL			1		2				3				1	1			1										
#8 WIRES (120V SERVICE)								2																2	2		
#6 BSCW (SEE SHEET NOTE 1)																											
STREET LIGHT #8 WIRE																2						2	2				
12/C INTERCONNECT											1									1	1						

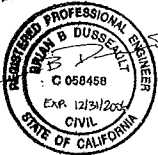
DETAIL NOTES:

- P F/I 4-2" POLYETHYLENE SCHEDULE 80 CONDUIT WITH 3/8" PULL TAPE. IN ONE OF THE EMPTY CONDUITS, INSTALL TWO #8 AWG STRANDED COPPER LOCATING WIRES (ONE WITH BLACK INSULATION AND THE OTHER WITH WHITE INSULATION). SEE SECTION 02890 IN CONTRACT SPECIFICATIONS.
- S2 F/I OF PG&E SPLICE BOX, SERVICE CONDUITS, AND RISERS ARE DELETABLE BID ITEMS (SEE CONTRACT SPECIFICATIONS).

SHEET NOTE:

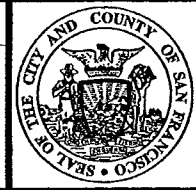
1. SEE GROUNDING LAYOUT  AND SECTION 02890 IN CONTRACT SPECIFICATIONS.

FEBRUARY 2004

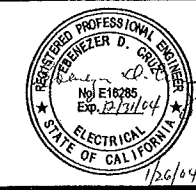



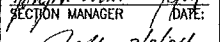
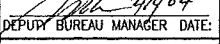
NO.	DATE	DESCRIPTION	BY	APP.
0	01/04	ISSUED FOR BID		
TABLE OF REVISIONS				
CHECK WITH TRACING TO SEE IF YOU HAVE LATEST REVISION				

REFERENCE INFORMATION & FILE NO. OF SURVEYS
--



BUREAU OF ENGINEERING
DEPARTMENT OF PUBLIC WORKS
CITY AND COUNTY OF SAN FRANCISCO



DESIGNED:	DATE:	APPROVED:
GD	01/04	
DRAWN:	DATE:	SECTION MANAGER DATE:
GD	01/04	
CHECKED:	DATE:	DEPUTY BUREAU MANAGER DATE:
BC	01/04	
		CITY ENGINEER DATE:

SCALE:
NONE
SHEET OF SHEETS
11 OF 24

NEW TRAFFIC SIGNALS CONTRACT 56
21ST AND GUERRERO STREETS CONDUIT AND WIRING SCHEDULE

SPECIFICATION NO.	0761J
DRAWING NO.	E-2.1
FILE NO.	84,256
REV. NO.	0

