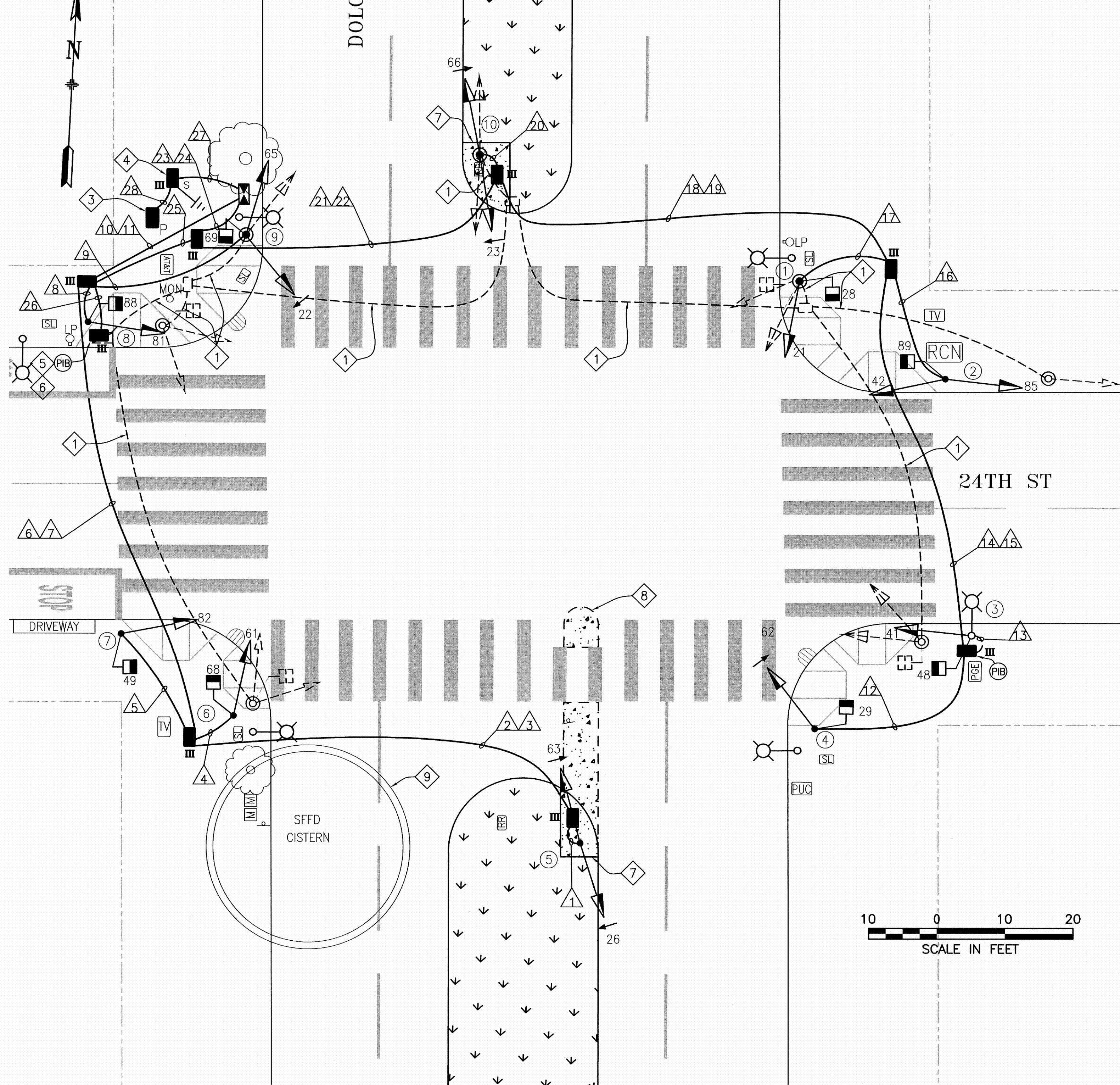


SIGNAL SWITCHOVER HELD 10/3/2019
DARK @ 9:30 AM; 3-COLOR @ 11:03 AM
J. HORNOSTEL (MTA)
R. HO & T. PETTIGREW (SIGNAL SHOP)

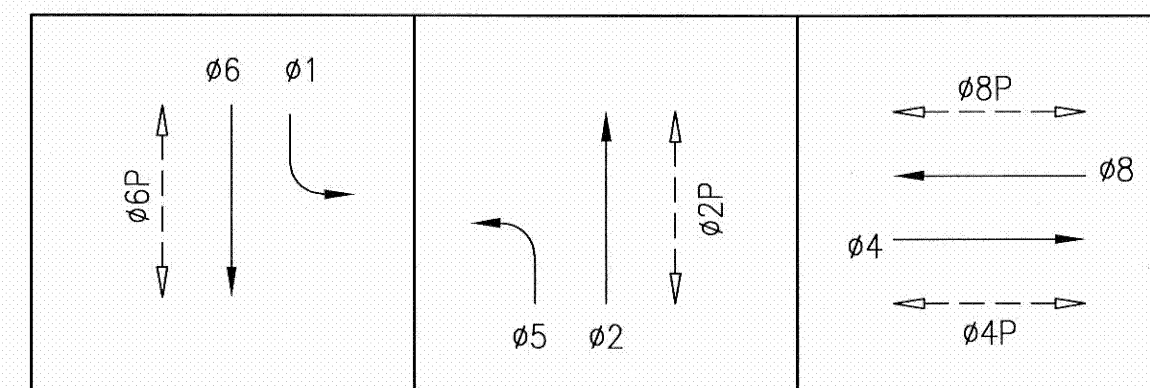


POLE AND EQUIPMENT SCHEDULE										
POLE No.	TYPE OF POLE	LUMINAIRE VOLTAGE/WATTAGE	VEHICLE SIGNAL					PEDESTRIAN SIGNAL		
			No.	TYPE	MOUNTING	VISORS	LOUVERS	No.	TYPE	MOUNTING
①	1-A(10')		21	3S12"	TV-1-T	T		28	1S-COUNT	SP-1
②	1-A(10')		42 85	3S12" 3S12"	TV-2-T	T T		89	1S-COUNT	SP-1
③	CITY STANDARD STREET LIGHT		41	3S12"	SV-1-T	T		48	1S-COUNT	SP-1
④	1-A(10')		62	3S12"LA	TV-1-T	T		29	1S-COUNT	SP-1
⑤	1-A(13')		26 63	4S12"GLA 4S12"GLA	SV-1-T TV-1-T	T T				MOUNT 26 @ 4'6"
⑥	1-A (13')		61	3S12"	TV-1-T	T		68	1S-COUNT	SP-1
⑦	1-A (13')		82	3S12"	TV-1-T	T		49	1S-COUNT	SP-1
⑧	1-A(13')		81	3S12"	TV-1-T	T		88	1S-COUNT	SP-1
⑨	1-A(10')		22 65	3S12"LA 3S12"	TV-2-T	T T		69	1S-COUNT	SP-1
⑩	1-A(10')		23 66	4S12"GLA 4S12"GLA	TV-1-T SV-1-T	T T				MOUNT 66 @ 4'6"

SHEET NOTES:

- ABANDON EXISTING CONDUIT AND WIRING, CUT EXISTING CONDUIT TO PULLBOX WALL AND CAP ENDS. PRIOR TO REMOVING OF EXISTING CABLES IN EXISTING CONDUIT, FIELD VERIFY AND MAINTAIN SERVICES TO STREETLIGHTS AND TRAFFIC CONTROLLER.
- INSTALL CITY FURNISHED ONE SECTION LED PEDESTRIAN COUNTDOWN SIGNAL MODULE IN CONTRACTOR FURNISHED ONE SECTION PEDESTRIAN SIGNAL HOUSING.
- CONTROLLER SERVICE POINT IS A PG&E SECONDARY BOX LOCATED AT THE NORTHWEST CORNER OF 24TH STREET AND DOLORES STREET. COORDINATE WITH PG&E THROUGH SFPUC FOR ACTIVATION OF SERVICE POINT.
- F/I 40A INLINE FUSE AND FUSE HOLDER FOR TRAFFIC SIGNAL SERVICE DISCONNECT IN FIRST PULL BOX NEXT TO THE NEW PG&E SERVICE POINT.
- COORDINATE WITH PG&E THROUGH SFPUC FOR DEACTIVATION OF SERVICE CONNECTION WORK TO BE COMPLETED AFTER ACTIVATION OF NEW SERVICE POINT. THIRTY DAYS NOTICE IS REQUIRED.
- EXTEND 12/C INTERCONNECT TO NEW IC LOCATION PER CONDUIT AND WIRING SCHEDULE. SPLICE TO EXISTING 12/C TO MAINTAIN INTERCONNECT SYSTEM.
- F/I MINIMUM OF 12" CONCRETE APRON AROUND PULL BOXES AND POLE FOUNDATIONS IN LANDSCAPED AREAS AS SHOWN.
- R/C EXISTING CONCRETE ISLAND. RESTORE CONCRETE BASE AND AC WEARING SURFACE PER SFPW STANDARD PLANS.
- EXERCISE CAUTION TO PROTECT CISTERN.

PHASE DIAGRAM



NO.	DATE	DESCRIPTION	BY	APP.
TABLE OF REVISIONS				

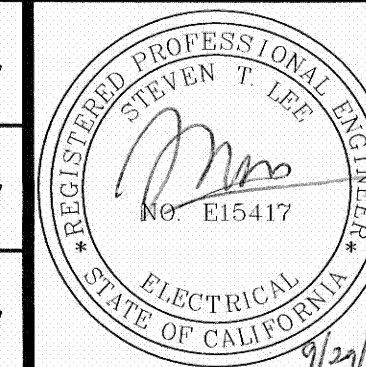
REFERENCE INFORMATION
& FILE NO. OF SURVEYS



DESIGN & ENGINEERING
CITY & COUNTY OF SAN FRANCISCO
SAN FRANCISCO PUBLIC WORKS
30 VAN NESS AVENUE, 5TH FLOOR
SAN FRANCISCO, CA 94102 - 6028

Section Mgr:	PHILIP THWIN	Date:	10/2/17
Deputy Division Mgr:	IQBALBHAI DHAPA	Date:	10/12/17
Division Mgr:	PATRICK RIVERA	Date:	10/2/17

DESIGNED:	DATE:
JH/CMF	5/2017
DRAWN:	DATE:
JH/CMF	5/2017
CHECKED:	DATE:
GD/SL	5/2017



SCALE:
AS SHOWN
SHEET OF SHEETS
14 OF 63

CONTRACT 34 - TRAFFIC SIGNAL MODIFICATIONS	CONTRACT NO. 2805J
24TH STREET AND DOLORES STREET TRAFFIC SIGNAL WORK POLE AND EQUIPMENT SCHEDULE	DRAWING NO. E-3.0
	FILE NO. 109,550
	REV. NO.

CONDUIT AND WIRING SCHEDULE (FURNISH AND INSTALL CONDUIT AND WIRES)																																				
CONDUIT RUN NUMBER		1	2	3	4	5	6	7	8	9	10	11	12	13	14	15	16	17	18	19	20	21	22	23	24	25	26	27	28							
CONDUIT SIZE (INCH)		2	2	2	2	2	2	2	2	2	3	2	2	UNK	2	2	2	2	2	2	2	2	2	3	2	2	2	2	3							
				SP				SP						EX						SP			SP		SP	SP										
NOTES																																				
	VEHICLE SIGNAL 26	4	4				4				4																									
	VEHICLE SIGNAL 63	4	4				4				4																									
	VEHICLE SIGNAL 61				3		3				3																									
	PED SIGNAL 68				2		2				2																									
	VEHICLE SIGNAL 82					3	3				3																									
	PED SIGNAL 49					2	2				2																									
	VEHICLE SIGNAL 81								3		3																									
	PED SIGNAL 88								2		2																									
	VEHICLE SIGNAL 22									3	3																									
	VEHICLE SIGNAL 65									3	3																									
	PED SIGNAL 69									2	2																									
	VEHICLE SIGNAL 62												3		3				3			3		3												
	PED SIGNAL 29												2		2				2			2		2												
	VEHICLE SIGNAL 41													3	3				3			3		3												
	PED SIGNAL 48													2	2				2			2		2												
	VEHICLE SIGNAL 42																3		3			3		3												
	VEHICLE SIGNAL 85																3		3			3		3												
	PED SIGNAL 89																2		2			2		2												
	VEHICLE SIGNAL 21																	3	3			3		3												
	PED SIGNAL 28																	2	2			2		2												
	VEHICLE SIGNAL 23																				4		4		4											
	VEHICLE SIGNAL 66																				4		4		4											
	#14 NEUTRAL	2			2	2			2	2			2	2			2	2			2															
	#14 SPARE		3				3				3				3				3			3		3												
	TOTAL #14 WIRES	10	11		7	7	21		7	10	34		7	7	13		10	7	26		10	34		34												
	#10 WIRES NEUTRAL		1				2				3				1				2			3		3												
	#10 WIRES STREET LIGHT													(2)																						
	#8 WIRES STREET LIGHT																																			
	#8 WIRES (120 V SERVICE)																												2	3						
	#6 BSCW																																			
	INTERCONNECT 12C CABLE											1																1								

SHEET NOTES:

- 1 F/I PER GROUNDING LAYOUT DETAIL AND PROJECT SPECIFICATIONS SECTION 34 41 13.
- 2 (#) INDICATES EXISTING WIRE TO REMAIN

