

PED SIGNALS ACTIVATED AS PART OF CT 32 ON 2/3/09

DETAIL NOTES:

- ⬢ EX CONDUIT AND WIRING. R/C EX WIRING. F/I NEW WIRING AS NOTED.
- ⬢ EX CONDUIT AND WIRING. R/C EX CONDUIT AND WIRING. REPAIR SIDEWALK TO MATCH EX.
- ⬢ EX CONDUIT AND WIRING. R/C EX WIRING. CUT CONDUIT FLUSH TO PULL BOX WALL OR 12" DEPTH, CAP END(S). ABANDON CONDUIT IN PLACE.
- ⬢ EX CONDUIT AND 12/C TO REMAIN.
- ⬢ CHIP EX FOUNDATION CAREFULLY TO BRING CONDUIT INTO BASE OF STANDARD OR CONTROLLER CABINET AND REPAIR AFTER INSTALLATION.
- ⬢ ABANDON PULL BOX IN PLACE.
- ⬢ RETAIN EX SERVICE WIRES. SPLICE AND EXTEND TO NEW IC LOCATION. F/I 40A IN LINE FUSE AND FUSE HOLDER IN PULL BOX.

AS-BUILT

Date:

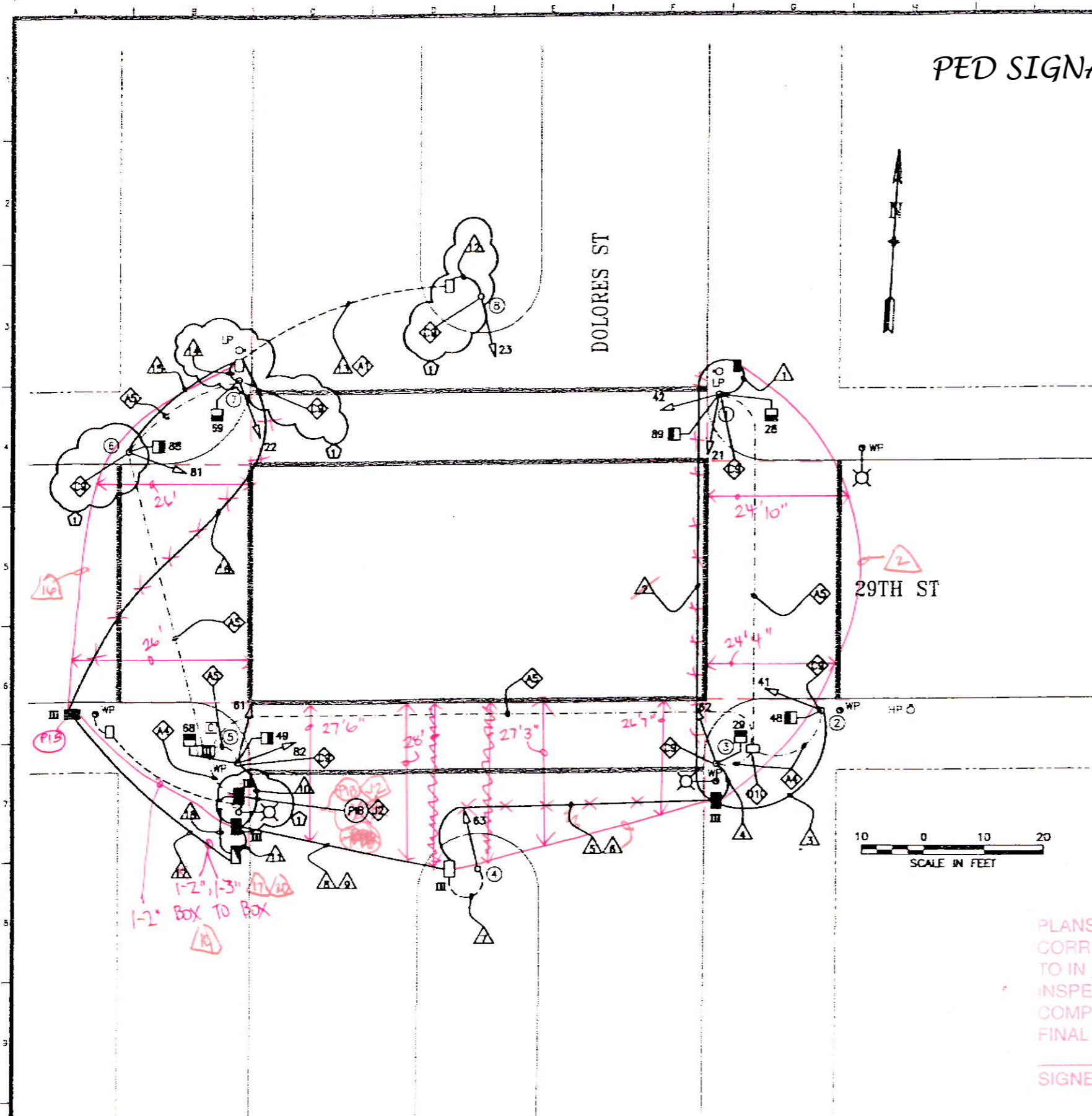
By:

NOTE:

THIS AUTOCAD DRAWING HAS BEEN REVISED AND REPLOTTED SUBSEQUENT TO INTERNAL ENGINEERING APPROVAL AND SIGN-OFF. FOR THOSE SIGNATURES, SEE THE DRAWING PLOTTED AND ISSUED PREVIOUSLY DURING BIDDING. THE SIGNED DRAWING REMAINS VALID EXCEPT FOR THE CHANGES ONLY AS CLEARLY MARKED ON THIS DRAWING AND ISSUED UNDER THIS LATEST REVISION NUMBER AS SHOWN IN THE TABLE OF REVISIONS LOCATED AT THE LOWER LEFT CORNER OF THE DRAWING. ALL ISSUED REVISIONS SUBSEQUENT TO PREVIOUSLY PLOTTED DRAWING DURING BIDDING REMAIN VALID UNLESS SUPERSEDED BY LATER ISSUED REVISIONS. CHECK ALL ISSUED REVISIONS OF THIS DRAWING.

PLANS ARE TO BE RETURNED WITH CORRECTIONS MADE AND CERTIFIED TO IN RED INK AND DATED BY THE INSPECTOR IN CHARGE UPON COMPLETION OF THE WORK BEFORE FINAL PAYMENT CAN BE MADE.

Sumathy Chinn 11/5/09
SIGNED-INSPECTOR



NO.	DATE	DESCRIPTION	BY	APP.
17	8/25/08	PCD #1: VARIOUS CHANGES BASED ON POLE LAYOUT	JS	SL
TABLE OF REVISIONS				
CHECK WITH TRACING TO SEE IF YOU HAVE LATEST REVISION				

REFERENCE INFORMATION
& FILE NO. OF SURVEYS



BUREAU OF ENGINEERING
DEPARTMENT OF PUBLIC WORKS
CITY AND COUNTY OF SAN FRANCISCO



DESIGNED:	DATE:	APPROVED:
GD/EF	10/07	SECTION MANAGER
DRAWN:	DATE:	DATE:
CXL	10/07	DEPUTY BUREAU MANAGER
CHECKED:	DATE:	DATE:
BC	10/07	CITY ENGINEER

SCALE:
AS SHOWN
SHEET OF SHEETS
65 of 78

CONTRACT 32
TRAFFIC SIGNAL MODIFICATIONS

29TH ST & DOLORES ST

SPECIFICATION NO.
0985J
DRAWING NO.
E-20.0
FILE NO.
87,531
REV. NO.
1

CONDUIT AND WIRING SCHEDULE (FURNISH AND INSTALL CONDUIT AND WIRES)																										
CONDUIT RUN NUMBER	1	2	3	4	5	6	7	8	9	10	11	12	13	14	15	16	17	18	19	20	21	22	23	24	25	26
CONDUIT SIZE (INCH)	2	2	2	2	2	2	2	2	2	2	3	2	2	2	2	2	3	2	2	2	2	2	2	2	2	2
CONDUIT SIZE (mm)	53	53	53	53	53	53	53	53	53	53	77	53	53	53	53	53	77	53	53	53	53	53	53	53	53	53
NOTES																										
SIGNAL 42 (EX)	3	3			3			3			3															
SIGNAL 21 (EX)	3	3			3			3			3															
SIGNAL 80	2	2			2			2			2															
SIGNAL 28	2	2			2			2			2															
SIGNAL 41 (EX)			3		3					3	3															
SIGNAL 48			2		2					2	2															
SIGNAL 62 (EX)				3	3					3	3															
SIGNAL 29				2	2					2	2															
SIGNAL 63 (EX)							3			3	3															
SIGNAL 62 (EX)											3	3														
SIGNAL 61 (EX)											3	3														
SIGNAL 40											2	2														
SIGNAL 60											2	2														
SIGNAL 23 (EX)												3	3				3	3								
SIGNAL 22 (EX)														3			3	3								
SIGNAL 60														2			2	2								
SIGNAL 61 (EX)																3	3	3								
SIGNAL 60																2	2	2								
#14 NEUTRAL	3		2	2			1			3	1		2	2												
#14 SPARE		3			3			3			3	3				3	3									
TOTAL #14 WIRES	10	13	5	5	23		4	13	13	13	36	3	8	5	5	18	18									
#10 WIRES NEUTRAL		1			2			1	1		3		1			1	1									
#10 WIRES STREET LIGHT																										
#6 WIRES STREET LIGHT																										
#6 WIRES (120 V SERVICE)																			2							
#6 BSCW																										
INTERCONNECT 12C CABLE																										
DLW (DETECTOR LOOP WIRE)																										
DLC (DETECTOR LED-IN-CABLE)																										
PRE-EMPTION																										

SHEET NOTE:

- GROUNDING WIRES NOT INCLUDED IN THIS WIRING SCHEDULE. FOR REQUIREMENTS SEE DETAIL 

PLANS ARE TO BE RETURNED WITH
CORRECTIONS MADE AND CERTIFIED
TO IN RED INK AND DATED BY THE
INSPECTOR IN CHARGE UPON
COMPLETION OF THE WORK BEFORE
FINAL PAYMENT CAN BE MADE.

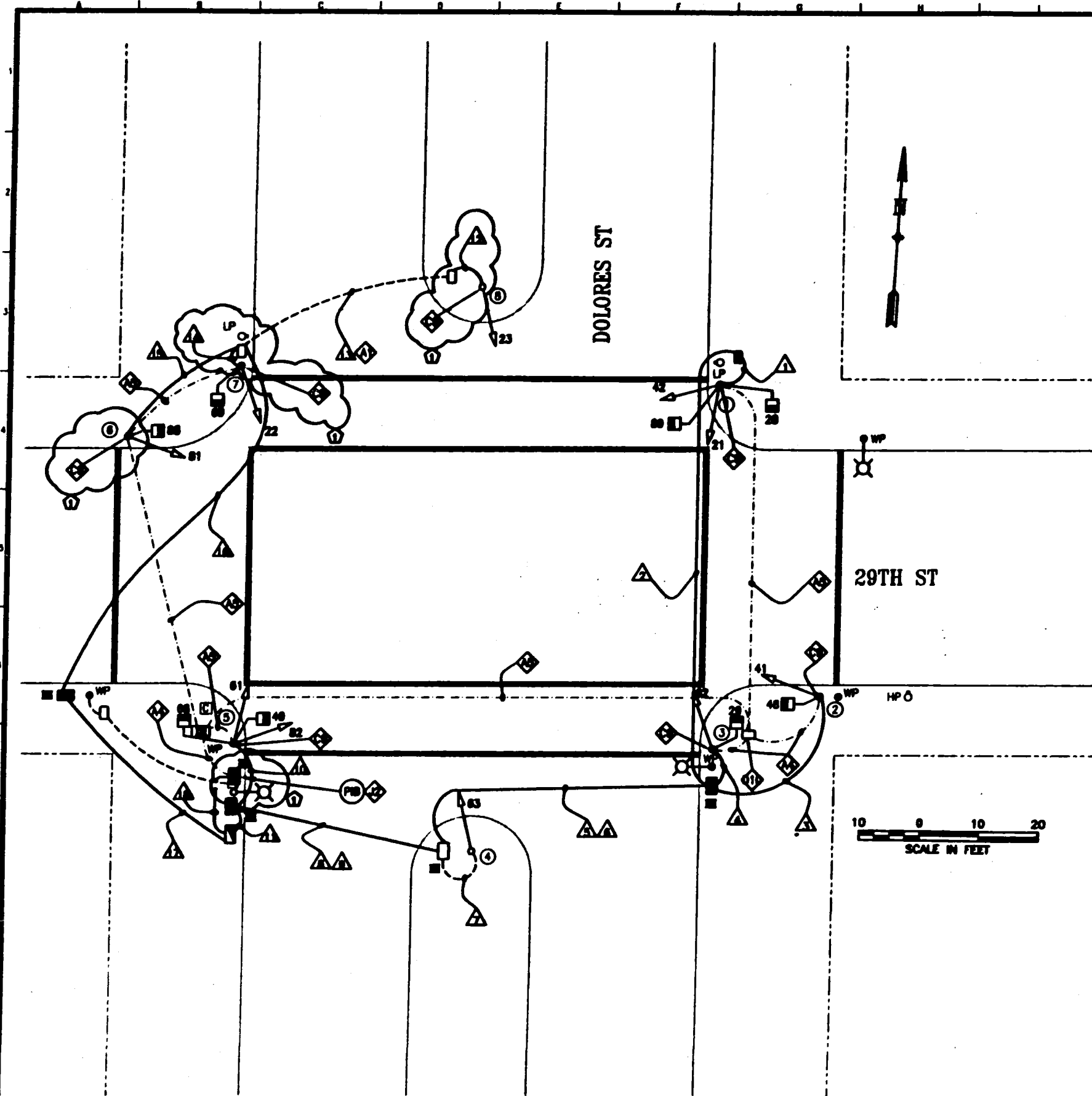
Scimitry Chen 11/5/09
SIGNED INSPECTOR

AS-BUILT

Date:

By:

11/8/25/08 PCD #1: VARIOUS CHANGES BASED ON POLE LAYOUT NO. DATE DESCRIPTION BY APP. TABLE OF REVISIONS CHECK WITH TRACING TO SEE IF YOU HAVE LATEST REVISION	REFERENCE INFORMATION & FILE NO. OF SURVEYS	 BUREAU OF ENGINEERING DEPARTMENT OF PUBLIC WORKS CITY AND COUNTY OF SAN FRANCISCO		DESIGNED: DATE: EF 10/07 DRAWN: DATE: CXL 10/07 CHECKED: DATE: BC 10/07	APPROVED: DATE: SECTION MANAGER DATE: DEPUTY BUREAU MANAGER DATE: CITY ENGINEER DATE:	SCALE: NONE SHEET OF SHEETS: 67 of 78	CONTRACT 32 TRAFFIC SIGNAL MODIFICATIONS 29TH ST & DOLORES ST SCHEDULE	SPECIFICATION NO. 09B5J DRAWING NO. E-20.2 FILE NO. 87,533 REV. NO.
--	--	---	---	---	---	--	---	--



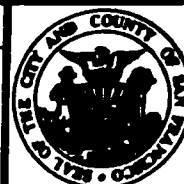
DETAIL NOTES:

- ① EX CONDUIT AND WIRING. R/C EX WIRING. F/A NEW WIRING AS NOTED.
- ② EX CONDUIT AND WIRING. R/C EX CONDUIT AND WIRING. REPAIR SIDEWALK TO MATCH EX.
- ③ EX CONDUIT AND WIRING. R/C EX WIRING. CUT CONDUIT FLUSH TO PULL BOX WALL OR 12" DEPTH. CAP END(S). ABANDON CONDUIT IN PLACE.
- ④ EX CONDUIT AND 12/C TO REMAIN.
- ⑤ CHIP EX FOUNDATION CAREFULLY TO BRING CONDUIT INTO BASE OF STANDARD OR CONTROLLER CABINET AND REPAIR AFTER INSTALLATION.
- ⑥ ABANDON PULL BOX IN PLACE.
- ⑦ RETAIN EX SERVICE WIRING. SPLICE AND EXTEND TO NEW IC LOCATION. F/A 40A IN LINE FUSE AND FUSE HOLDER IN PULL BOX.

PED SIGNALS ACTIVATED ON 2/3/09 AT 12:40PM
 ATTENDED BY: GERADINE DE LEON (CDPT),
 FERDI LUMBAD (CDPT SIGNAL SHOP), AND BEN WU
 (CDPW)

NOTE:
 THIS AUTOCAD DRAWING HAS BEEN REVISED AND REPLOTTED SUBSEQUENT TO INTERNAL ENGINEERING APPROVAL AND SIGN-OFF. FOR THOSE SIGNATURES, SEE THE DRAWING PLOTTED AND ISSUED PREVIOUSLY DURING BIDDING. THE SIGNED DRAWING REMAINS VALID EXCEPT FOR THE CHANGES ONLY AS CLEARLY MARKED ON THIS DRAWING AND ISSUED UNDER THIS LATEST REVISION NUMBER AS SHOWN IN THE TABLE OF REVISIONS LOCATED AT THE LOWER LEFT CORNER OF THE DRAWING. ALL ISSUED REVISIONS SUBSEQUENT TO PREVIOUSLY PLOTTED DRAWING DURING BIDDING REMAIN VALID UNLESS SUPERSEDED BY LATER ISSUED REVISIONS. CHECK ALL ISSUED REVISIONS OF THIS DRAWING.

REFERENCE INFORMATION & FILE NO. OF SURVEYS			
NO.	DATE	DESCRIPTION	BY APP.
①	8/26/08	POD #1: VARIOUS CHANGES BASED ON POLE LAYOUT	JS SL
TABLE OF REVISIONS			
CHECK WITH TRACING TO SEE IF YOU HAVE LATEST REVISION			



BUREAU OF ENGINEERING **DEPARTMENT OF PUBLIC WORKS** **CITY AND COUNTY OF SAN FRANCISCO**



DESIGNED: DATE: 10/07	APPROVED:	SCALE: AS SHOWN	CONTRACT 32 TRAFFIC SIGNAL MODIFICATIONS 29TH ST & DOLORES ST	SPECIFICATION NO. 0985J Drawing No. E-20.0 FILE NO. 87,531 REV. NO. 1
DRAWN: DATE: 10/07	SECTION MANAGER: DATE:	SHEET OF SHEETS: 65 of 78		
CHECKED: DATE: 10/07	DEPUTY BUREAU MANAGER: DATE:			
BC	CITY ENGINEER: DATE:			

URNISH	A	
A	A	A
2	2	2
S	S	S
	E	



- 

Working Path: V:\0000\Contract\12 Traffic Control\12