

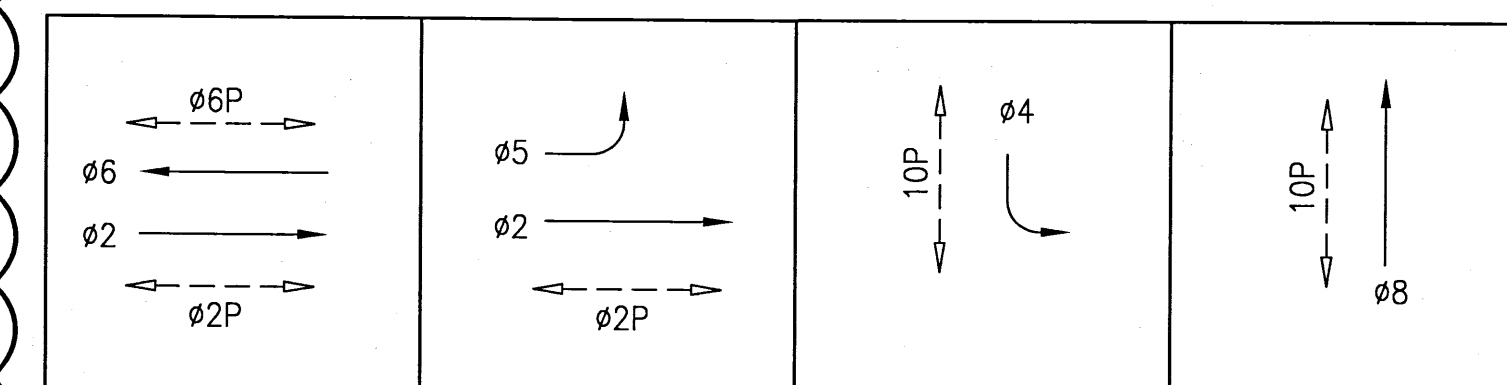
POLE AND EQUIPMENT SCHEDULE											
POLE No.	TYPE OF POLE	LUMINAIRE VOLTAGE/ WATTAGE	VEHICLE SIGNAL					PEDESTRIAN SIGNAL			REMARKS
			No.	TYPE	MOUNTING	VISORS	LOUVERS	No.	TYPE	MOUNTING	
①	CITY STANDARD STREET LIGHT	A2 145 9	52 65 81	3S12"LA 3S12" 3S12"	SV-3-TA	T T T		69	1S-COUNT	SP-1	APS-2W BACKPLATE BACKPLATE BACKPLATE
②	26-4-100 W/ 40' MAST ARM AND 10' LA	A2 145 9	21 42 24 27 54	3S12" 3S12"LA 3S12" 3S12"LA 3S12"LA	SV-2-TC MAS MAS MAS	T T T T T		28	1S-COUNT	SP-1	APS-2W BACKPLATE BACKPLATE BACKPLATE BACKPLATE BACKPLATE
③	1-A (15')		25 41 86	3S12" 3S12"LA 3S12"	SV-3-TA	T T LA		108 29	1S-COUNT 1S-COUNT	SP-1 SP-1	APS-2W x2 BACKPLATE BACKPLATE BACKPLATE
④	26-3-100 W/ 40' MAST ARM AND 6' LA	A2 145 9	61 82 64 67	3S12" 3S12" 3S12" 3S12"	SV-2-TA MAS MAS	T T T T		109 88	1S-COUNT 1S-COUNT	SP-1 SP-1	APS-2W x2 BACKPLATE BACKPLATE BACKPLATE

SHEET NOTES:

- ABANDON EXISTING CONDUIT AND WIRING, CUT EXISTING CONDUIT TO PULLBOX WALL AND CAP ENDS. PRIOR TO REMOVING OF EXISTING CABLES IN EXISTING CONDUIT, FIELD VERIFY AND MAINTAIN SERVICES TO STREETLIGHTS AND TRAFFIC CONTROLLER.
- INSTALL CITY FURNISHED ONE SECTION LED PEDESTRIAN COUNTDOWN SIGNAL MODULE IN CONTRACTOR FURNISHED ONE SECTION PEDESTRIAN SIGNAL HOUSING.
- CITY FORCES TO INSTALL CITY FURNISHED APS PUSH BUTTONS ON POLES (PER ADA) AS SHOWN ON INTERSECTION DRAWING AND AS INDICATED IN POLE & EQUIPMENT SCHEDULE. CONTRACTOR TO F/I WIRING AS SHOWN IN THE CONDUIT AND WIRING SCHEDULE.
- R/C EXISTING GUARD POSTS ADJACENT TO EXISTING CABINET. F/I NEW GUARD POSTS ADJACENT TO NEW CABINET.
- REMOVE CONCRETE DEBRIS FROM PULL BOX. CLEAN CONDUITS AND ANY REMAINING WIRES.
- BRING NEW CONDUITS INTO EXISTING PULL BOX. CONTRACTOR SHALL BE CAREFUL TO AVOID DAMAGE TO EXISTING PULL BOX.
- CONSTRUCT TYPE 332 FOUNDATION TO ELEVATION OF 18-INCH HEIGHT ABOVE GRADE.
- SPLICE NEW STREET LIGHT TO EXISTING STREETLIGHT SERVICE. PROVIDE 10A FUSE AND FUSE HOLDER FOR NEW STREETLIGHT. MAINTAIN EXISTING STREET LIGHT CIRCUIT.
- SEE LIGHTING FIXTURE SCHEDULE ON E-0.1

SWITCHOVER HELD 11/21/2019
DARK @ 9:16 AM; 3-COLOR @ 11:03 AM
J. HORBOSTEL (SFMTA-SSD); E.LEE (SFPW-ICM)
J. OLIVARES, A. ROBERTSON, M. TODD (MTA SIGNAL SHOP)

PHASE DIAGRAM



NOTE:
THIS AUTOCAD DRAWING HAS BEEN REVISED AND REPLOTTED SUBSEQUENT TO INTERNAL ENGINEERING APPROVAL AND SIGN-OFF. FOR THOSE SIGNATURES, SEE THE DRAWING PLOTTED AND ISSUED PREVIOUSLY DURING BIDDING. THE SIGNED DRAWING REMAINS VALID EXCEPT FOR THE CHANGES ONLY AS CLEARLY MARKED ON THIS DRAWING AND ISSUED UNDER THIS LATEST REVISION NUMBER AS SHOWN IN THE TABLE OF REVISIONS LOCATED AT THE LOWER LEFT CORNER OF THE DRAWING. ALL ISSUED REVISIONS SUBSEQUENT TO PREVIOUSLY PLOTTED DRAWING DURING BIDDING REMAIN VALID UNLESS SUPERSEDED BY LATER ISSUED REVISIONS. CHECK ALL ISSUED REVISIONS OF THIS DRAWING.

TABLE OF REVISIONS				REFERENCE INFORMATION & FILE NO. OF SURVEYS		BUREAU OF DESIGN & ENGINEERING CITY & COUNTY OF SAN FRANCISCO SAN FRANCISCO PUBLIC WORKS 30 VAN NESS AVENUE, 5TH FLOOR SAN FRANCISCO, CA 94102 - 6028		Section Mgr: PHILIP THWIN Deputy Bureau Mgr: IQBALBHAI DHAPA Bureau Mgr: PATRICK RIVERA		DESIGNED: DATE: JH/CMF 5/2017 DRAWN: DATE: JH/CMF 5/2017 CHECKED: DATE: GD/SL 5/2017		SCALE: AS SHOWN SHEET OF SHEETS 18 OF 63		CONTRACT 34 - TRAFFIC SIGNAL MODIFICATIONS ALEMANY BLVD, CRESCENT AVE, AND PUTNAM ST. TRAFFIC SIGNAL WORK POLE AND EQUIPMENT SCHEDULE		CONTRACT NO. 2805J DRAWING NO. E-5.0 FILE NO. 109,554 REV. NO. 1	
--------------------	--	--	--	---	--	---	--	---	--	--	--	---	--	--	--	---	--

CONDUIT AND WIRING SCHEDULE (FURNISH AND INSTALL CONDUIT AND WIRES)																													
CONDUIT RUN NUMBER		1	2	3	4	5	6	7	8	9	10	11	12	13	14	15	16	17	18	19	20	21	22	23	24	25	26	27	28
CONDUIT SIZE (INCH)		2	2	2	2	2	2	2	2	2	2	2	2	3	2	2	2	2	2	2	2	2	2	2	3	2	2	2	3
		GRS			SP		GRS				SP							SP		GRS	SP			SP		SP	SP		
NOTES																													
	VEHICLE SIGNAL 21	3		3				3			3			3															
	VEHICLE SIGNAL 24	3		3				3			3			3															
	VEHICLE SIGNAL 27	3		3				3			3			3															
	VEHICLE SIGNAL 42	3		3				3			3			3															
	VEHICLE SIGNAL 54	3		3				3			3			3															
	PED SIGNAL 28	2		2				2			2			2															
	APS XING FWY RAMP ON POLE 2	2		2				2			2			2															
	VEHICLE SIGNAL 52					3			3			3		3															
	VEHICLE SIGNAL 65					3			3			3		3															
	VEHICLE SIGNAL 81					3			3			3		3															
	PED SIGNAL 69					2			2			2		2															
	APS XING CRESCENT ON POLE 1					2			2			2		2															
	VEHICLE SIGNAL 25														3	3						3			3				
	VEHICLE SIGNAL 41														3	3						3			3				
	VEHICLE SIGNAL 86														2	2						2			2				
	PED SIGNAL 29														2	2						2			2				
	PED SIGNAL 108														2	2						2			2				
	APX XING FWY RAMP ON POLE 3														2	2						2			2				
	APS XING ALEMANY ON POLE 3																												
	VEHICLE SIGNAL 61																		3				3		3				
	VEHICLE SIGNAL 64																		3				3		3				
	VEHICLE SIGNAL 67																		3				3		3				
	VEHICLE SIGNAL 82																		3				3		3				
	PED SIGNAL 109																		2				2		2				
	PED SIGNAL 68																		2				2		2				
	APS XING CRESCENT ON POLE 4																		2				2		2				
	APS XING ALEMANY ON POLE 4																		2				2		2				
	#14 NEUTRAL	5				2									3				5										
	#14 SPARE			3				3			3			3								3			3				
	TOTAL #14 WIRES	24		22		15		22	13		22	13		35	20	20		25			20	20		40					
	#10 WIRES NEUTRAL			1				1	1		1	1		2				1				1	1		2				
	#10 WIRES STREET LIGHT			2				2													2								
	#8 WIRES STREET LIGHT																												
	#8 WIRES (120 V SERVICE)													2													2	3	
	#6 BSCW																												
	INTERCONNECT 12C CABLE																												

CRESCENT AVE

PUTNAM ST

TO E-5.0

SEE SHEET E-5.0 FOR DETAILS

POWER SERVICE DETAIL

NOT TO SCALE

NOTE: THIS AUTOCAD DRAWING HAS BEEN REVISED AND REPLOTTED SUBSEQUENT TO INTERNAL ENGINEERING APPROVAL AND SIGN-OFF. FOR THOSE SIGNATURES, SEE THE DRAWING PLOTTED AND ISSUED PREVIOUSLY DURING BIDDING. THE SIGNED DRAWING REMAINS VALID EXCEPT FOR THE CHANGES ONLY AS CLEARLY MARKED ON THIS DRAWING AND ISSUED UNDER THIS LATEST REVISION NUMBER AS SHOWN IN THE TABLE OF REVISIONS LOCATED AT THE LOWER LEFT CORNER OF THE DRAWING. ALL ISSUED REVISIONS SUBSEQUENT TO PREVIOUSLY PLOTTED DRAWING DURING BIDDING REMAIN VALID UNLESS SUPERSEDED BY LATER ISSUED REVISIONS. CHECK ALL ISSUED REVISIONS OF THIS DRAWING.

SHEET NOTES:

1 F/I PER GROUNDING LAYOUT DETAIL AND PROJECT SPECIFICATIONS SECTION 34 41 13.

2 ABANDON EXISTING CONDUIT AND REMOVE EXISTING WIRING, CUT EXISTING CONDUIT TO PULLBOX WALL AND CAP ENDS. PRIOR TO REMOVING OF EXISTING CABLES IN EXISTING CONDUIT, FIELD VERIFY AND MAINTAIN SERVICES TO STREETLIGHTS

3 CONTROLLER SERVICE POINT IS A PG&E WOOD POLE LOCATED AT THE SOUTHWEST CORNER OF CRESCENT AVE. AND PUTNAM ST. CONSTRUCTION OF (N) PG&E SERVICE RISER REQUIRES TS SHUTDOWN AND DEMOLITION OF (E) SERVICE RISER. COORDINATE WITH PG&E THROUGH SFPUC FOR DEACTIVATION OF (E) SERVICE AND ACTIVATION OF (N) SERVICE. R/C (E) RISER ON WOOD POLE. COORDINATE WITH SFPD FOR TRAFFIC CONTROL DURING TS SHUTDOWN. CONTRACTOR TO FIELD VERIFY AND MAINTAIN SERVICES TO STREETLIGHTING.

4 F/I 40A INLINE FUSE AND FUSE HOLDER FOR TRAFFIC SIGNAL SERVICE DISCONNECT IN FIRST PULL BOX NEXT TO THE NEW PG&E SERVICE POINT.

8/2018	PCO #2	MISCELLANEOUS ELECTRICAL REVISIONS	JH/ST	GD/SL
NO.	DATE	DESCRIPTION	BY	APP.
TABLE OF REVISIONS				

REFERENCE INFORMATION & FILE NO. OF SURVEYS

BUREAU OF DESIGN & ENGINEERING
CITY & COUNTY OF SAN FRANCISCO
SAN FRANCISCO PUBLIC WORKS
30 VAN NESS AVENUE, 5TH FLOOR
SAN FRANCISCO, CA 94102 - 6028

Section Mgr: PHILIP THWIN
Deputy Bureau Mgr: IQBALBHAI DHAPA
Bureau Mgr: PATRICK RIVERA

DESIGNED: JH/CMF
DATE: 5/2017
DRAWN: JH/CMF
DATE: 5/2017
CHECKED: GD/SL
DATE: 5/2017

SCALE: NONE
SHEET OF SHEETS 19 OF 63

CONTRACT 34 - TRAFFIC SIGNAL MODIFICATIONS
ALEMANY BLVD, CRESCENT AVE, AND PUTNAM ST.
CONDUIT AND WIRING SCHEDULE