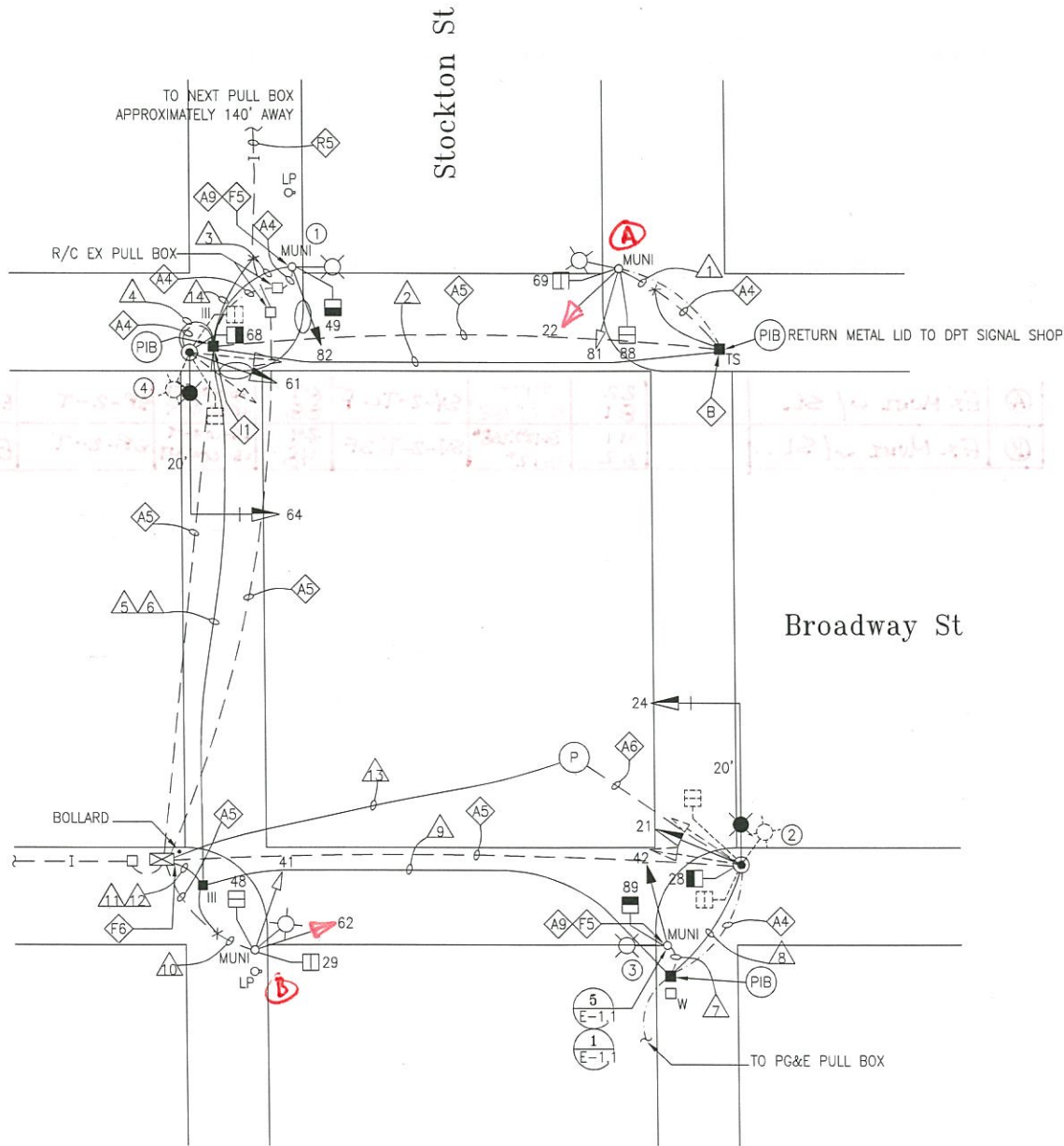
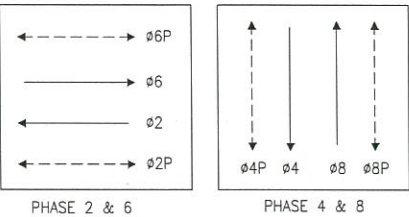


UPDATED SIGNALS 22 & 62 TO
3512" PER FIELD CHECK APR 2008
- J. HORNOSTEL



PHASE DIAGRAM



PHASE SEQUENCE

G	Y	R
R		G
WM	FRH	RH
RH	WM	FRH

BROADWAY ST
STOCKTON ST
PED XING STOCKTON
PED XING BROADWAY

DETAIL NOTES:

- A1 EX CONDUIT AND WIRING. R/C EX WIRING. F/I NEW WIRING AS NOTED.
- A4 EX CONDUIT AND WIRING. R/C EX WIRING AND CONDUIT. REPAIR SIDEWALK TO MATCH EX.
- A5 EX CONDUIT AND WIRING. R/C EX WIRING. CUT CONDUIT FLUSH TO PULL BOX WALL OR 12" DEPTH, CAP OR DUCT SEAL END(S).
- A6 EX CONDUIT AND IC SERVICE WIRES. R/C EX WIRING AFTER CONNECTION OF NEW SERVICE POINT TO NEW OR EX IC. CUT CONDUIT APPROX 2' FROM PULL BOX AND R/C CUT PORTION. ABANDON REMAINING CONDUIT IN PLACE.
- A9 R/C EX EXTERNAL CONDUIT AND WIRING. F/I NEW EXTERNAL CONDUIT AND WIRING AS NOTED.
- A18 R/C EX WIRING AND CONDUIT. CUT CONDUIT 1 TO 2 FEET OR AS REQUIRED TO MAKE ROOM FOR INTERCEPTION. ABANDON CONDUIT IN PLACE.
- B SPLICE NEW WIRING TO EX SL WIRING TO MAINTAIN SL CIRCUIT.
- C1 INTERCEPT EX CONDUIT AND EXTEND TO NEW LOCATION AS SHOWN. CUT CONDUIT AT BOTH ENDS AS APPLICABLE IN ORDER NOT TO INTERFERE WITH THE POURING OF NEW FOUNDATION AND/OR INSTALLATION OF NEW PULL BOX AND CONDUITS. ABANDON REMAINING CONDUIT IN PLACE.
- F5 SIGNALS SHALL USE NEW EXTERNAL CONDUIT. SURFACE MOUNTED CONDUIT SHALL BE INSTALLED ON THE SIDE OPPOSITE THE ROADWAY OR INTERSECTION. SL WIRING SHALL USE THE SAME EXTERNAL CONDUIT.
- F6 R/C TWO (2) EX EXTERNAL CONDUITS AND WIRING. EX CONDUIT WITH 12/C TO REMAIN. NEW CONDUITS TO CONTROLLER SHALL BE EXTERNAL WITH TYPE "LB" THROUGH CONTROLLER CABINET.
- R5 PULL OUT EX 12/C TO NEXT NEAREST PULL BOX ALONG PATHWAY/SIDEWALK. RE-PULL TO NEW PULL BOX LOCATION AFTER MODIFICATION OF CONDUIT.
- I1 EXTEND 12/C INTERCONNECT. SPLICE TO EX 12/C TO MAINTAIN INTERCONNECT SYSTEM.

AS BUILT

NO.	DATE	DESCRIPTION	BY	APP.
9/2001	PCO#8		BC	STL
0	4/2000	ISSUED FOR BID	BC	NKS
1	4/2000	DESCRIPTION	BY	APP.

TABLE OF REVISIONS
CHECK WITH TRACING TO SEE IF YOU HAVE LATEST REVISION

REFERENCE INFORMATION
& FILE NO. OF SURVEYS



BUREAU OF ENGINEERING
DEPARTMENT OF PUBLIC WORKS
CITY AND COUNTY OF SAN FRANCISCO



DESIGNED:	DATE:	APPROVED:
BC	6/2000	
DRAWN:	DATE:	SECTION MANAGER:
BC	6/2000	
CHECKED:	DATE:	DIVISION MANAGER:
NKS	6/2000	
		CITY ENGINEER:

SCALE:
1"=10'-0"
SHEET OF SHEETS
12 OF 37



CONTRACT 26 VARIOUS LOCATIONS
TRAFFIC SIGNAL MODIFICATIONS
BROADWAY AND STOCKTON STREETS TRAFFIC SIGNAL WORK

SPECIFICATION NO.
1987N
DRAWING NO.
E-5.0
FILE NO.
74,257
REV. NO.
1

[illegible]

POLE AND EQUIPMENT SCHEDULE									
POLE No.	TYPE OF POLE	LUMINAIRE (HPS)	VEHICLE SIGNAL			PEDESTRIAN SIGNAL			REMARKS
		VOLTAGE/WATTS	No.	TYPE	MOUNTING (F/I)	No.	TYPE	MOUNTING (F/I)	
①	EX SL (MUNI)		82	3S8"	SV-1-T	49	1S-IN	SP-1	EXTERNAL RISER
②	17-1-70 WITH 20' MAST AND 6' LUMINAIRE ARMS	120/150 W	21 24	3S12" 3S12"	SV-1-T MAS	28	1S-IN	SP-1	
③	EX SL (MUNI)		42	3S8"	SV-1-T	89	1S-IN	SP-1	EXTERNAL RISER
④	17-1-70 WITH 20' MAST AND 6' LUMINAIRE ARMS	120/200 W	61 64	3S12" 3S12"	SV-1-T MAS	68	1S-IN	SP-1	
⑤	EX MUNI w/ SL		22 81	3S12" 1S12" 2S8"	SV-2-T-SF	69 88	1S-COUNT 16-COUNT	SP-2-T	EXTERNAL RISER
⑥	EX MUNI w/ SL		41 62	3S12" 2S8" 3S12"	SV-2-T-SF	29 48	1S-COUNT 16-COUNT	SP-2-T	EXTERNAL RISER

W F/I WITH INTEGRAL BALLAST AND PHOTOELECTRIC CONTROL. F/I FUSE AND FUSE HOLDERS PER SPDPWSF #49,092.

				REFERENCE INFORMATION & FILE NO. OF SURVEYS		 <div style="text-align: center;"> BUREAU OF ENGINEERING DEPARTMENT OF PUBLIC WORKS CITY AND COUNTY OF SAN FRANCISCO </div>				DESIGNED: DATE:	APPROVED	SCALE:	CONTRACT 26 VARIOUS LOCATIONS		SPECIFICATION NO.
										BC 6/2000			NONE	TRAFFIC SIGNAL MODIFICATIONS	
								DRAWN: DATE:	SECTION MANAGER DATE:	SHEET OF SHEETS	BROADWAY AND STOCKTON STREETS SCHEDULE		DRAWING NO.		
								BC 6/2000	DIVISION MANAGER DATE:				13 OF 37	E-5.1	
								CHECKED: DATE:	CITY ENGINEER DATE:			FILE NO.			
								NKS 6/2000				74,258			
												REV. NO.			
												1			

FILE NAME: 1987ME05
DATE: 03/15/2000
ORIGIN: ELECTROAL
SCALE FACTOR:
PLOT SCALE:
EXTERNAL REFERENCES: XREF
FONTS USED: ROMANS, ROMANT
T:\T-E FILES\Official_Records\Signal_Inventory\As_Bulls\DWG\CT26(1987N)\1987N_E05.dwg, Layout1, 9/21/2007 10:29:18 AM,
CLEUNG2