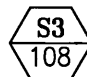
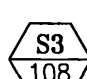
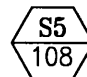
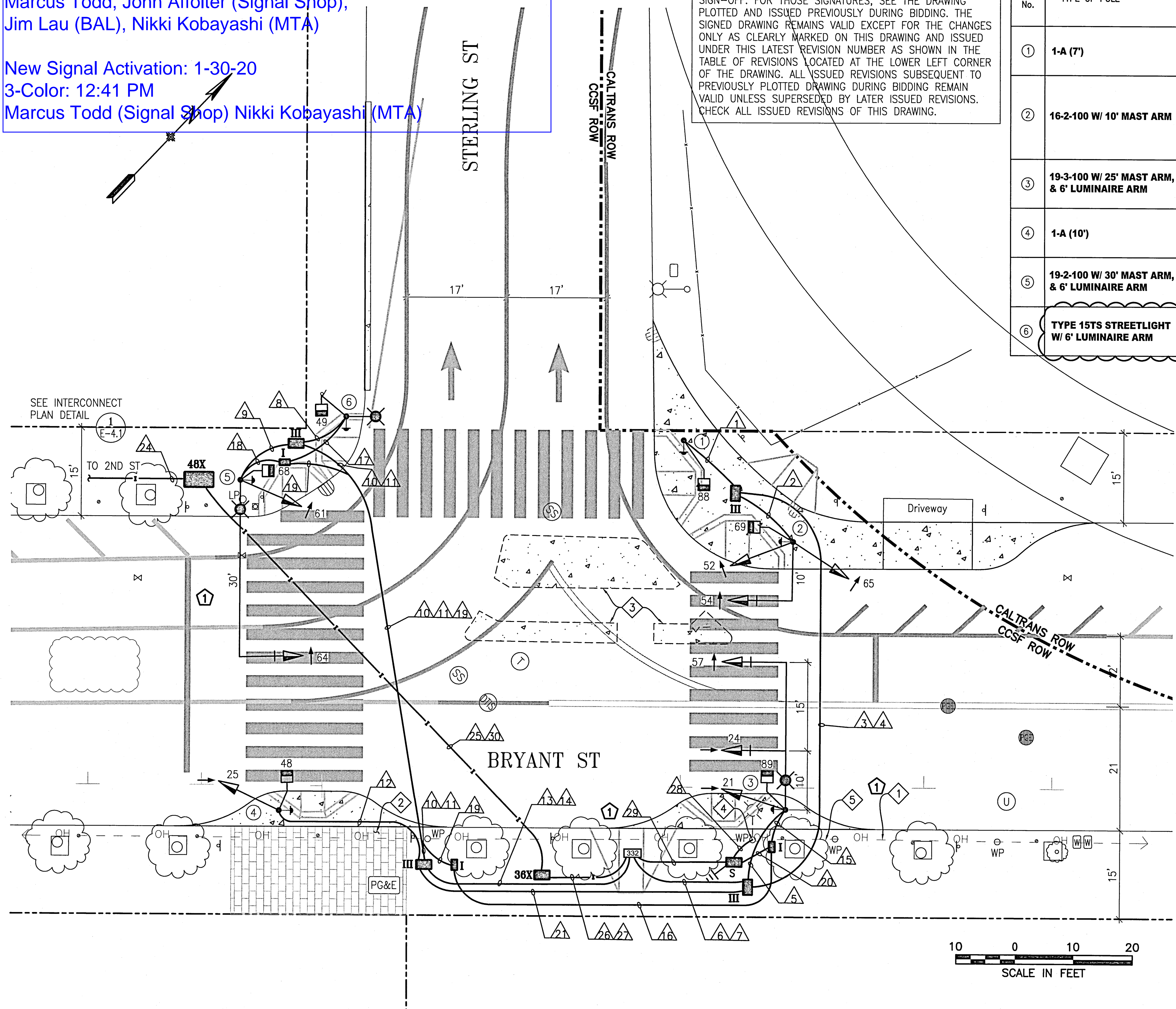


New Signal Flash: 1-29-20
Flash: 9:11 AM; 3-Color: 9:14 AM; Yellow/Yellow Flash: 12:53 PM
Marcus Todd, John Affolter (Signal Shop),
Jim Lau (BAL), Nikki Kobayashi (MTA)

New Signal Activation: 1-30-20
3-Color: 12:41 PM
Marcus Todd (Signal Shop) Nikki Kobayashi (MTA)

NOTE:
THIS AUTOCAD DRAWING HAS BEEN REVISED AND REPLOTTED
SUBSEQUENT TO INTERNAL ENGINEERING APPROVAL AND
SIGN-OFF. FOR THOSE SIGNATURES, SEE THE DRAWING
PLOTTED AND ISSUED PREVIOUSLY DURING BIDDING. THE
SIGNED DRAWING REMAINS VALID EXCEPT FOR THE CHANGES
ONLY AS CLEARLY MARKED ON THIS DRAWING AND ISSUED
UNDER THIS LATEST REVISION NUMBER AS SHOWN IN THE
TABLE OF REVISIONS LOCATED AT THE LOWER LEFT CORNER OF
THE DRAWING. ALL ISSUED REVISIONS SUBSEQUENT TO
PREVIOUSLY PLOTTED DRAWING DURING BIDDING REMAIN
VALID UNLESS SUPERSEDED BY LATER ISSUED REVISIONS.
CHECK ALL ISSUED REVISIONS OF THIS DRAWING.

POLE AND EQUIPMENT SCHEDULE											
POLE No.	TYPE OF POLE	LUMINAIRE VOLTAGE/ WATTAGE	VEHICLE SIGNAL					PEDESTRIAN SIGNAL			REMARKS
			No.	TYPE	MOUNTING	VISORS	LOUVERS	No.	TYPE	MOUNTING	
①	1-A (7')							88	1S-COUNT	TP-1-T	APS-2W
②	16-2-100 W/ 10' MAST ARM		52 65 54	3S12" LA 3S12" RA 3S12" LA	SV-1-T SV-1-T MAS	T T T		69	1S-COUNT	SP-1 (22")	APS-2W MOUNT SIGNAL 65 AT 13' ON STREET SIDE OF POLE BACKPLATE
③	19-3-100 W/ 25' MAST ARM, & 6' LUMINAIRE ARM		21 24 57	3S12" GSA 3S12" GSA 3S12" LA	SV-1-T MAS MAS	T T T		89	1S-COUNT	SP-1	APS-2W BACKPLATE
④	1-A (10')		25	3S12" GSA	TV-1-T	T		48	1S-COUNT	SP-1	APS-2W
⑤	19-2-100 W/ 30' MAST ARM, & 6' LUMINAIRE ARM		61 64	3S12" RA 3S12" RA	SV-1-T MAS	T T		68	1S-COUNT	SP-1	APS-2W BACKPLATE
⑥	TYPE 15TS STREETLIGHT W/ 6' LUMINAIRE ARM							49	1S-COUNT	SP-1	APS-2W



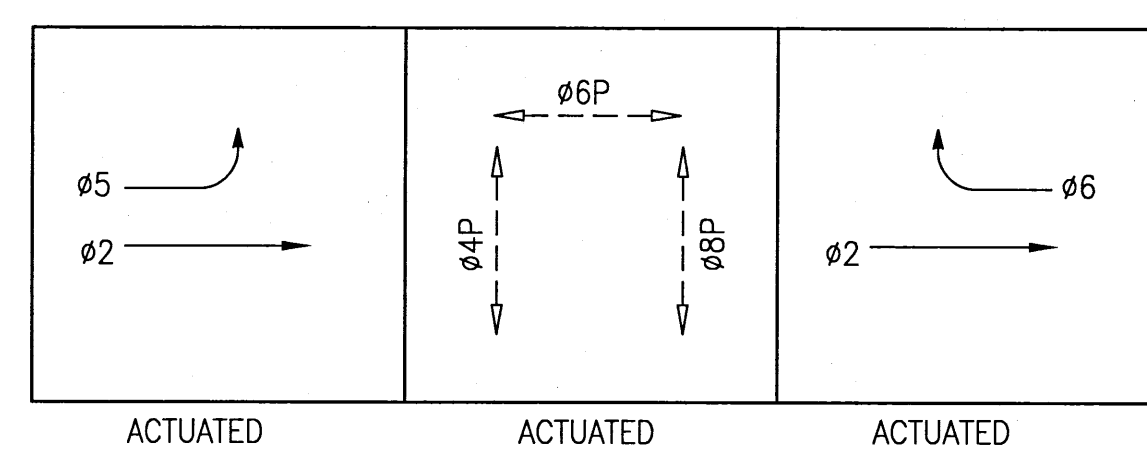
GENERAL NOTES:

1. CONTRACTOR SHALL COORDINATE WITH SFMTA METER SHOP TO REMOVE PARKING METER
2. MAINTAIN ALL CROSSWALKS AND PROVIDE TEMPORARY REFUGE ISLANDS AT ALL TIMES PRIOR TO ACTIVATION OF SIGNALS.
3. FINAL STRIPING IS SHOWN.

SHEET NOTES:

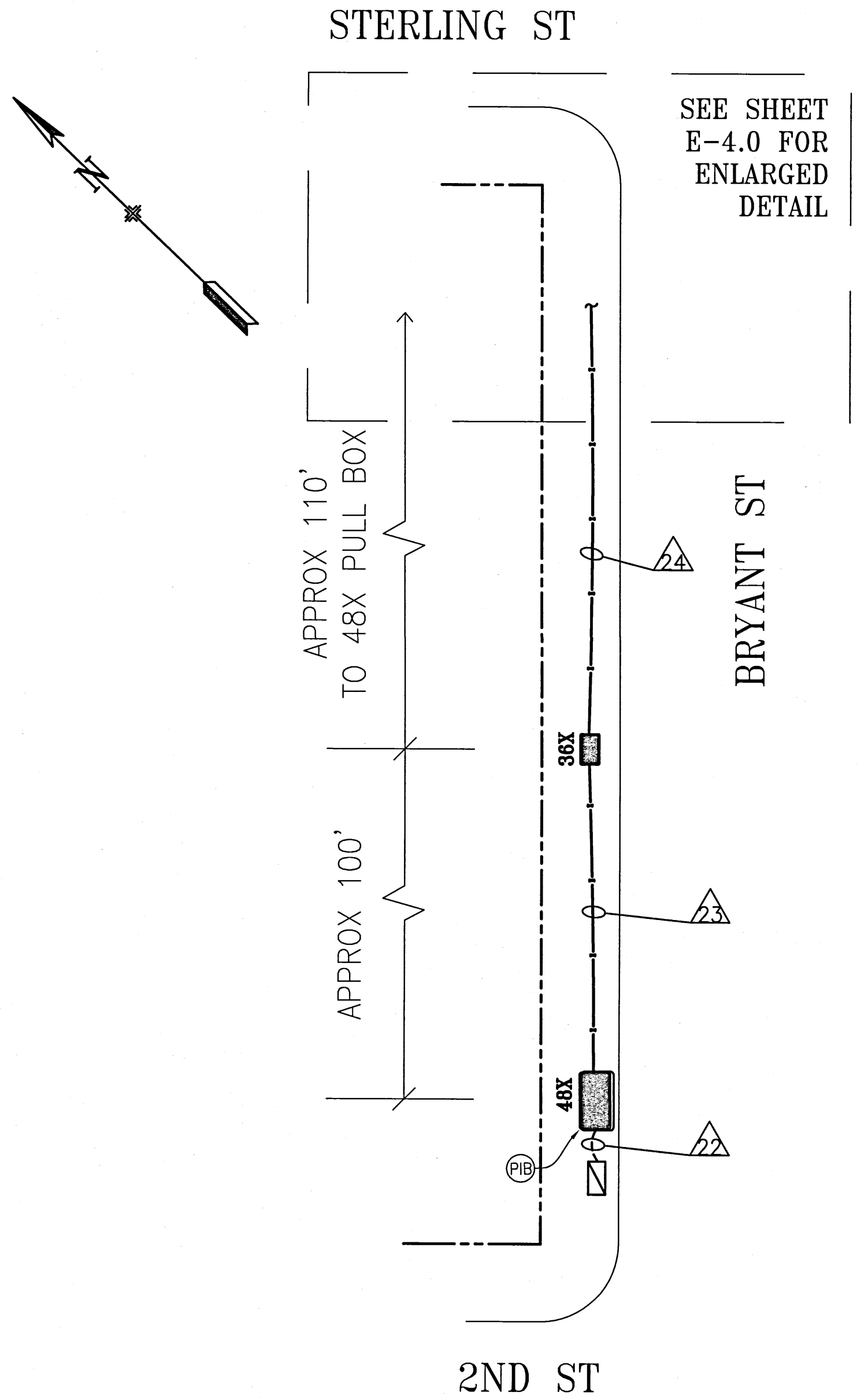
- ① EXERCISE CAUTION TO AVOID CONFLICT WITH OVERHEAD UTILITY WIRES AT THIS INTERSECTION.
- ② SALVAGE AND RESET EXISTING BRICK. EXISTING BRICK TO BE REMOVED, SALVAGED AND RE-INSTALLED. IF EXISTING BRICK IS DAMAGED AND UNABLE TO BE RE-INSTALLED, IT WILL BE REPLACE IN-KIND WITH NEW BRICK TO MATCH EXISTING IN DIMENSIONS, COLOR AND TEXTURE.
- ③ R/C EXISTING TRAFFIC ISLANDS, R/S TRAFFIC SIGNS, AND REPAVE ROADWAY FLUSH WITH SURROUNDING STREET AREA.
- ④ THE PG&E SERVICE POINT IS THE FIRST WOOD POLE EAST OF THE CONTROLLER CABINET. COORDINATE WITH PG&E THROUGH SFPUC FOR ACTIVATION OF SERVICE POINT.
- ⑤ CONTRACTOR TO TRIM TREE BRANCHES RESTRICTING VISIBILITY OF TRAFFIC SIGNALS UNDER BUF SUPERVISION. ①

PHASE DIAGRAM



<table><tr><td>5/2019</td><td>PCO 4- Revised Streetlight Pole #6</td><td>NK/ST</td><td>GD/SL</td></tr><tr><td>11/2018</td><td>PCO 1-Miscellaneous Pole Layout Changes</td><td>NK/ST</td><td>GD/SL</td></tr><tr><td>NO.</td><td>DATE</td><td>DESCRIPTION</td><td>BY</td><td>APP.</td></tr><tr><td colspan="5">TABLE OF REVISIONS</td></tr></table>	5/2019	PCO 4- Revised Streetlight Pole #6	NK/ST	GD/SL	11/2018	PCO 1-Miscellaneous Pole Layout Changes	NK/ST	GD/SL	NO.	DATE	DESCRIPTION	BY	APP.	TABLE OF REVISIONS					REFERENCE INFORMATION & FILE NO. OF SURVEYS						BUREAU OF DESIGN & ENGINEERING CITY & COUNTY OF SAN FRANCISCO SAN FRANCISCO PUBLIC WORKS 30 VAN NESS AVENUE, 5TH FLOOR SAN FRANCISCO, CA 94102 - 6028		Section Mgr: PHILIP THWIN Deputy Bureau Mgr: IOBALBHAI DHAPA Bureau Mgr: PATRICK RIVERA		Date: DESIGNED: DATE: NK/CMF 3/2018 DRAWN: DATE: NK/CMF 3/2018 CHECKED: DATE: GD/SL 3/2018				SCALE: 1"=10' SHEET OF SHEETS 16 OF 43		CONTRACT 64 NEW TRAFFIC SIGNALS BRYANT STREET & STERLING STREET TRAFFIC SIGNAL WORK POLE AND EQUIPMENT SCHEDULE		CONTRACT NO. 1000009385 DRAWING NO. E-4.0 FILE NO. 111,764 REV. NO. 2	
5/2019	PCO 4- Revised Streetlight Pole #6	NK/ST	GD/SL																																			
11/2018	PCO 1-Miscellaneous Pole Layout Changes	NK/ST	GD/SL																																			
NO.	DATE	DESCRIPTION	BY	APP.																																		
TABLE OF REVISIONS																																						

CONDUIT AND WIRING SCHEDULE (FURNISH AND INSTALL CONDUIT AND WIRES)																															
CONDUIT RUN NUMBER		1	2	3	4	5	6	7	8	9	10	11	12	13	14	15	16	17	18	19	20	21	22	23	24	25	26	27	28	29	30
CONDUIT SIZE (INCH)		2	2	2	2	2	3	2	2	2	2	2	2	3	2	2	2	2	2	2	2	2	2	1	1	2	2	2	3	2	2
					SP			SP				SP			SP	GRS	GRS	GRS	GRS	GRS	GRS	SP	EX					SP			SP
NOTES																															
	PED SIGNAL 88	2		2			2																								
	APS PPB XING STERLING ON POLE 1	2		2			2																								
	VEHICLE SIGNAL 52		3	3			3																								
	VEHICLE SIGNAL 54		3	3			3																								
	VEHICLE SIGNAL 65		3	3			3																								
	PED SIGNAL 69		2	2			2																								
	APS PPB XING BRYANT ON POLE 2		2	2			2																								
	VEHICLE SIGNAL 57					3	3																								
	VEHICLE SIGNAL 24					3	3																								
	VEHICLE SIGNAL 21					3	3																								
	PED SIGNAL 89					2	2																								
	APS PPB XING BRYANT ON POLE 3					2	2																								
	PED SIGNAL 49								2		2			2																	
	APS PPB XING STERLING ON POLE 6								2			2		2																	
	VEHICLE SIGNAL 61									3	3			3																	
	VEHICLE SIGNAL 64									3	3			3																	
	PED SIGNAL 68									2	2			2																	
	APS PPB XING BRYANT ON POLE 5									2	2			2																	
	VEHICLE SIGNAL 25												3	3																	
	PED SIGNAL 48												2	2																	
	APS PPB XING BRYANT ON POLE 4												2	2																	
	#14 NEUTRAL	1	4			4			1	3			2																		
	#14 SPARE			3			3				3			3																	
	TOTAL #14 WIRES	5	17	20		17	33		5	13	17		9	24																	
	#10 WIRES NEUTRAL			1			2				1			2																	
	#10 WIRES STREET LIGHT															2		2	2												
	#8 WIRES STREET LIGHT																2				2	2									
	#8 WIRES (120 V SERVICE)																												3	2	
	#8 AWG LOCATING WIRES																						2	2	2	2	2				



INTERCONNECT WIRING DETAIL
NOT TO SCALE

DETAIL NOTES:

- 1 F/I 4-2" HDPE CONDUIT WITH 3/8" PULL TAPE IN EACH CONDUIT. IN ONE OF THE EMPTY CONDUITS, INSTALL TWO #8 AWG STRANDED COPPER LOCATING WIRES (ONE WITH BLACK INSULATION AND THE OTHER WITH WHITE INSULATION). SEE SECTION 26-05-00 IN CONTRACT SPECIFICATIONS.



NO.		DATE	DESCRIPTION	BY	APP.
TABLE OF REVISIONS					
REFERENCE INFORMATION & FILE NO. OF SURVEYS					
BUREAU OF DESIGN & ENGINEERING CITY & COUNTY OF SAN FRANCISCO SAN FRANCISCO PUBLIC WORKS 30 VAN NESS AVENUE, 5TH FLOOR SAN FRANCISCO, CA 94102 - 6028					
Section Mgr:		PHILIP THWIN		Date: 4/23/18	
Deputy Bureau Mgr:		IQBALBHAI DHAPA		Date: 4/23/18	
Bureau Mgr:		PATRICK RIVERA		Date: 4/24/18	
DESIGNED:		DATE: 3/2018		NK/CMF	
DRAWN:		DATE: 3/2018		NK/CMF	
CHECKED:		DATE: 3/2018		GD/SL	
SCALE:		AS SHOWN		SHEET OF SHEETS	
		18 OF 43			
CONTRACT 64 NEW TRAFFIC SIGNALS					
BRYANT STREET & STERLING STREET CONDUIT AND WIRING SCHEDULE					
CONTRACT NO. 1000009385					
DRAWING NO. E-4.1					
FILE NO. 111,765					
REV. NO. 0					