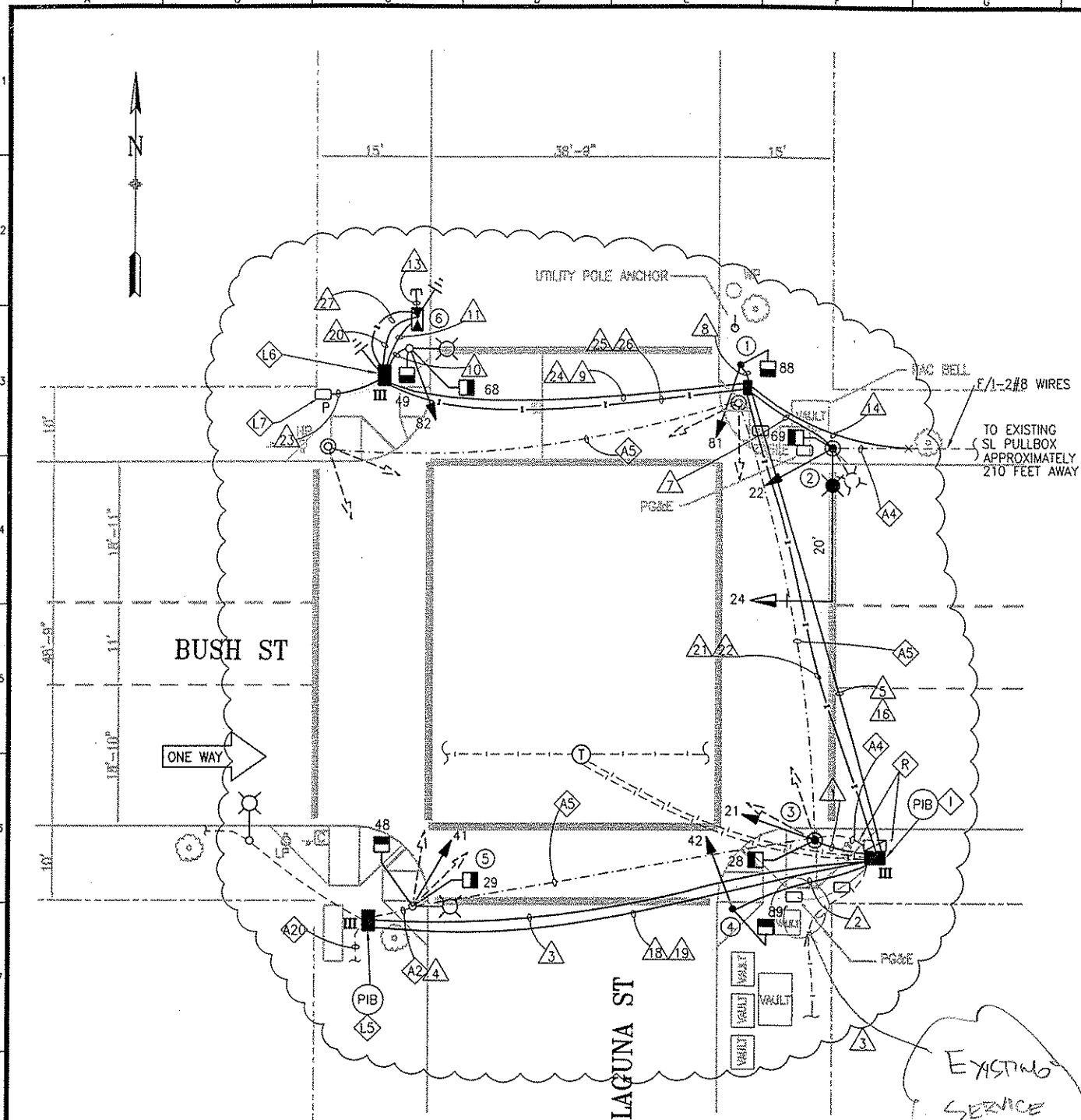



TURNIN: 2-19-04 @ 11:08 AM (3-COLOR)

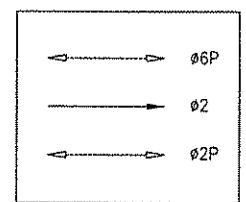


POLE AND EQUIPMENT SCHEDULE

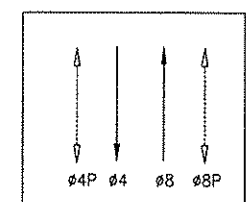
POLE No.	TYPE OF POLE	LUMINAIRE (HPS)	VEHICLE SIGNAL					PEDESTRIAN SIGNAL			REMARKS
		VOLTAGE/ WATTS	No.	TYPE	MOUNTING	VISORS	LOUVERS	No.	TYPE	MOUNTING	
①	1-A (10')		81	3S8"	TV-1	T		88	1S-COUNT	SP-1	
②	17B-1-70 20' MAST ARM 6' LUMINAIRE	 120V/ 150W	24 22	3S12" 3S8"	MAS SV-1-T	T T		69	1S-COUNT	SP-1	BACKPLATE
③	1-A (10')		21	3S8"	TV-1	T		28	1S-COUNT	SP-1	
④	1-A (10')		42	3S8"	TV-1	T		89	1S-COUNT	SP-1	
⑤	EX. SL		41	3S8"	SV-1-T	T		29 48	1S-COUNT 1S-COUNT	SP-1-SF (12") SP-1 (22")	
⑥	EX MARBELITE SL		82	3S8"	SV-1-T	T		49 68	1S-COUNT 1S-COUNT	SP-1 SP-1	

SERVICE POINT ACTIVATED ON 11/27/06

PHASE DIAGRAM:



PHASES 2, 2P, & 6P



PHASES 4, 8, 4P, & 8P

PHASE SEQUENCE:

G	Y	R			BUSH ST.
R		G	Y	R	LAGUNA ST
RH		WM	FRH	RH	PED XING BUSH ST.
WM	FRH		RH		PED XING LAGUNA ST

DETAIL NOTES:

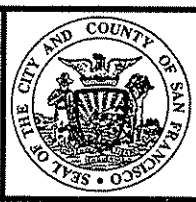
- ② EX CONDUIT AND WIRING. R/C EX TS WIRING. SL WIRING TO REMAIN. F/I NEW WIRING AS NOTED.
- ④ R/C EX WIRING AND CONDUIT. REPAIR SIDEWALK TO MATCH EX.
- ⑤ EX CONDUIT AND WIRING. R/C EX WIRING. CUT CONDUIT FLUSH TO PULL BOX WALL OR 12" DEPTH, CAP END(S). ABANDON CONDUIT IN PLACE.
- ②0 MAINTAIN EX PG&E SERVICE WIRING FOR SL.
- ②2 F/I WITH INTEGRAL BALLAST AND PHOTOELECTRIC CONTROL. F/I FUSE AND FUSE HOLDERS PER SPDWSF FILE #49,092.
- ① EXTEND 12/C INTERCONNECT TO NEW IC LOCATION. SPLICE TO EX 12/C TO MAINTAIN INTERCONNECT SYSTEM.
- ①5 CONTRACTOR SHALL COORDINATE WITH WALLY SUN OF HETCH HETCHY AT (415) 554-1873 TO DISCONNECT EX PG&E IC SERVICE WIRING. R/C EXISTING WIRING. CUT CONDUIT FLUSH TO PULL BOX WALL OR 12" DEPTH, CAP END(S). ABANDON CONDUIT IN PLACE.
- ①6 F/I IN-LINE FUSE HOLDER W/ 40A FUSE FOR IC SERVICE.
- ①7 COORDINATE WITH PG&E VIA WALLY SUN OF HETCH HETCHY AT (415) 554-1873 FOR CONNECTION WORK.
- ① R/C EX BOLLARDS

NOTE:  
THIS AUTOCAD DRAWING HAS BEEN REVISED AND REPLOTED SUBSEQUENT TO INTERNAL ENGINEERING APPROVAL AND SIGN-OFF. FOR THOSE SIGNATURES, SEE THE DRAWING PLOTTED AND ISSUED PREVIOUSLY DURING BIDDING. THE SIGNED DRAWING REMAINS VALID EXCEPT FOR THE CHANGES ONLY AS CLEARLY MARKED ON THIS DRAWING AND ISSUED UNDER THIS LATEST REVISION NUMBER AS SHOWN IN THE TABLE OF REVISIONS LOCATED AT THE LOWER LEFT CORNER OF THE DRAWING. ALL ISSUED REVISIONS SUBSEQUENT TO PREVIOUSLY PLOTTED DRAWING DURING BIDDING REMAIN VALID UNLESS SUPERSEDED BY LATER ISSUED REVISIONS. CHECK ALL ISSUED REVISIONS OF THIS DRAWING.

NO.	DATE	DESCRIPTION	BY	APP.
4/03	PCO-6: VARIOUS	TP	BC	
12/02	PCO-3: VARIOUS	TP	BC	
10/02	PCO-1: NEW SERVICE	TP	BC	

TABLE OF REVISIONS  
CHECK WITH TRACING TO SEE IF YOU HAVE LATEST REVISION

REFERENCE INFORMATION  
& FILE NO. OF SURVEYS



**BUREAU OF ENGINEERING**  
DEPARTMENT OF PUBLIC WORKS  
CITY AND COUNTY OF SAN FRANCISCO



DESIGNED: DATE: GD/NL/TP3/02  
DRAWN: DATE: JN/JS 3/02  
CHECKED: DATE: DSB/STL 3/02

APPROVED  
SECTION MANAGER DATE:  
DIVISION MANAGER DATE:  
CITY ENGINEER DATE:

SCALE:  
1" = 10'  
SHEET OF SHEETS  
29 OF 73

BUSH STREET TRAFFIC SIGNAL UPGRADE  
BUSH ST AND LAGUNA ST

SPECIFICATION NO. 0286J  
DRAWING NO. E-12.0  
FILE NO. 78221  
REV. NO. 3

EXTERNAL REFERENCES: 103422.dwg  
POINTS USED: 414-415 IF REMAINING CITY  
SCALE FACTOR: 120  
PLOT SCALE: 1"=1'  
ORIGIN: Scale & Text  
FILE NAME: 0286J.E12.0.dwg  
DATE: 2-19-04 10:43

CONDUIT AND WIRING SCHEDULE (FURNISH AND INSTALL CONDUIT AND WIRES)																											
CONDUIT RUN NUMBER	1	2	3	4	5	6	7	8	9	10	11	12	13	14	15	16	17	18	19	20	21	22	23	24	25	26	27
CONDUIT SIZE (INCH)	2	2	2		2		2	2	2	2	3		3	1.5		2		2	2	2	2	2	2	2	2	2	3
CONDUIT SIZE (mm)	53	53	53		53		53	53	53	53	77		77	41		53		53	53	53	53	53	53	53	53	53	77
NOTES				EX		NOT USED						NOT USED	SP	GRSC	NOT USED	SP	NOT USED	SP	SP								
VEH. SIGNAL 21	3				3						3																
PED. SIGNAL 28	2				2						2																
VEH. SIGNAL 42		3			3						3																
PED. SIGNAL 89		2			2						2																
PED. SIGNAL 29			2	2	2						2																
VEH. SIGNAL 41			3	3	3						3																
PED. SIGNAL 48			2	2	2						2																
VEH. SIGNAL 22			3			3		3		3		3															
VEH. SIGNAL 24							3		3		3																
PED. SIGNAL 69							2		2		2																
VEH. SIGNAL 81								3	3		3																
PED. SIGNAL 88								2	2		2																
PED. SIGNAL 49										2	2																
PED. SIGNAL 68										2	2																
VEH. SIGNAL 82										3	3																
#14 NEUTRAL	2	2		3			3	2		3																	
#14 SPARE			3		3				3		3																
TOTAL #14 WIRES	7	7	10	10	20		11	7	16	10	40													17			
#10 WIRES NEUTRAL			1	3	2				1		1	3															
#10 WIRES STREET LIGHT							2																				
#8 WIRES STREET LIGHT																											
#8 WIRES (120 V SERVICE)														2													
#6 BSCW																											
INTERCONNECT 12C CABLE																											
DLW (DETECTOR LOOP WIRE)																											
DLC (DETECTOR LED-IN-CABLE)																											
PRE-EMPTION																											

NOTE:  
THIS AUTOCAD DRAWING HAS BEEN REVISED AND REPLOTED SUBSEQUENT TO INTERNAL ENGINEERING APPROVAL AND SIGN-OFF. FOR THOSE SIGNATURES, SEE THE DRAWING PLOTTED AND ISSUED PREVIOUSLY DURING BIDDING. THE SIGNED DRAWING REMAINS VALID EXCEPT FOR THE CHANGES ONLY AS CLEARLY MARKED ON THIS DRAWING AND ISSUED UNDER THIS LATEST REVISION NUMBER AS SHOWN IN THE TABLE OF REVISIONS LOCATED AT THE LOWER LEFT CORNER OF THE DRAWING. ALL ISSUED REVISIONS SUBSEQUENT TO PREVIOUSLY PLOTTED DRAWING DURING BIDDING REMAIN VALID UNLESS SUPERSEDED BY LATER ISSUED REVISIONS. CHECK ALL ISSUED REVISIONS OF THIS DRAWING.



04/03 PCO-6: VARIOUS TP BC 12/02 PCO-3: VARIOUS TP BC 10/02 PCO-1: NEW SERVICE TP BC		REFERENCE INFORMATION & FILE NO. OF SURVEYS 		<b>BUREAU OF ENGINEERING</b> DEPARTMENT OF PUBLIC WORKS CITY AND COUNTY OF SAN FRANCISCO				DESIGNED: DATE: 3/02 NL/TP DRAWN: DATE: 3/02 NL/JS CHECKED: DATE: 3/02 OSB/STL		APPROVED SECTION MANAGER DATE: DIVISION MANAGER DATE: CITY ENGINEER DATE:		SCALE: NONE SHEET OF SHEETS 30 OF 73		BUSH STREET TRAFFIC SIGNAL UPGRADE BUSH ST AND LAGUNA ST SCHEDULE		SPECIFICATION NO. 0286J DRAWING NO. E-12.1 FILE NO. 78222 REV. NO. 3	
--	--	---	--	--	--	---	--	---	--	--	--	---	--	--	--	---	--

TABLE OF REVISIONS  
CHECK WITH TRACING TO SEE IF YOU HAVE LATEST REVISION

EXTERNAL REFERENCES: 103422.dwg  
 FONTS USED: chh  
 SCALE FACTOR: 120  
 PLOT SCALE: 1"=1'-0"  
 ORIGIN: ELECTRICAL  
 FILE NAME: 0286J\_E12.1.dwg  
 DATE: 10/20/02 1:44