
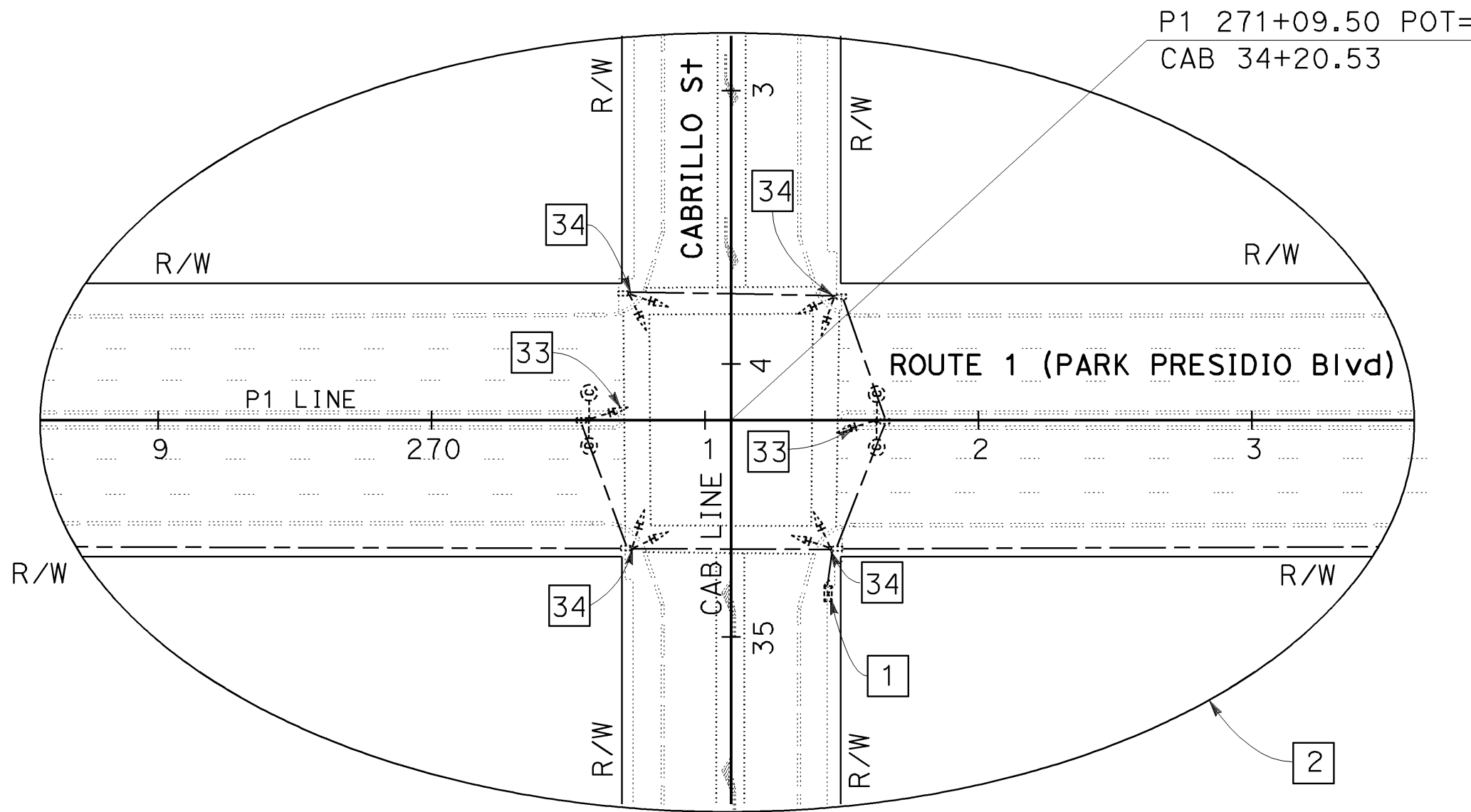


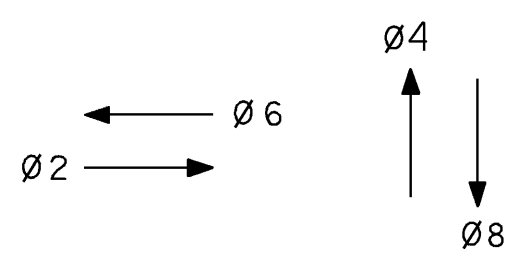
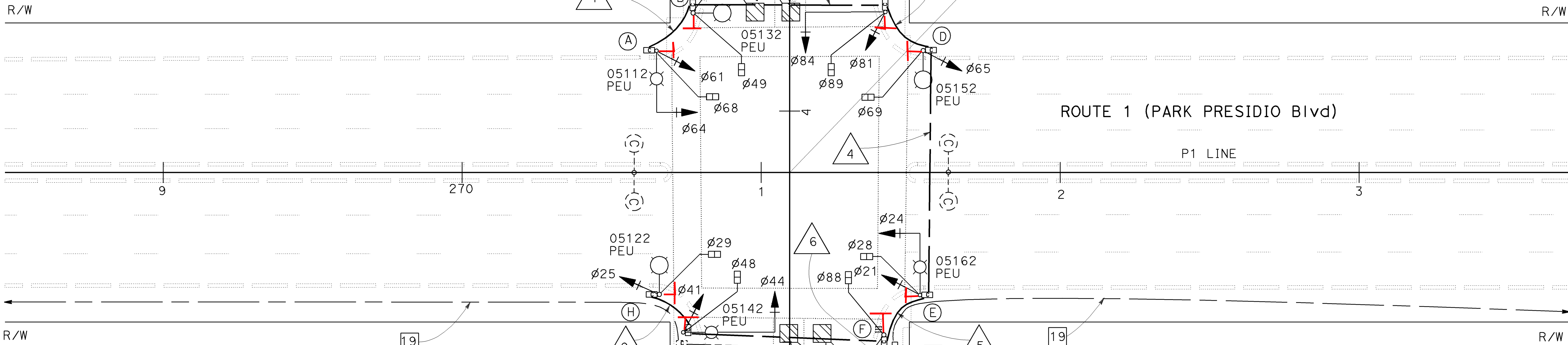
I:\11scd\asbui\its\done\162524\416252u021.asb

STATE OF CALIFORNIA	DEPARTMENT OF TRANSPORTATION	ELECTRICAL
		
FUNCTIONAL SUPERVISOR	KENNETH Y. XU	
CALCULATED/DESIGNED BY		
CHECKED BY		
HENRY Q. GU	KENNETH Y. XU	
REVISED BY		
DATE REVISED		

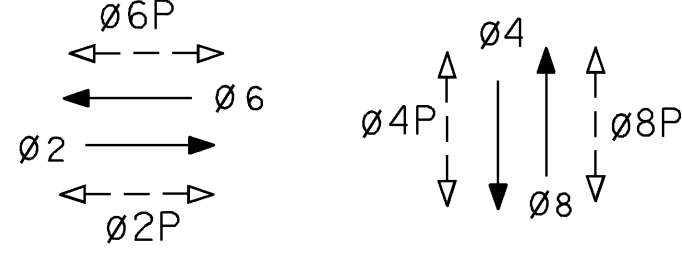
FOR COMPLETE RIGHT OF WAY DATA,
SEE RIGHT OF WAY RECORD MAPS
AT DISTRICT OFFICE.



SCALE: 1"=50'



EXISTING PHASE DIAGRAM



PROPOSED PHASE DIAGRAM

EXISTING EQUIPMENT TO BE REMOVED AND SALVAGED

1 TYPE "M" INTERSECTION CONTROLLER ASSEMBLY

Signal Switch Over on 04-01-2009

SCALE: 1"=20'

MODIFY INTERCONNECTION CONDUIT AND CABLE
MODIFY SIGNAL AND LIGHTING
(LOCATION No. 11)

AS BUILT	
CONTRACT No.	04-162524
C.C.A. DATE	05/28/10
R.E. NAME	F Duan

NEW LOAD:
6-200 W HPS LUMINAIRES
1000 W TRAFFIC SIGNAL

1	1-21-22	INSTALL APS PER CALTRANS 04-3J8904 & SRC 2021-308	D. Yeung	G. de Leon
NO	DATE	DESCRIPTION	BY	APP

RELATIVE BORDER SCALE
IS IN INCHES


0 1 2 3

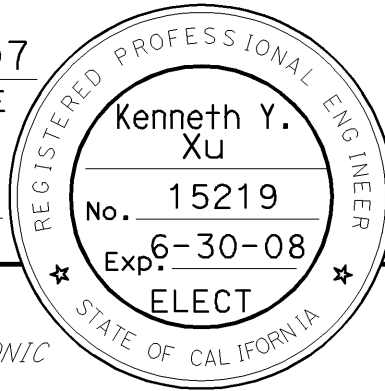
USERNAME => s135696
DGN FILE => 416252u021.asb

CU 04371

EA 162521

E-21

Dist	COUNTY	ROUTE	POST MILES TOTAL PROJECT	SHEET No.	TOTAL SHEET
04	SF	1	R0.7/5.8	91	134
Kenneth Y. Xu			10-24-07		
REGISTERED ELECTRICAL ENGINEER			DATE		
1-14-08			PLANS APPROVAL DATE		
THE STATE OF CALIFORNIA OR ITS OFFICERS OR AGENTS SHALL NOT BE RESPONSIBLE FOR THE ACCURACY OR COMPLETENESS OF ELECTRONIC COPIES OF THIS PLAN SHEET.					



LAST REVISION | DATE PLOTTED => 01-NOV-2010
01-13-08 TIME PLOTTED => 13:03

CONDUCTOR DESIGNATION	NUMBER OF CONDUCTORS													
	RUN NUMBER													
	1	2	3	4	5	6	7	8	9	10	11	12		
No. 14 CONDUCTORS														
Ø21, Ø24, Ø25					6	9	9	3	3					
Ø41, Ø44, Ø45		3	3	3	3	9	9	6						
Ø61, Ø64, Ø65	6	6	6	9	9	9	9							
Ø81, Ø84, Ø85			6	6	6	9	9							
Ø28, Ø29					2	4	4	2	2					
Ø48, Ø49		2	2	2	2	4	4	2						
Ø68, Ø69	2	2	2	4	4	4	4							
Ø88, Ø89			2	2	2	4	4							
APSPPB(Ø28, Ø29)						4 2	4 2	2 +						
APSPPB(Ø48, Ø49)	2 +	2 +	2 +	2 +	2 +	4 2	4 2	2 +	2 +					
APSPPB(Ø68, Ø69)		2 +	4 2	4 2	4 2	4 2	4 2							
APSPPB(Ø88, Ø89)					2 +	4 2	4 2							
PPB NEUTRAL	1	1	1	1	1	2	2	1	1					
SPARE	3	3	3	3	3	6	6	3	3					
(TOTAL No. 14	13	19	28	34	43	68	68	19	10)		CHA		
No. 8 CONDUCTORS														
SIGNAL NEUTRAL	1	1	1	1	1	2	2	1	1					
LIGHTING(240 V)	2	2	2	2	2	2		2	2			2		
TOTAL No. 8	3	3	3	3	3	4	2	3	3			2		
No. 6 CONDUCTORS														
120 V SERVICE TO CONTROLLER							2					2		
TOTAL No. 6							2					2		
DETECTOR CABLES (TYPE B)														
416U		1	1	1	1	1	1					1		
416L		1	1	1	1	1	1					1		
418U		1	1	1	1	1	1					1		
418L		1	1	1	1	1	1					1		
8J6U							1				1			
8J6L							1				1			
8J8U							1				1			
8J8L							1				1			
TOTAL DETECTOR CABLES		4	4	4	4	4	8				4	4		
CONDUIT SIZE	2	2½	3	3	3	2-3	2-3	2	2	1½	1½	1½		

POLE AND EQUIPMENT SCHEDULE									
LOCATION	STANDARD			VEH SIGNAL MOUNTING		PED SIGNAL MOUNTING	APS PPB	HPS LUMINAIRE (WATTS)	SPECIAL REQUIREMENT *
	TYPE	SMA (ft)	LMA (ft)	MAST ARM	POLE		Ø		
(A)	17-2-100	20	8 42	MAS	SV-1-T	SP-1-T	49	200	INSTALL PIPE TENON FOR FUTURE EVD SEE DETAIL 1 ON SHEET E-48.
(B)	15TS		8 42		SV-1-T	SP-1-T	68	200	
(C)	18-2-100	25		MAS	SV-1-T	SP-1-T	69		INSTALL PIPE TENON FOR FUTURE EVD SEE DETAIL 1 ON SHEET E-48.
(D)	15TS		8 42		SV-1-T	SP-1-T	89	200	
(E)	17-2-100	20	8 42	MAS	SV-1-T	SP-1-T	88	200	INSTALL PIPE TENON FOR FUTURE EVD SEE DETAIL 1 ON SHEET E-48.
(F)	1-A				TV-2-T	SP-1-T	28		
(G)	19-2-100	30	8 42	MAS	SV-1-T	SP-1-T	29	200	INSTALL PIPE TENON FOR FUTURE EVD SEE DETAIL 1 ON SHEET E-48.
(H)	15TS		8 42		SV-1-T	SP-1-T	48	200	

AS BUILT
 CONTRACT No. 04-162524
 C.C.A. DATE 05/28/10
 R.E. NAME F Duan

(CONDUCTOR, POLE AND EQUIPMENT SCHEDULES)

ROUTE 1 / CABRILLO STREET

E - 22

