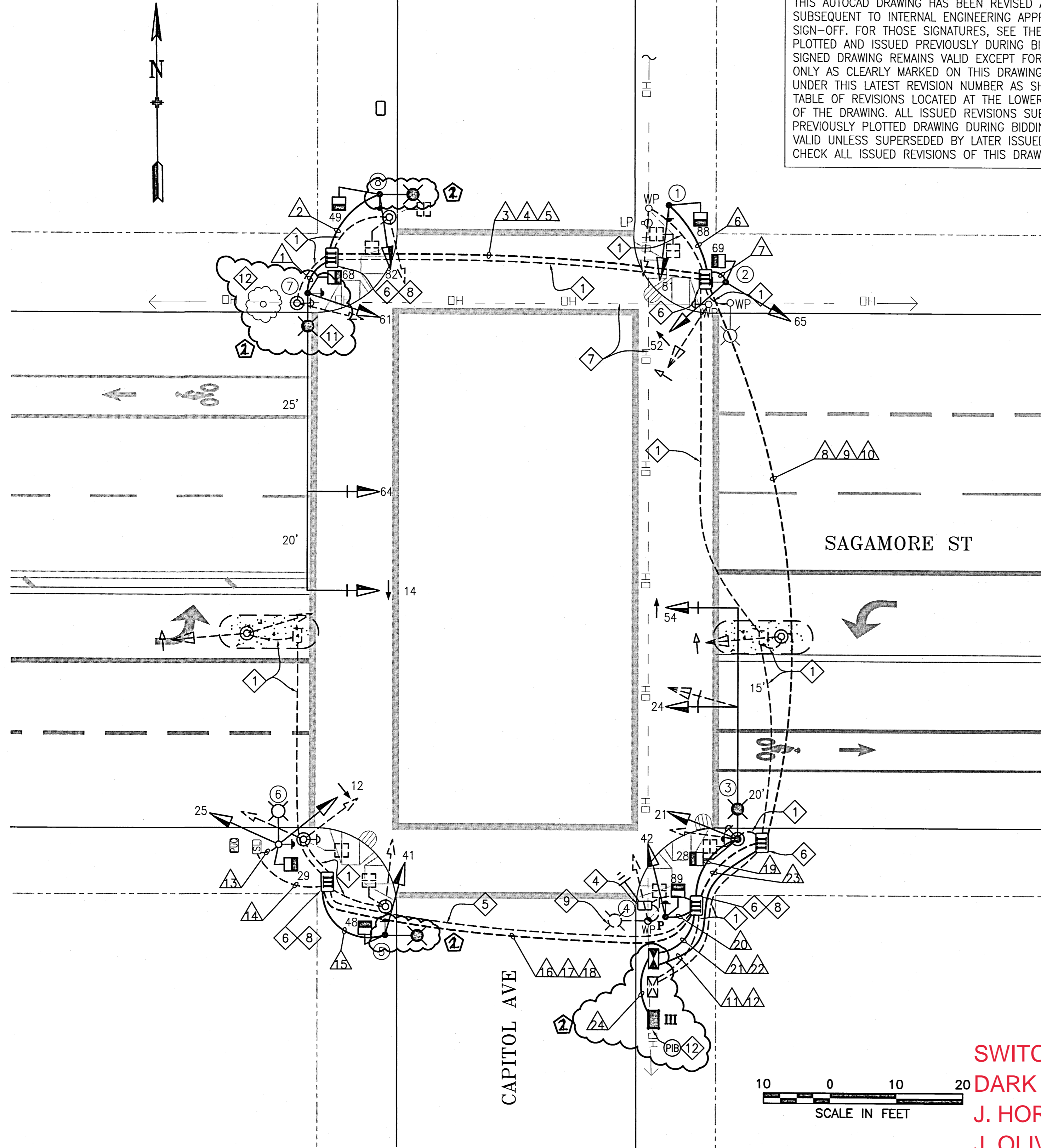


NOTE:
THIS AUTOCAD DRAWING HAS BEEN REVISED AND REPLOTED
SUBSEQUENT TO INTERNAL ENGINEERING APPROVAL AND
SIGN-OFF. FOR THOSE SIGNATURES, SEE THE DRAWING
PLOTTED AND ISSUED PREVIOUSLY DURING BIDDING. THE
SIGNED DRAWING REMAINS VALID EXCEPT FOR THE CHANGES
ONLY AS CLEARLY MARKED ON THIS DRAWING AND ISSUED
UNDER THIS LATEST REVISION NUMBER AS SHOWN IN THE
TABLE OF REVISIONS LOCATED AT THE LOWER LEFT CORNER
OF THE DRAWING. ALL ISSUED REVISIONS SUBSEQUENT TO
PREVIOUSLY PLOTTED DRAWING DURING BIDDING REMAIN
VALID UNLESS SUPERSEDED BY LATER ISSUED REVISIONS.
CHECK ALL ISSUED REVISIONS OF THIS DRAWING.

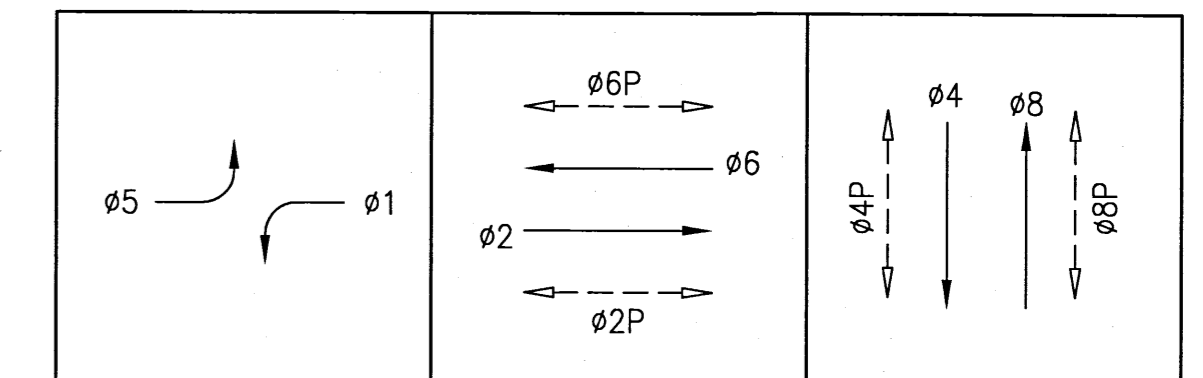


POLE AND EQUIPMENT SCHEDULE											
POLE No.	TYPE OF POLE	LUMINAIRE VOLTAGE/ WATTAGE	VEHICLE SIGNAL				PEDESTRIAN SIGNAL			REMARKS	
			No.	TYPE	MOUNTING	VISORS	LOUVERS	No.	TYPE		MOUNTING
①	1-A(10')		81	3S12"	TV-1-T	T		88	1S-COUNT	SP-1	APS-2W
②	1-A(10')		52 65	3S12"LA 3S12"	TV-2-T	T T		69	1S-COUNT	SP-1	APS-2W
③	24-3-100 W/ 35' MAST ARM AND 6' LA	A1 108	21 24 54	3S12" 3S12" 3S12"LA	SV-1-T MAS MAS	T T T		28	1S-COUNT	SP-1	APS-2W BACKPLATE BACKPLATE
④	1-A(10')		42	3S12"	TV-1-T	T		89	1S-COUNT	SP-1	APS-2W
⑤	CITY STANDARD STREET LIGHT	A 72	41	3S12"	SV-1-T	T		48	1S-COUNT	SP-1	APS-2W
⑥	CITY STANDARD STREET LIGHT		25 12	3S12" 3S12"LA	SV-2-TA	T T		29	1S-COUNT	SP-1	APS-2W
⑦	26-3-100 WITH 45' MA AND 6' LA	A1 108	61 64 14	3S12" 3S12" 3S12"LA	SV-1-T MAS MAS	T T T		68	1S-COUNT	SP-1	APS-2W BACKPLATE BACKPLATE
⑧	CITY STANDARD STREET LIGHT	A 72	82	3S12"	SV-1-T	T		49	1S-COUNT	SP-1	APS-2W

SHEET NOTES:

- ABANDON EXISTING CONDUIT AND WIRING, CUT EXISTING CONDUIT TO PULLBOX WALL AND CAP ENDS. PRIOR TO REMOVING OF EXISTING CABLES IN EXISTING CONDUIT, FIELD VERIFY AND MAINTAIN SERVICES TO STREETLIGHTS AND TRAFFIC CONTROLLER.
- INSTALL CITY FURNISHED ONE SECTION LED PEDESTRIAN COUNTDOWN SIGNAL MODULE IN CONTRACTOR FURNISHED ONE SECTION PEDESTRIAN SIGNAL HOUSING.
- CITY FORCES TO INSTALL CITY FURNISHED APS PUSH BUTTONS ON POLES AS SHOWN ON INTERSECTION DRAWING AND AS INDICATED IN POLE & EQUIPMENT SCHEDULE. CONTRACTOR TO F/I WIRING AS SHOWN IN THE CONDUIT AND WIRING SCHEDULE.
- SPLICE AND EXTEND EXISTING PG&E SERVICE CONNECTION TO NEW IC LOCATION PER CONDUIT AND WIRING SCHEDULE. F/I 40A INLINE FUSE AND FUSE HOLDER FOR TRAFFIC SIGNAL SERVICE DISCONNECT IN FIRST PULL BOX NEXT TO THE PG&E SERVICE POINT.
- MAINTAIN EXISTING CONDUIT, REMOVE EXISTING CABLES EXCEPT SERVICES TO STREETLIGHTS AND INTERCONNECT CABLES WHERE APPLICABLE. PRIOR TO REMOVAL OF EXISTING CABLES IN EXISTING CONDUIT, FIELD VERIFY AND MAINTAIN SERVICES TO STREETLIGHTS AND INTERCONNECT.
- BRING NEW CONDUITS INTO EXISTING PULL BOX. EXERCISE CAUTION TO AVOID DAMAGE TO EXISTING PULL BOX.
- EXERCISE CAUTION TO AVOID CONFLICT WITH OVERHEAD UTILITY WIRES AT THIS INTERSECTION.
- SPLICE NEW STREET LIGHT TO EXISTING STREETLIGHT SERVICE, PROVIDE 10A FUSE AND FUSE HOLDER FOR NEW STREETLIGHT WIRES
- COORDINATE WITH SFPUC TO REMOVE PG&E LIGHT FIXTURE ON THE WOOD POLE AFTER ACTIVATION OF NEW STREET LIGHTS
- SEE LIGHTING FIXTURE SCHEDULE ON E-0.1
- POLE SHALL BE 25' TALL WITH LUMINAIRE ARM ATTACHMENT HEIGHT OF 24'
- SPLICE AND EXTEND 2-#14 FIRE HOUSE PRE-EMPT WIRES TO NEW CABINET DURING SWITCHOVER.
- CONTRACTOR TO REMOVE TREE UNDER BUF SUPERVISION.

PHASE DIAGRAM



SWITCHOVER HELD 11/21/2019

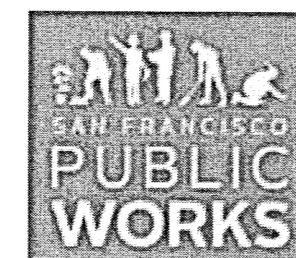
DARK @ 12:12 PM; 3-COLOR @ 2:03 PM

J. HORNOSTEL (SFMTA-SSD); E.LEE (SFPW-ICM)

J. OLIVARES, A.ROBERTSON, M.TODD (MTA SIGNAL SHOP)

NO.	DATE	DESCRIPTION	BY	APP.
②	8/2018	POD #2 MISCELLANEOUS ELECTRICAL REVISIONS	JH/ST	GD/SL

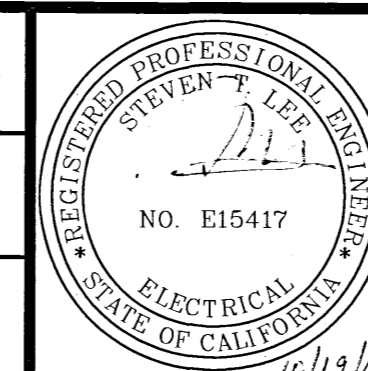
REFERENCE INFORMATION
& FILE NO. OF SURVEYS



BUREAU OF DESIGN &
ENGINEERING
CITY & COUNTY OF SAN FRANCISCO
SAN FRANCISCO PUBLIC WORKS
30 VAN NESS AVENUE, 5TH FLOOR
SAN FRANCISCO, CA 94102 - 6028

Section Mgr:	PHILIP THWIN
Deputy Bureau Mgr:	IOBALBHAI DHAPA
Bureau Mgr:	PATRICK RIVERA

DESIGNED:	DATE:
JH/CMF	5/2017
DRAWN:	DATE:
JH/CMF	5/2017
CHECKED:	DATE:
GD/SL	5/2017



SCALE:
AS SHOWN
SHEET OF SHEETS
30 OF 63

CONTRACT 34 - TRAFFIC
SIGNAL MODIFICATIONS
CAPITOL AVENUE AND SAGAMORE STREET
TRAFFIC SIGNAL WORK
POLE AND EQUIPMENT SCHEDULE

CONTRACT NO.	2805J
DRAWING NO.	E-11.0
FILE NO.	109,566
REV. NO.	1

CONDUIT AND WIRING SCHEDULE (FURNISH AND INSTALL CONDUIT AND WIRES)

CONDUIT RUN NUMBER	1	2	3	4	5	6	7	8	9	10	11	12	13	14	15	16	17	18	19	20	21	22	23	24	25
CONDUIT SIZE (INCH)	2	2	2	2	2	2	2	2	2	2	3	2	UNK	UNK	2	2	2	2	2	2	3	2	2	2	2
NOTES	GRS	GRS		EX,SP	EX					GRS		SP	EX	EX			EX,SP,EX,SP					SP	EX		
VEHICLE SIGNAL 61	3		3					3			3														
VEHICLE SIGNAL 64	3		3					3			3														
VEHICLE SIGNAL 14	3		3					3			3														
PED SIGNAL 68	2		2					2			2														
APS XING SAGAMORE ON POLE 7	2		2					2			2														
VEHICLE SIGNAL 82		3	3					3			3														
PED SIGNAL 49		2	2					2			2														
APS XING CAPITOL ON POLE 8		2	2					2			2														
VEHICLE SIGNAL 81						3				3	3														
PED SIGNAL 88						2				2	2														
APS XING CAPITOL ON POLE 1						2				2	2														
VEHICLE SIGNAL 52							3			3	3														
VEHICLE SIGNAL 65							3			3	3														
PED SIGNAL 69							2			2	2														
APS XING SAGAMORE ON POLE 2							2			2	2														
VEHICLE SIGNAL 25												3	3			3					3				
VEHICLE SIGNAL 12												3	3			3					3				
PED SIGNAL 29												2	2			2					2				
APS XING SAGAMORE ON POLE 6												2	2			2					2				
VEHICLE SIGNAL 41														3	3						3				
PED SIGNAL 48														2	2						2				
APS XING CAPITOL ON POLE 5														2	2						2				
VEHICLE SIGNAL 21																		3			3				
VEHICLE SIGNAL 24																		3			3				
VEHICLE SIGNAL 54																		3			3				
PED SIGNAL 28																		2			2				
APS XING SAGAMORE ON POLE 3																		2			2				
VEHICLE SIGNAL 42																				3	3				
PED SIGNAL 89																				2	2				
APS XING CAPITOL ON POLE 4																				2	2				
#14 NEUTRAL	4	2				2	2					2	2	2						4	2				
#14 SPARE			3					3			3			3		3					3				
TOTAL #14 WIRES	17	9	23			9	12	23	17		40		12	15	9	20			17	9	40				
#10 WIRES NEUTRAL			1					1	1		2					1					2				
#10 WIRES STREET LIGHT	2	2										(2)		2				2							
#8 WIRES STREET LIGHT					2					2							2					2			
#8 WIRES (120 V SERVICE)																									
#6 BSCW																									
INTERCONNECT 12C CABLE																									
#14 WIRES FIRE HOUSE PREEMPT																									

SHEET NOTES:

- 1 F/I PER GROUNDING LAYOUT DETAIL AND PROJECT SPECIFICATIONS SECTION 34 41 13.
- 2 (#) INDICATES EXISTING WIRE TO REMAIN

NOTE:
THIS AUTOCAD DRAWING HAS BEEN REVISED AND REPLOTTED SUBSEQUENT TO INTERNAL ENGINEERING APPROVAL AND SIGN-OFF. FOR THOSE SIGNATURES, SEE THE DRAWING PLOTTED AND ISSUED PREVIOUSLY DURING BIDDING. THE SIGNED DRAWING REMAINS VALID EXCEPT FOR THE CHANGES ONLY AS CLEARLY MARKED ON THIS DRAWING AND ISSUED UNDER THIS LATEST REVISION NUMBER AS SHOWN IN THE TABLE OF REVISIONS LOCATED AT THE LOWER LEFT CORNER OF THE DRAWING. ALL ISSUED REVISIONS SUBSEQUENT TO PREVIOUSLY PLOTTED DRAWING DURING BIDDING REMAIN VALID UNLESS SUPERSEDED BY LATER ISSUED REVISIONS. CHECK ALL ISSUED REVISIONS OF THIS DRAWING.