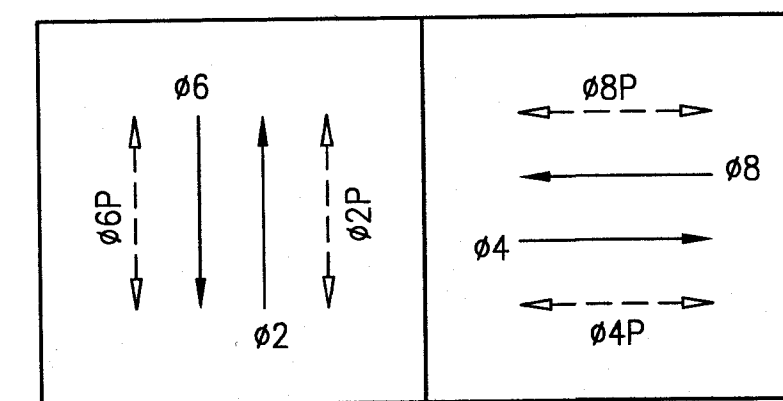


POLE AND EQUIPMENT SCHEDULE											
POLE No.	TYPE OF POLE	LUMINAIRE VOLTAGE/WATTAGE	VEHICLE SIGNAL					PEDESTRIAN SIGNAL			REMARKS
			No.	TYPE	MOUNTING	VISORS	LOUVERS	No.	TYPE	MOUNTING	
①	CITY STANDARD STREET LIGHT	120/240V 150W	21	3S12"	SV-1-T	T		28	1S-COUNT	SP-1	MOUNT SIGNAL ON PROPERTY LINE SIDE
②	1-A (10')		42 85	3S12" 3S12"	TV-2-T	T T		89	1S-COUNT	SP-1	MOUNT SIGNAL ON PROPERTY LINE SIDE
③	19-1-100 W/ 20' MAST ARM & LUMINAIRE ARM	120/240V 150W	44 41	3S12" 3S12"	MAS SV-1-T	T T		48	1S-COUNT	SP-1	BACKPLATE MOUNT SIGNAL ON PROPERTY LINE SIDE
④	1-A (10')		62	3S12"	TV-1-T	T		29	1S-COUNT	SP-1	MOUNT SIGNAL ON PROPERTY LINE SIDE
⑤	CITY ST'D STREET LIGHT	120/240V 150W	61	3S12"	SV-1-T	T		68	1S-COUNT	SP-1	MOUNT SIGNAL ON PROPERTY LINE SIDE
⑥	1-A (10')		82 45	3S12" 3S12"	TV-2-T	T T		49	1S-COUNT	SP-1	MOUNT SIGNAL ON PROPERTY LINE SIDE
⑦	19-1-100 W/ 20' MAST ARM & LUMINAIRE ARM	120/240V 150W	84 81	3S12" 3S12"	MAS SV-1-T	T T		88	1S-COUNT	SP-1	BACKPLATE MOUNT SIGNAL ON PROPERTY LINE SIDE
⑧	1-A (10')		22	3S12"	TV-1-T	T		69	1S-COUNT	SP-1	MOUNT SIGNAL ON PROPERTY LINE SIDE

DETAIL NOTES:

- ⓐ CONTROLLER SERVICE POINT IS A PG&E SERVICE BOX NEAR 690 GENEVA AVENUE. CONTRACTOR SHALL COORDINATE WITH PG&E THROUGH SFPUC (BHASKAR GOSWAMI (415) 554-3135) FOR FINAL POWER SERVICE CONNECTION. TEN DAYS NOTICE IS REQUIRED.
- ⓑ CONTRACT SHALL PROVIDE 40A INLINE FUSE AND FUSE HOLDER FOR TRAFFIC SIGNAL SERVICE DISCONNECT AND 30A INLINE FUSE & FUSE HOLDER FOR STREETLIGHT DISCONNECT IN FIRST PULL BOX NEXT TO THE NEW PG&E SERVICE.
- ⓒ CONTRACTOR TO INSTALL CITY FURNISHED INTERSECTION TRAFFIC SIGNAL CONTROLLER CABINET.
- ⓓ EXISTING STOP SIGN AND PAVEMENT MARKING TO BE REMOVED BY CITY FORCES BEFORE SIGNAL ACTIVATION.
- ⓔ F/I 10A INLINE FUSE AND FUSE HOLDER FOR STREETLIGHT.

PHASE DIAGRAM



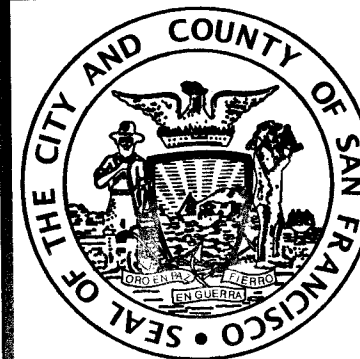
PHASE SEQUENCE

G	Y	R		CAYUGA AVE (NB & SB) - 02 & 06
R		G	Y R	GENEVA AVE (EB & WB) - 04 & 08
WM	FRH		RH	PED XING GENEVA AVE (ES & WS) - 02P & 06P
	RH	WM	FRH RH	PED XING CAYUGA AVE (SS & NS) - 04P & 08P

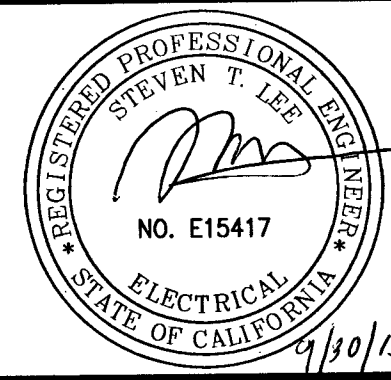
NOTE:  
THIS AUTOCAD DRAWING HAS BEEN REVISED AND REPLOTED SUBSEQUENT TO INTERNAL ENGINEERING APPROVAL AND SIGN-OFF. FOR THOSE SIGNATURES, SEE THE DRAWING PLOTTED AND ISSUED PREVIOUSLY DURING BIDDING. THE SIGNED DRAWING REMAINS VALID EXCEPT FOR THE CHANGES ONLY AS CLEARLY MARKED ON THIS DRAWING AND ISSUED UNDER THIS LATEST REVISION NUMBER AS SHOWN IN THE TABLE OF REVISIONS LOCATED AT THE LOWER LEFT CORNER OF THE DRAWING. ALL ISSUED REVISIONS SUBSEQUENT TO PREVIOUSLY PLOTTED DRAWING DURING BIDDING REMAIN VALID UNLESS SUPERSEDED BY LATER ISSUED REVISIONS. CHECK ALL ISSUED REVISIONS OF THIS DRAWING.

NO.	DATE	DESCRIPTION	BY	APP.
17	9/15	PCO 8 TRANSIT SIGNALS AND GUARD POST	CXL/ZH	SL
TABLE OF REVISIONS				

REFERENCE INFORMATION  
& FILE NO. OF SURVEYS



INFRASTRUCTURE DIVISION  
DEPARTMENT OF PUBLIC WORKS  
CITY AND COUNTY OF SAN FRANCISCO



DESIGNED: DATE:	APPROVED
CXL/WC 3/14	
DRAWN: DATE:	SECTION MANAGER DATE:
DNM/WC 05/29/14	
CHECKED: DATE:	DEPUTY DIVISION MANAGER DATE:
CMH/SL 05/29/14	
	DIVISION MANAGER DATE:

SCALE:
AS SHOWN
SHEET OF SHEETS
31 OF 44

TRANSIT SIGNAL IMPROVEMENT PROJECT
GENEVA AVE AND CAYUGA AVE TRAFFIC SIGNAL WORK (ALTERNATE BID ITEM #1)

CONTRACT NO. 2419J
DRAWING NO. E-12.0
FILE NO. 98,639
REV. NO. 1

Drawing Path: V:\2419J\_CO\_BOND\_TRAFFIC\_SIGNAL\_UPGRADE\3200\_Change\_Orders\PCO\8 TRANSIT SIGNALS AND GUARD POST\PCO\8 TRANSIT SIGNALS AND GUARD POST.dwg  
Plot Time: Wed, 30 Sep 2015 8:11am  
Measurement Units are English  
Model Units: Inches  
Login: 2419J\_CO\_BOND\_TRAFFIC\_SIGNAL\_UPGRADE\3200\_Change\_Orders\PCO\8 TRANSIT SIGNALS AND GUARD POST\PCO\8 TRANSIT SIGNALS AND GUARD POST.dwg  
Title: Block.dwg



[illegible][illegible]

REGISTERED PROFESSIONAL ENGINEER  
STEVEN T. LEE  
NO. E15417  
ELECTRICAL  
STATE OF CALIFORNIA

APPROVED	
SECTION MANAGER	DATE:
DEPUTY DIVISION MANAGER	DATE:
DIVISION MANAGER	DATE:

CONTRACT NO. <b>2419J</b>
DRAWING NO. <b>E-12.1</b>
FILE NO. <b>98,640</b>
REV. NO. <b>1</b>