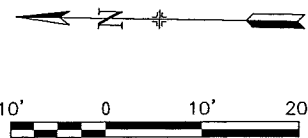


# DETAIL NOTES:

- ① DETECTOR LOOPS SHOWN ONLY FOR REFERENCE. ACTUAL DETECTION TO BE DONE BY VIDEO CAMERA. DO NOT INSTALL LOOPS.
- ① F/I IN-LINE FUSE HOLDER W/ 40 A FUSE FOR IC SERVICE.
- ① F/I VIDEO DETECTION CAMERA ASSEMBLY ON CALTRANS TYPE CCTV POLE PER CTSP ES-16C. 6  
E-0.6
- ② F/I VIDEO DETECTION CAMERA ASSEMBLY ON SIGNAL MAST ARM AS SHOWN. 6  
E-0.6
- ① F/I GUARD POST PER SPDPWSF FILE # LA-021. EXCEPT GUARD POST SHALL BE 6" NOMINAL DIAMETER.

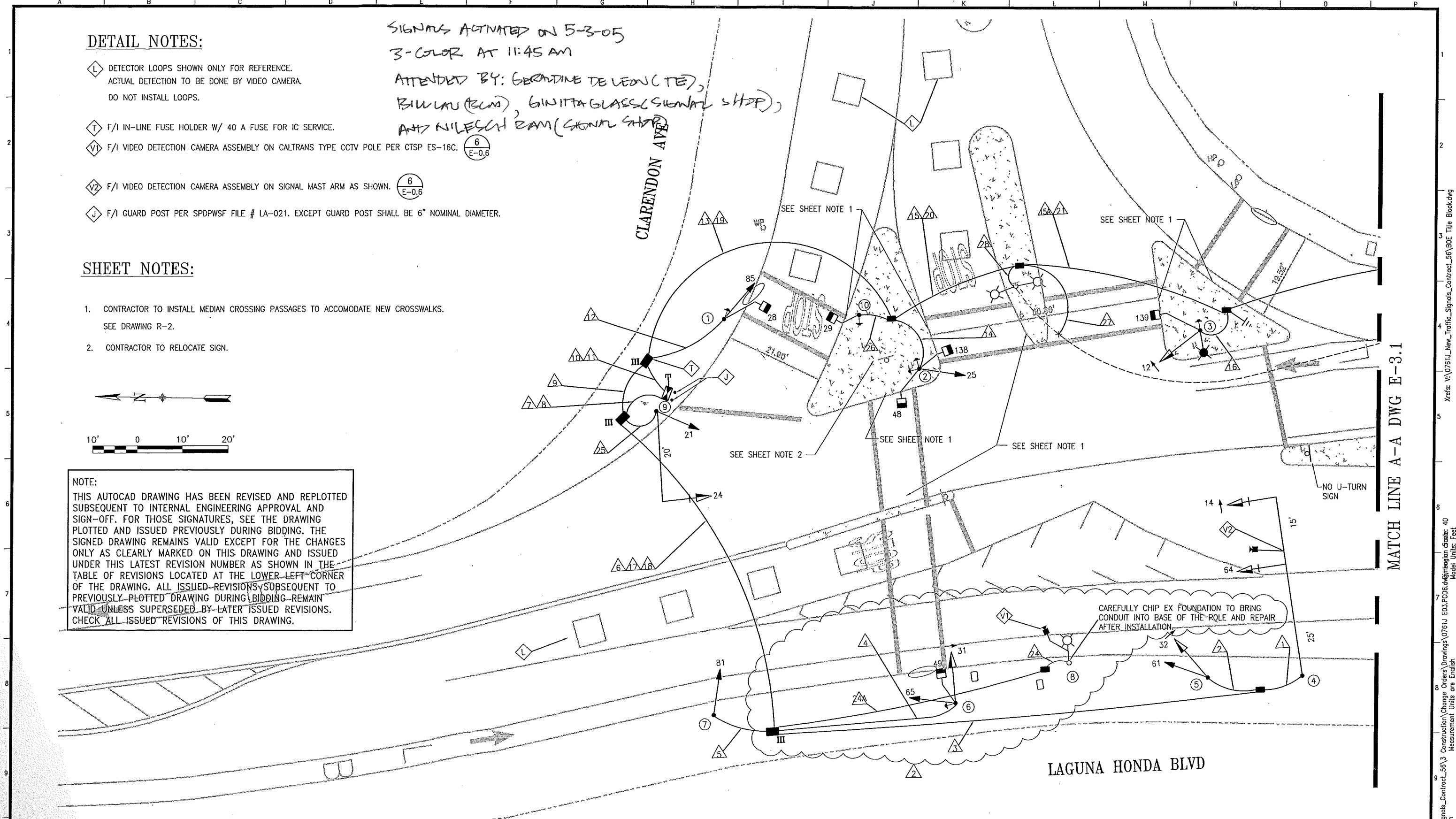
## SHEET NOTES:

- CONTRACTOR TO INSTALL MEDIAN CROSSING PASSAGES TO ACCOMMODATE NEW CROSSWALKS. SEE DRAWING R-2.
- CONTRACTOR TO RELOCATE SIGN.



NOTE:  
THIS AUTOCAD DRAWING HAS BEEN REVISED AND REPLOTED SUBSEQUENT TO INTERNAL ENGINEERING APPROVAL AND SIGN-OFF. FOR THOSE SIGNATURES, SEE THE DRAWING PLOTTED AND ISSUED PREVIOUSLY DURING BIDDING. THE SIGNED DRAWING REMAINS VALID EXCEPT FOR THE CHANGES ONLY AS CLEARLY MARKED ON THIS DRAWING AND ISSUED UNDER THIS LATEST REVISION NUMBER AS SHOWN IN THE TABLE OF REVISIONS LOCATED AT THE LOWER-LEFT CORNER OF THE DRAWING. ALL ISSUED REVISIONS SUBSEQUENT TO PREVIOUSLY PLOTTED DRAWING DURING BIDDING REMAIN VALID UNLESS SUPERSEDED BY LATER ISSUED REVISIONS. CHECK ALL ISSUED REVISIONS OF THIS DRAWING.

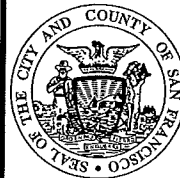
SIGNALS ACTIVATED ON 5-3-05  
3-COLOR AT 11:45 AM  
ATTENDED BY: GERARDINE DE LEON (TE),  
BILLY LAU (ECM), GINNY TAGLASS (SIGNAL SHOP),  
AND NILESCH RAM (SIGNAL SHOP)



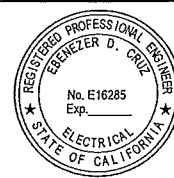
NO.	DATE	DESCRIPTION	BY	APP.
2	04/05	RELOCATE VIDEO CAMERA TO EX SL	BC	
1	10/04	ADD BOLLARDS & RELOCATE POLE #10	RP	BC
0	01/04	ISSUED FOR BID		

CHECK WITH TRACING TO SEE IF YOU HAVE LATEST REVISION

REFERENCE INFORMATION  
& FILE NO. OF SURVEYS



**BUREAU OF ENGINEERING**  
DEPARTMENT OF PUBLIC WORKS  
CITY AND COUNTY OF SAN FRANCISCO



DESIGNED: DATE:	APPROVED
GD 01/04	SECTION MANAGER DATE:
DRAWN: DATE:	DEPUTY BUREAU MANAGER DATE:
GD 01/04	CITY ENGINEER DATE:
CHECKED: DATE:	
BC 01/04	

SCALE:
AS SHOWN
SHEET OF SHEETS

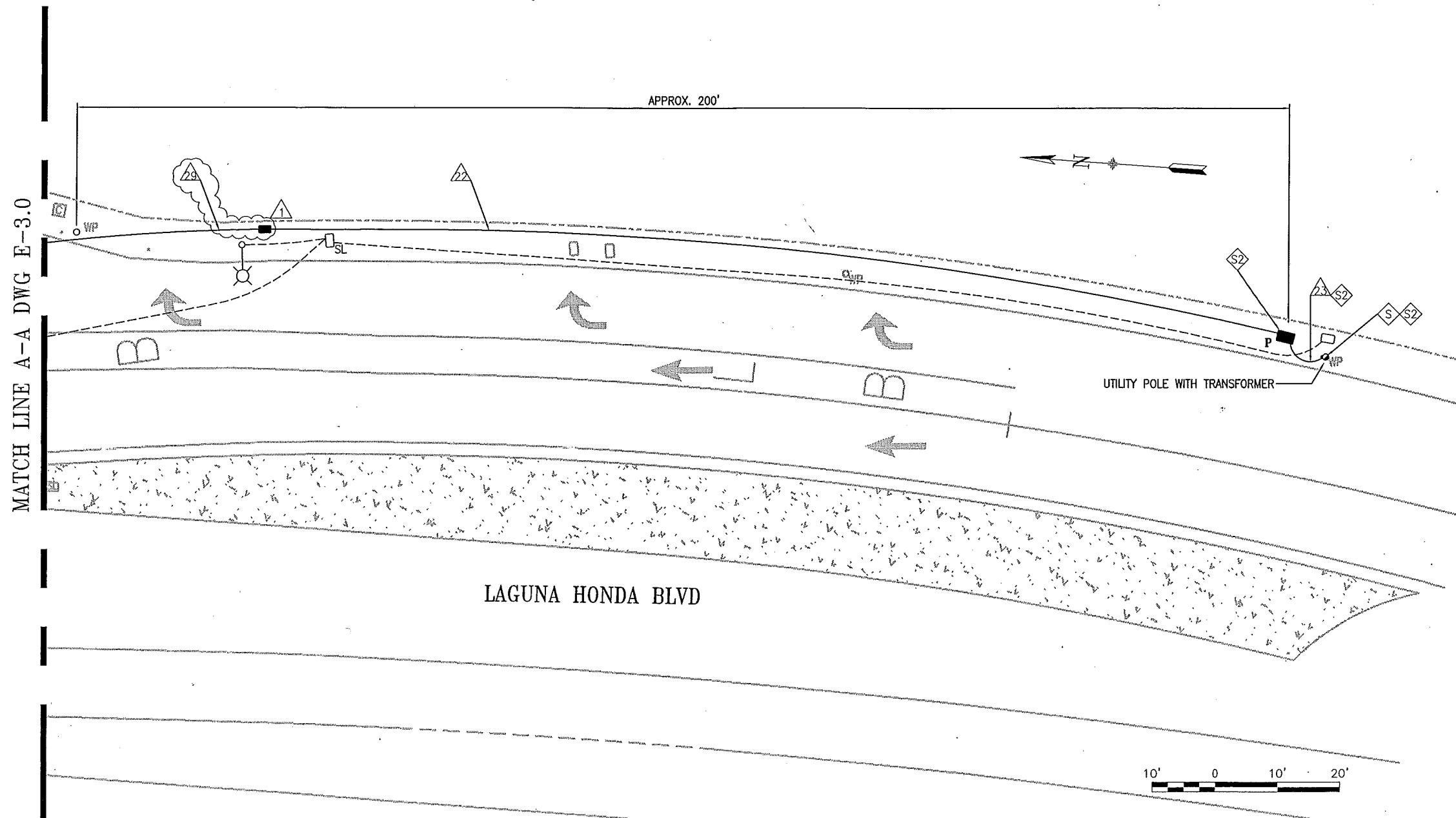
NEW TRAFFIC SIGNALS CONTRACT 56
CLARENDON AVENUE AND LAGUNA HONDA BOULEVARD TRAFFIC SIGNAL WORK

SPECIFICATION NO.
0761J
DRAWING NO.
E-3.0
FILE NO.
84,258
REV. NO.
2

MATCH LINE A-A DWG E-3.1

# DETAIL NOTES:

- S CONTRACTOR SHALL COORDINATE WITH PG&E VIA WALLY SUN OF HETCH HETCHY AT (415) 554-1873 FOR SERVICE CONNECTION WORK PRIOR TO START OF CONSTRUCTION.
- S2 F/I OF PG&E SPLICE BOX, SERVICE CONDUITS, AND RISERS ARE DELETABLE BID ITEMS (SEE CONTRACT SPECIFICATIONS).



NO.	DATE	DESCRIPTION	BY	APP.
1	10/04	ADD TYPE I PULL BOX	RP	BC
0	01/04	ISSUED FOR BID		

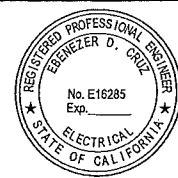
TABLE OF REVISIONS

CHECK WITH TRACING TO SEE IF YOU HAVE LATEST REVISION

REFERENCE INFORMATION  
& FILE NO. OF SURVEYS



**BUREAU OF ENGINEERING**  
DEPARTMENT OF PUBLIC WORKS  
CITY AND COUNTY OF SAN FRANCISCO



DESIGNED:	DATE:	APPROVED
GD	01/04	
DRAWN:	DATE:	SECTION MANAGER
GD	01/04	
CHECKED:	DATE:	DEPUTY BUREAU MANAGER
BC	01/04	
		CITY ENGINEER

SCALE:
AS SHOWN
SHEET OF SHEETS

NEW TRAFFIC SIGNALS CONTRACT 56
CLARENDON AVENUE AND LAGUNA HONDA BOULEVARD TRAFFIC SIGNAL WORK

SPECIFICATION NO.
0761J
DRAWING NO.
E-3.1
FILE NO.
84,259
REV. NO.
1

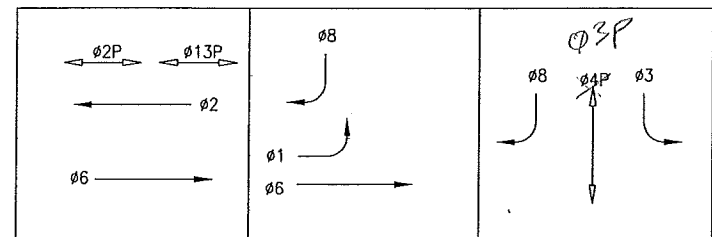
POLE AND EQUIPMENT SCHEDULE											
POLE No.	TYPE OF POLE	LUMINAIRE (HPS)	VEHICLE SIGNAL					PEDESTRIAN SIGNAL			REMARKS
		VOLTAGE/ WATTS	No.	TYPE	MOUNTING	VISORS	LOUVERS	No.	TYPE	MOUNTING	
①	1-A (10')		85	3S8"	TV-1	T		28	1S-COUNT	SP-1	PPB
②	1-A (10')		25	3S8"	TV-1	T		48 138	1S-COUNT 1S-COUNT	SP-1 SP-1	PPB PPB
③	CITY STANDARD STREET LIGHT	240V/150W D	12	3S12"-LA	SV-1-T	T		139	1S-COUNT	SP-1	PPB
④	27-3-80 WITH 40' MAST ARM		14 64	3S12"-LA 3S12"	MAS MAS	T T					BACKPLATES FOR VEH HEADS 14 & 64
⑤	1-A (10')		32 61	3S12"-LA 3S8"	TV-2-T	T T					
⑥	1-A (10')		31 65	3S12"-LA 3S8"	TV-2-T	T T		49	1S-COUNT	SP-1	PPB
⑦	1-A (10')		81	3S8"	TV-1	T					
⑧	EX SL										
⑨	16-1-70 WITH 20' MAST ARM		24 21	3S12" 3S8"	MAS SV-1	T T					BACKPLATE
⑩	1-A (7')							29	1S-COUNT	TP-1	PPB

DETAIL NOTES

D F/I WITH INTEGRAL BALLAST AND PHOTOELECTRIC CONTROL. F/I FUSE AND FUSE HOLDERS PER SPOWSF FILE 49,092.

NOTE:  
THIS AUTOCAD DRAWING HAS BEEN REVISED AND REPLOTTED SUBSEQUENT TO INTERNAL ENGINEERING APPROVAL AND SIGN-OFF. FOR THOSE SIGNATURES, SEE THE DRAWING PLOTTED AND ISSUED PREVIOUSLY DURING BIDDING. THE SIGNED DRAWING REMAINS VALID EXCEPT FOR THE CHANGES ONLY AS CLEARLY MARKED ON THIS DRAWING AND ISSUED UNDER THIS LATEST REVISION NUMBER AS SHOWN IN THE TABLE OF REVISIONS LOCATED AT THE LOWER LEFT CORNER OF THE DRAWING. ALL ISSUED REVISIONS SUBSEQUENT TO PREVIOUSLY PLOTTED DRAWING DURING BIDDING REMAIN VALID UNLESS SUPERSEDED BY LATER ISSUED REVISIONS. CHECK ALL ISSUED REVISIONS OF THIS DRAWING.

PHASE DIAGRAM - STEADY DEMAND



PHASE SEQUENCE - STEADY DEMAND

G	Y	R	LAGUNA HONDA (NB - 02)
G	Y	R	LAGUNA HONDA (SB - 06)
R	G	Y	LAGUNA HONDA (SB LT- 01)
R	G	Y	CLARENDON (WB LT - 03)
R	G	Y	CLARENDON (WB RT - 08)
WM	FRH	RH	PED XING CLARENDON (E/S - 02P)
RH	WM	FRH	PED XING LAGUNA HONDA (N/S - 04P)
WM	FRH	RH	PED XING CLARENDON (E/S - 013P)

1	04/05	DELETE CCTV POLE	BC	
0	01/04	ISSUED FOR BID		
NO.	DATE	DESCRIPTION	BY	APP.

TABLE OF REVISIONS  
CHECK WITH TRACING TO SEE IF YOU HAVE LATEST REVISION

REFERENCE INFORMATION  
& FILE NO. OF SURVEYS

**BUREAU OF ENGINEERING**  
DEPARTMENT OF PUBLIC WORKS  
CITY AND COUNTY OF SAN FRANCISCO

DESIGNED: DATE: 01/04  
DRAWN: DATE: 01/04  
CHECKED: DATE: 01/04  
CITY ENGINEER

APPROVED

SECTION MANAGER DATE:

DEPUTY BUREAU MANAGER DATE:

CITY ENGINEER DATE:

SCALE: NONE

SHEET OF SHEETS

NEW TRAFFIC SIGNALS CONTRACT 56

CLARENDON AVENUE AND LAGUNA HONDA BOULEVARD  
POLE AND EQUIPMENT SCHEDULE

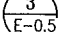
SPECIFICATION NO. 0761J  
DRAWING NO. E-3.2  
FILE NO. 84,260  
REV. NO. 1

CONDUIT AND WIRING SCHEDULE

CONDUIT RUN NUMBER		1	2	3	4	5	6	7	8	9	10	11	12	13	14	15	15A	16	17	18	19	20	21	22	23	24	25	26	27	28	29	24A	
CONDUIT SIZE (INCH)		2	2	2	2	2	2	3	2	2	3	2	2	2	2	2	2	2	2	2	2	2	2	2	2	1.5	2	2	2	2	2	2	
NOTES									SPARE	SPARE										SPARE						GRS	2						
WIRING (F/I)	#14 WIRES																																
	VEH SIGNAL 14	3		3				3											3														
	VEH SIGNAL 64	3		3				3											3														
	VEH SIGNAL 61		3	3				3											3														
	VEH SIGNAL 32		3	3				3											3														
	PED SIGNAL 49				2		2	2											3														
	VEH SIGNAL 31				3		3	3																									
	VEH SIGNAL 65				3		3	3																									
	PPB (ON POLE 6 FOR PEDS XING 4P)				2		2	2																									
	VEH SIGNAL 81					3	3	3																									
	PED SIGNAL 139											2			2		2	2	2														
	VEH SIGNAL 12											3			3		3	3	3														
	PPB (ON POLE 3 FOR PEDS XING 13P)											2			2		2	2	2														
	PED SIGNAL 48											2			2	2																	
	PED SIGNAL 138											2			2	2																	
	VEH SIGNAL 25											3			3	3																	
	PPB (ON POLE 2 FOR PEDS XING 13P)											2			2	2																	
	PPB (ON POLE 2 FOR PEDS XING 4P)											2			2	2																	
	PED SIGNAL 29											2			2																		
	PPB (ON POLE 10 FOR PEDS XING 2P)											2			2																	2	
	PED SIGNAL 28											2		2																		2	
	VEH SIGNAL 85											3		3																			
	PPB (ON POLE 1 FOR PEDS XING 2P)											2		2																			
	VEH SIGNAL 21								3																							3	
	VEH SIGNAL 24								3																							3	
	#14 NEUTRAL	2	1		2	1								2		3			2														2
	SPARE			3			3	3				3			3		3	3															
	TOTAL #14 WIRES	8	7	15	12	4	16	34				32		9	25	14	10	10	9	12									8	4			
	#10 WIRES NEUTRAL			1			1	3				3			2		1	1		1													
	#8 WIRES (120V SERVICE)												2		2		2	2				2	2	2	2	2						2	
#6 BSCW (SEE SHEET NOTE 1)																																	
STREET LIGHT #8 WIRE																		2												2	2		
VIDEO DETECTION CABLE (FOR PHASE 1)	1		1					1											1														
VIDEO POWER CABLE (FOR PHASE 1 VDS)	1		1					1											1														
VIDEO DETECTION CABLE (FOR PHASE 3 AND 8)						1	1																			1						1	
VIDEO POWER CABLE (FOR PHASES 3 AND 8 VDS)						1	1																		1								

NOTE:  
THIS AUTOCAD DRAWING HAS BEEN REVISED AND REPLOTTED SUBSEQUENT TO INTERNAL ENGINEERING APPROVAL AND SIGN-OFF. FOR THOSE SIGNATURES, SEE THE DRAWING PLOTTED AND ISSUED PREVIOUSLY DURING BIDDING. THE SIGNED DRAWING REMAINS VALID EXCEPT FOR THE CHANGES ONLY AS CLEARLY MARKED ON THIS DRAWING AND ISSUED UNDER THIS LATEST REVISION NUMBER AS SHOWN IN THE TABLE OF REVISIONS LOCATED AT THE LOWER LEFT CORNER OF THE DRAWING. ALL ISSUED REVISIONS SUBSEQUENT TO PREVIOUSLY PLOTTED DRAWING DURING BIDDING REMAIN VALID UNLESS SUPERSEDED BY LATER ISSUED REVISIONS. CHECK ALL ISSUED REVISIONS OF THIS DRAWING.

SHEET NOTE:

1. SEE GROUNDING LAYOUT  AND SECTION 02890 IN CONTRACT SPECIFICATIONS.

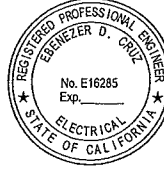
NO.	DATE	DESCRIPTION	BY	APP.
2	04/05	DEL CCTV POLE, REV WIRING	BC	
1	10/04	ADD CONDUIT TAG #29	RP	BC
0	01/04	ISSUED FOR BID		

CHECK WITH TRACING TO SEE IF YOU HAVE LATEST REVISION

REFERENCE INFORMATION  
& FILE NO. OF SURVEYS



**BUREAU OF ENGINEERING**  
DEPARTMENT OF PUBLIC WORKS  
CITY AND COUNTY OF SAN FRANCISCO



DESIGNED:	DATE:	APPROVED	
GD	01/04	SECTION MANAGER	DATE:
DRAWN:	DATE:	DEPUTY BUREAU MANAGER	DATE:
GD	01/04		
CHECKED:	DATE:	CITY ENGINEER	DATE:
BC	01/04		

SCALE:  
NONE  
SHEET OF SHEETS

NEW TRAFFIC SIGNALS CONTRACT 56	
CLARENDON AVENUE AND LAGUNA HONDA BOULEVARD CONDUIT AND WIRING SCHEDULE	

SPECIFICATION NO.	0761J
DRAWING NO.	E-3.3
FILE NO.	84,261
REV. NO.	2