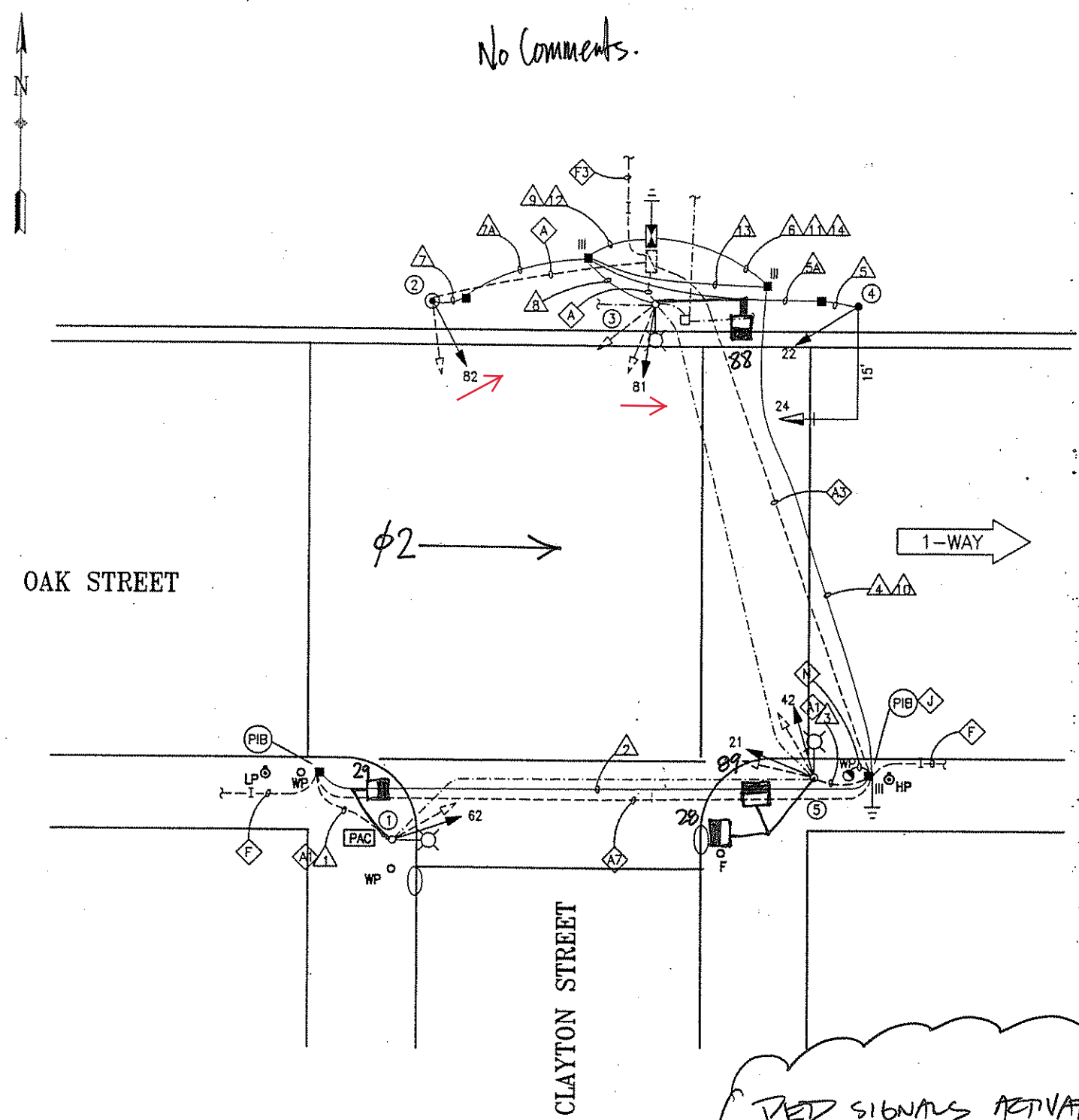


Per SRC 2020-212, upgraded 81 and 82 to 12" with RED BALL, YELLOW RIGHT ARROW, and FLASHING YELLOW RIGHT ARROW - ALam 5/14/2021



No Comments.

SHEET NOTES:



1. ADDITIONAL PULLBOXES, CONDUIT, AND 12/C TO BE FURNISHED AND INSTALLED AT THIS INTERSECTION ARE SHOWN ON DWG. E-43.0.
2. ON NORTH-EAST SIDE, TEMPORARILY BACK FILL TRENCH AND COORDINATE WITH TERRY WEBSTER OF DPW CEMENT SHOP AT 695-2648 TO CONSTRUCT CURB RAMP.

DETAIL NOTES:

- A** EX CONDUIT AND WIRING. R/C EX WIRING. CUT CONDUIT FLUSH TO PULL BOX WALL OR 12" DEPTH, CAP CONDUIT END(S).
- A1** EX CONDUIT AND WIRING. R/C EX WIRING. F/I NEW WIRING AS NOTED.
- A3** EX CONDUIT AND WIRING. R/C EX TS WIRING, EX SERVICE WIRES AND 12/C. CUT CONDUIT FLUSH TO PULL BOX WALL OR 12" DEPTH, CAP CONDUIT END(S).
- A7** EX CONDUIT AND WIRING. R/C EX TS WIRING AND EX 12/C. CUT CONDUIT FLUSH TO PULL BOX WALL OR 12" DEPTH, CAP CONDUIT END(S).
- F** EX CONDUIT AND 12/C, R/C EX 12/C, CUT CONDUIT FLUSH TO PULL BOX WALL OR 12" DEPTH, CAP CONDUIT END(S). FOR CONTINUOUS DISTANCE BETWEEN PULL BOXES, SEE E-43.0.
- F3** EX CONDUIT AND 12/C, R/C EX 12/C, CUT CONDUIT FLUSH TO PULL BOX WALL OR 12" DEPTH, CAP CONDUIT END(S). FOR CONTINUOUS DISTANCE BETWEEN THE CONTROLLERS FROM OAK STREET TO FELL STREET, SEE DWG. E-43.0.
- J** F/I IN-LINE FUSE HOLDER W/ 40A FUSE FOR IC SERVICE. SPUCE NEW WIRES TO EX PG&E SERVICE TO SUPPORT NEW IC.
- N** EX SERVICE WIRES TO REMAIN.

PED SIGNALS ACTIVATED ON 9/6/06

AS BUILT DRAWING  
APPROVAL SIGNATURES ON ORIGINAL CONTRACT DRAWINGS.

	6/03	AS-BUILT	DW	SL	REFERENCE INFORMATION & FILE NO. OF SURVEYS	 <div>BUREAU OF ENGINEERING DEPARTMENT OF PUBLIC WORKS CITY AND COUNTY OF SAN FRANCISCO</div> 	DESIGNED: DATE:	APPROVED	SCALE:  1" = 10 feet	OAK AND FELL STREETS	SPECIFICATION NO. 1660N
							JM/DVS 2/00	SECTION MANAGER DATE:		TRAFFIC SIGNAL UPGRADE	DRAWING NO. E-4.0
							JS 2/00	DIVISION MANAGER DATE:	SHEET OF SHEETS	FILE NO. 74149	
							NKS 2/00	CITY ENGINEER DATE:	8 OF 89	REV. NO. 0	
Δ	2/00	ISSUED FOR BID	JM	NKS							
NO.	DATE	DESCRIPTION	BY	APP.							
TABLE OF REVISIONS CHECK WITH TRACING TO SEE IF YOU HAVE LATEST REVISION											

Per SRC 2020-212, upgraded 81 and 82 to 12" with RED BALL, YELLOW RIGHT ARROW, and FLASHING YELLOW RIGHT ARROW - ALam 5/14/2021

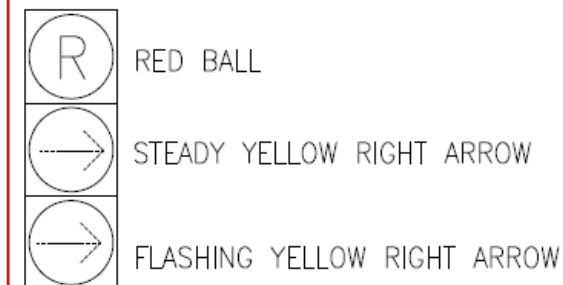
[illegible][illegible]

\* - Field check pole location relative to small; may need new 1-A(7') pole.



DETAIL NOTES:

Q R/S EX TS POLE.

**\*\*:** Signals 81 and 82 are RED BALL, YELLOW RIGHT ARROW, and FLASHING YELLOW RIGHT ARROW.



**AS BUILT DRAWING**  
APPROVAL SIGNATURES ON ORIGINAL CONTRACT DRAWING

6/03		AS-BUILT		DW	SL	REFERENCE INFORMATION & FILE NO. OF SURVEYS			BUREAU OF ENGINEERING DEPARTMENT OF PUBLIC WORKS CITY AND COUNTY OF SAN FRANCISCO		DESIGNED: DATE:	APPROVED		SCALE:  NONE  SHEET OF SHEETS  9 OF 89	OAK AND FELL STREETS	SPECIFICATION NO. 1660N
											JM/DVS	2/00			SECTION MANAGER	DATE:
5/01		CHANGE ORDER #3 MSF - HOMERUN		JP	SL					JN	2/00	DIVISION MANAGER		CLAYTON AND OAK STREETS SCHEDULES		
2/00		ISSUED FOR BID		JM	NKS					JS	2/00	CITY ENGINEER			REV. NO. 0	
NO.	DATE	DESCRIPTION			BY	APP.					CHECKED: DATE:	DATE:				
TABLE OF REVISIONS CHECK WITH TRACING TO SEE IF YOU HAVE LATEST REVISION																