

EXISTING POLE AND EQUIPMENT SCHEDULE U.O.N.										
POLE No.	TYPE OF POLE	VEHICLE SIGNAL					PEDESTRIAN SIGNAL			REMARKS
		No.	TYPE	MOUNTING	VISORS	LOUVERS	No.	TYPE	MOUNTING	
①	OCS POLE	81	3S8"	SV-1-T			69 88	1S-COUNT 1S-COUNT	SP-1-SF (12") SP-1 (22")	
②	OCS POLE	22	3S8"	SV-1-T						
③	1-A (10')	21	3S12"	TV-1-T			28	1S-COUNT	SP-1	
④	1-A (10')	42	3S12"	TV-1-T			89	1S-COUNT	SP-1	
⑤	MARBELITE	41 62	3S8" 3S8"	TV-2-SFA			29 48	1S-COUNT 1S-COUNT	SP-1-SF (12") SP-1 (22")	
⑥	(N) 1-A (10')	(N) 61	(N) 3S12"	(N) TV-1-T			(N) 68	(N) 1S-COUNT	(N) SP-1	
⑦	(N) 1-A (10')	(N) 82	(N) 3S8"	(N) TV-1-T			(N) 49	(N) 1S-COUNT	(N) SP-1	

SHEET NOTES:

⬠ ABANDON EXISTING CONDUIT. REFER TO GENERAL NOTES 21.


Signal modification work at NWC was completed on 4/2/2021 as part of Lower Haight project.


Attendees:
Celine Leung (SFMTA SSD)
Beeior Rov Ikpah (SFPW Electrical)
Daniel Brugmann (SFPW CM)
Ben Murphy (Signal Shop)
Mylon Tom (Bay Area Lightworks)

CONDUIT AND WIRING SCHEDULE									
CONDUIT RUN NUMBER						1	2	3	4
CONDUIT SIZE (INCH)						2	2	2	2
NOTES								EX	EX
VEHICLE SIGNAL 82						3		3	3
PED SIGNAL 49						2		2	2
VEHICLE SIGNAL 61							3	3	3
PED SIGNAL 68							2	2	2
#14 NEUTRAL						2	2		
#14 SPARE								3	
TOTAL #14 WIRES						7	7	13	10
#10 WIRES NEUTRAL								1	1
#10 WIRES STREET LIGHT									
#8 WIRES STREET LIGHT									

NO.	DATE	DESCRIPTION	BY	APP.
TABLE OF REVISIONS				

REFERENCE INFORMATION
& FILE NO. OF SURVEYS






BUREAU OF ENGINEERING
CITY & COUNTY OF SAN FRANCISCO
SAN FRANCISCO PUBLIC WORKS
30 VAN NESS AVENUE, 5TH FLOOR
SAN FRANCISCO, CA 94102 - 6028

Section Mgr: PHILIP THWIN
Deputy Bureau Mgr: FERNANDO CISNEROS
Acting Bureau Mgr: IQBAL DHAPA

Date: 1/21/2020
1/22/2020
1/22/2020

DESIGNED: DATE: 01/2020
DRAWN: DATE: 01/2020
CHECKED: DATE: 01/2020
SL/KK 01/2020

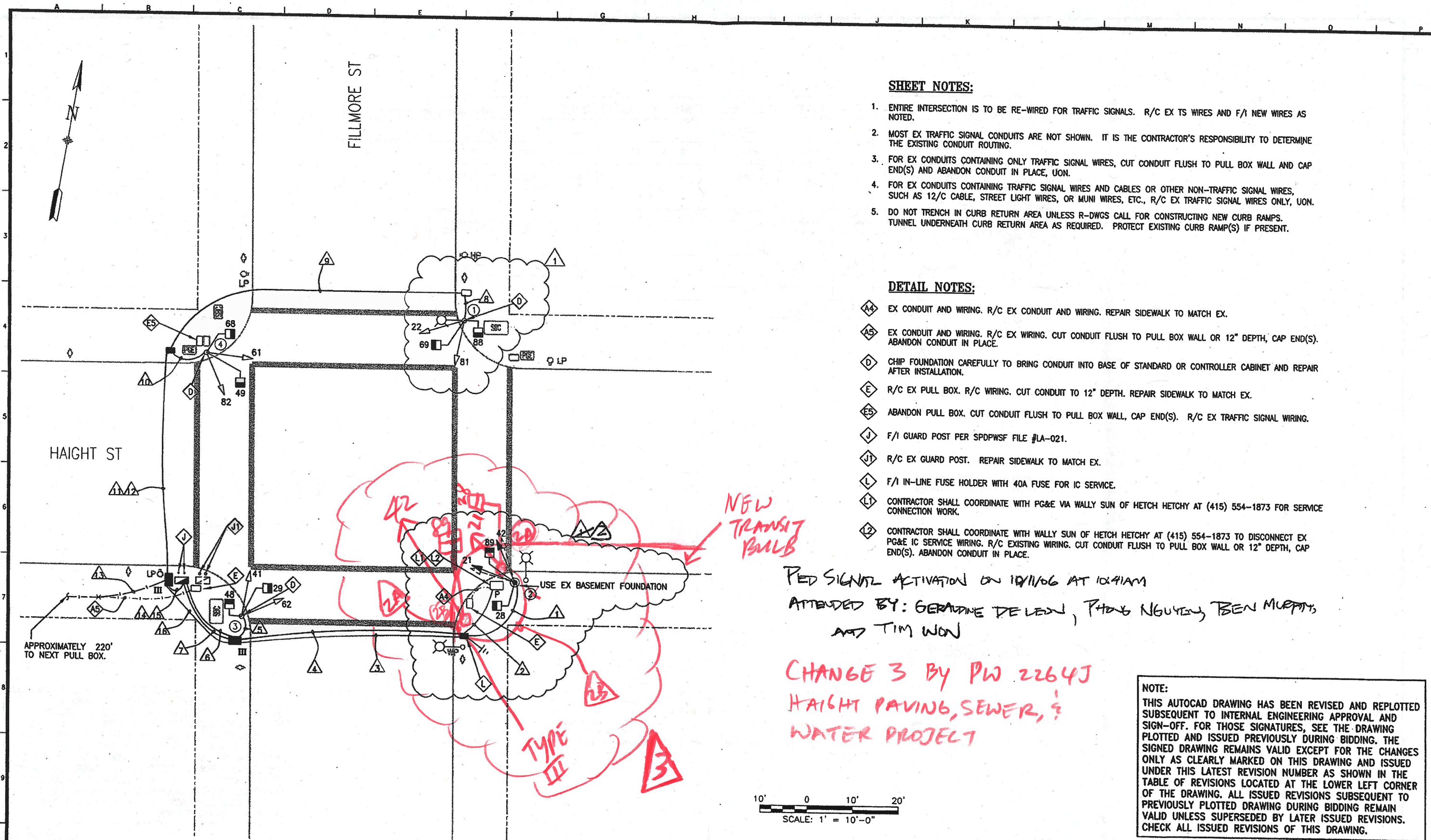


SCALE:
AS SHOWN
SHEET OF SHEETS
OF

LOWER HAIGHT TRAFFIC SIGNALS

HAIGHT STREET AND FILLMORE STREET
TRAFFIC SIGNAL PLAN

CONTRACT NO. 1000013166
DRAWING NO. E-7.0
FILE NO.
REV. NO. 0



SHEET NOTES:

1. ENTIRE INTERSECTION IS TO BE RE-WIRED FOR TRAFFIC SIGNALS. R/C EX TS WIRES AND F/I NEW WIRES AS NOTED.
2. MOST EX TRAFFIC SIGNAL CONDUITS ARE NOT SHOWN. IT IS THE CONTRACTOR'S RESPONSIBILITY TO DETERMINE THE EXISTING CONDUIT ROUTING.
3. FOR EX CONDUITS CONTAINING ONLY TRAFFIC SIGNAL WIRES, CUT CONDUIT FLUSH TO PULL BOX WALL AND CAP END(S) AND ABANDON CONDUIT IN PLACE, UON.
4. FOR EX CONDUITS CONTAINING TRAFFIC SIGNAL WIRES AND CABLES OR OTHER NON-TRAFFIC SIGNAL WIRES, SUCH AS 12/C CABLE, STREET LIGHT WIRES, OR MUNI WIRES, ETC., R/C EX TRAFFIC SIGNAL WIRES ONLY, UON.
5. DO NOT TRENCH IN CURB RETURN AREA UNLESS R-DWGS CALL FOR CONSTRUCTING NEW CURB RAMPS. TUNNEL UNDERNEATH CURB RETURN AREA AS REQUIRED. PROTECT EXISTING CURB RAMP(S) IF PRESENT.

DETAIL NOTES:

- ⬡A4 EX CONDUIT AND WIRING. R/C EX CONDUIT AND WIRING. REPAIR SIDEWALK TO MATCH EX.
- ⬡A5 EX CONDUIT AND WIRING. R/C EX WIRING. CUT CONDUIT FLUSH TO PULL BOX WALL OR 12" DEPTH, CAP END(S). ABANDON CONDUIT IN PLACE.
- ⬡D CHIP FOUNDATION CAREFULLY TO BRING CONDUIT INTO BASE OF STANDARD OR CONTROLLER CABINET AND REPAIR AFTER INSTALLATION.
- ⬡E R/C EX PULL BOX. R/C WIRING. CUT CONDUIT TO 12" DEPTH. REPAIR SIDEWALK TO MATCH EX.
- ⬡ES ABANDON PULL BOX. CUT CONDUIT FLUSH TO PULL BOX WALL, CAP END(S). R/C EX TRAFFIC SIGNAL WIRING.
- ⬡J F/I GUARD POST PER SPDPWSF FILE #LA-021.
- ⬡JT R/C EX GUARD POST. REPAIR SIDEWALK TO MATCH EX.
- ⬡L F/I IN-LINE FUSE HOLDER WITH 40A FUSE FOR IC SERVICE.
- ⬡LT CONTRACTOR SHALL COORDINATE WITH PG&E VIA WALLY SUN OF HETCH HETCHY AT (415) 554-1873 FOR SERVICE CONNECTION WORK.
- ⬡L2 CONTRACTOR SHALL COORDINATE WITH WALLY SUN OF HETCH HETCHY AT (415) 554-1873 TO DISCONNECT EX PG&E IC SERVICE WIRING. R/C EXISTING WIRING. CUT CONDUIT FLUSH TO PULL BOX WALL OR 12" DEPTH, CAP END(S). ABANDON CONDUIT IN PLACE.

PED SIGNAL ACTIVATION ON 10/11/06 AT 10:41AM
 ATTENDED BY: GERARDINE DE LENA, PHONG NGUYEN, BEN MURPHY,
 AND TIM WON

CHANGE 3 BY PW 2264J
 HAIGHT PAVING, SEWER, &
 WATER PROJECT

NOTE:
 THIS AUTOCAD DRAWING HAS BEEN REVISED AND REPLOTTED SUBSEQUENT TO INTERNAL ENGINEERING APPROVAL AND SIGN-OFF. FOR THOSE SIGNATURES, SEE THE DRAWING PLOTTED AND ISSUED PREVIOUSLY DURING BIDDING. THE SIGNED DRAWING REMAINS VALID EXCEPT FOR THE CHANGES ONLY AS CLEARLY MARKED ON THIS DRAWING AND ISSUED UNDER THIS LATEST REVISION NUMBER AS SHOWN IN THE TABLE OF REVISIONS LOCATED AT THE LOWER LEFT CORNER OF THE DRAWING. ALL ISSUED REVISIONS SUBSEQUENT TO PREVIOUSLY PLOTTED DRAWING DURING BIDDING REMAIN VALID UNLESS SUPERSEDED BY LATER ISSUED REVISIONS. CHECK ALL ISSUED REVISIONS OF THIS DRAWING.

NO.	DATE	DESCRIPTION	BY	APP.
1	8/9/06	SIGNAL MOD	gd	bc
2	8/1/06	pco1, re-use ex pull box (+dwg corrections)	gd	bc

TABLE OF REVISIONS
 CHECK WITH TRACING TO SEE IF YOU HAVE LATEST REVISION

REFERENCE INFORMATION
 & FILE NO. OF SURVEYS



BUREAU OF ENGINEERING
 DEPARTMENT OF PUBLIC WORKS
 CITY AND COUNTY OF SAN FRANCISCO



DESIGNED:	DATE:	APPROVED:
TP	10/05	
DRAWN:	DATE:	SECTION MANAGER
NL	10/05	
CHECKED:	DATE:	DEPUTY BUREAU MANAGER
BC	10/05	
		CITY ENGINEER

SCALE:
1" = 10 feet
SHEET OF SHEETS
21 OF 71

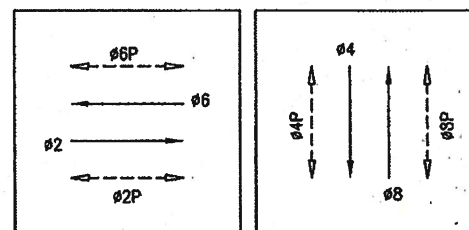
CONTRACT 31
TRAFFIC SIGNAL MODIFICATIONS
FILLMORE ST & HAIGHT ST

SPECIFICATION NO.
0872J
DRAWING NO.
E-6.1
FILE NO.
86,424
REV. NO.
23

OCTOBER 2005

POLE AND EQUIPMENT SCHEDULE										
POLE No.	TYPE OF POLE	VEHICLE SIGNAL					PEDESTRIAN SIGNAL			REMARKS
		No.	TYPE	MOUNTING	VISORS	LOUVERS	No.	TYPE	MOUNTING	
1	1-A (10')	22 81	358" 358"	TV-2-T			69 88	1S-COUNT 1S-COUNT	SP-1-SF (12") SP-1 (22")	
2	EX MARBELITE 1-A (10') EX MARBELITE	EX 21 EX 42	EX 358" EX 358"	TV-1-T TV-1-T			28 89	1S-COUNT 1S-COUNT	SP-1 (22") SP-1-SF (12")	
3	EX MARBELITE	EX 41 EX 62	EX 358" EX 358"				29 48	1S-COUNT 1S-COUNT	SP-1-SF (12") SP-1 (22")	
4	EX MARBELITE	EX 61 EX 82	EX 358" EX 358"				49 68	1S-COUNT 1S-COUNT	SP-1-SF (12") SP-1 (22")	

PHASE DIAGRAM



PHASE SEQUENCE

G	Y	R		HAIGHT ST.
R		G	Y R	FILLMORE ST.
WM	FRH	RH		PED XING FILLMORE ST.
RH		WM	FRH RH	PED XING HAIGHT ST.

CHANGE 3 BY PWA 2264J
HAIGHT PAVING, SEWER, &
WATER PROJECT

NOTE:

THIS AUTOCAD DRAWING HAS BEEN REVISED AND REPLOTTED SUBSEQUENT TO INTERNAL ENGINEERING APPROVAL AND SIGN-OFF. FOR THOSE SIGNATURES, SEE THE DRAWING PLOTTED AND ISSUED PREVIOUSLY DURING BIDDING. THE SIGNED DRAWING REMAINS VALID EXCEPT FOR THE CHANGES ONLY AS CLEARLY MARKED ON THIS DRAWING AND ISSUED UNDER THIS LATEST REVISION NUMBER AS SHOWN IN THE TABLE OF REVISIONS LOCATED AT THE LOWER LEFT CORNER OF THE DRAWING. ALL ISSUED REVISIONS SUBSEQUENT TO PREVIOUSLY PLOTTED DRAWING DURING BIDDING REMAIN VALID UNLESS SUPERSEDED BY LATER ISSUED REVISIONS. CHECK ALL ISSUED REVISIONS OF THIS DRAWING.

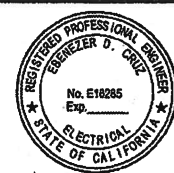
OCTOBER 2005

3. 8/10/05 SPLIT POLES ON THE SOUTHEAST CORNER			
8/9/05	SIGNAL MOD	gd	bc
8/1/06	pcol, dwg corrections	gd	bc
NO.	DATE	DESCRIPTION	BY APP.
TABLE OF REVISIONS			
CHECK WITH TRACING TO SEE IF YOU HAVE LATEST REVISION			

REFERENCE INFORMATION
& FILE NO. OF SURVEYS



BUREAU OF ENGINEERING
DEPARTMENT OF PUBLIC WORKS
CITY AND COUNTY OF SAN FRANCISCO



DESIGNED:	DATE:	APPROVED
TP	10/05	
DRAWN:	DATE:	SECTION MANAGER DATE:
NL	10/05	
CHECKED:	DATE:	DEPUTY BUREAU MANAGER DATE:
BC	10/05	
		CITY ENGINEER DATE:

SCALE:
NONE
SHEET OF SHEETS
22 OF 71

CONTRACT 31	SPECIFICATION NO. 0872J
TRAFFIC SIGNAL MODIFICATIONS	DRAWING NO. E-6.2
FILLMORE ST & HAIGHT ST SCHEDULE	FILE NO. 86,425
	REV. NO. 2 3

CONDUIT AND WIRING SCHEDULE (FURNISH AND INSTALL CONDUIT AND WIRES)																									
CONDUIT RUN NUMBER	1	2	3	4	5	6	7	8	9	10	11	12	13	14	15	16	17	18	19	20	21	22	23	24	25
CONDUIT SIZE (INCH)	2	2	2	2	2	3	2	2	2	2	2	2	2	3	2	2	2	2	2	2	2	2	2	2	2
CONDUIT SIZE (mm)	53	53	53	53	53	77	53	EX	53	53	53	53	53	77	53	53	53	53	53	53	53	53	53	53	53
NOTES																									
SIGNAL 21																									
SIGNAL 42																									
SIGNAL 28																									
SIGNAL 89																									
SIGNAL 41																									
SIGNAL 62																									
SIGNAL 29																									
SIGNAL 48																									
SIGNAL 22																									
SIGNAL 81																									
SIGNAL 69																									
SIGNAL 88																									
SIGNAL 61																									
SIGNAL 82																									
SIGNAL 49																									
SIGNAL 68																									
#14 NEUTRAL																									
#14 SPARE																									
TOTAL #14 WIRES																									
#10 WIRES NEUTRAL																									
#10 WIRES STREET LIGHT																									
#8 WIRES STREET LIGHT																									
#8 WIRES (120 V SERVICE)																									
#6 BSCW																									
INTERCONNECT 12/C CABLE																									

CHANGE 2 BY PW
2264J HAIGHT
PAVING, SEWER, &
WATER PROJECT

NOTE:
THIS AUTOCAD DRAWING HAS BEEN REVISED AND REPLOTTED SUBSEQUENT TO INTERNAL ENGINEERING APPROVAL AND SIGN-OFF. FOR THOSE SIGNATURES, SEE THE DRAWING PLOTTED AND ISSUED PREVIOUSLY DURING BIDDING. THE SIGNED DRAWING REMAINS VALID EXCEPT FOR THE CHANGES ONLY AS CLEARLY MARKED ON THIS DRAWING AND ISSUED UNDER THIS LATEST REVISION NUMBER AS SHOWN IN THE TABLE OF REVISIONS LOCATED AT THE LOWER LEFT CORNER OF THE DRAWING. ALL ISSUED REVISIONS SUBSEQUENT TO PREVIOUSLY PLOTTED DRAWING DURING BIDDING REMAIN VALID UNLESS SUPERSEDED BY LATER ISSUED REVISIONS. CHECK ALL ISSUED REVISIONS OF THIS DRAWING.

SHEET NOTES:

- GROUNDING WIRES ARE NOT INCLUDED IN THIS WIRING SCHEDULE. FOR REQUIREMENTS, SEE DETAIL E-0.5

NO.	DATE	DESCRIPTION	BY	APP.
1	5/1/06	pcot, re-use ex conduit run	gd	bc
TABLE OF REVISIONS				
CHECK WITH TRACING TO SEE IF YOU HAVE LATEST REVISION				



BUREAU OF ENGINEERING
DEPARTMENT OF PUBLIC WORKS
CITY AND COUNTY OF SAN FRANCISCO



DESIGNED: TP	DATE: 10/05	APPROVED: SECTION MANAGER	DATE:
DRAWN: NL	DATE: 10/05	DEPUTY BUREAU MANAGER	DATE:
CHECKED: BC	DATE: 10/05	CITY ENGINEER	DATE:

SCALE: NONE	SHEET OF SHEETS: 23 OF 71
CONTRACT 31	SPECIFICATION NO. 0872J
TRAFFIC SIGNAL MODIFICATIONS	DRAWING NO. E-6.3
FILLMORE ST & HAIGHT ST SCHEDULE	FILE NO. 86,426
	REV. NO. 12

Xref: C:\31.dwg
Logfile: C:\31.dwg
Scale: 40
Model Units: Feet
Drawing Path: V:\0872J Contract 31 Various Locations\J Construction\Change Orders\0872J_E06_pco.dwg
Plot Time: Thu, 01 Jun 2006 - 3:45pm