

SWITCHED OVER 8/3/2016  
DARK @ 10:40 A; 3-COLOR @ 12:02 P  
J. HORNBOSTEL (MTA); L. LIMBO (SFPW);  
S. BUSS & L. WONG (Signal Shop)

NOTE;  
THIS AUTOCAD DRAWING HAS BEEN REVISED AND REPLOTTED  
SUBSEQUENT TO INTERNAL ENGINEERING APPROVAL AND  
SIGN-OFF. FOR THOSE SIGNATURES, SEE THE DRAWING  
PLOTTED AND ISSUED PREVIOUSLY DURING BIDDING. THE  
SIGNED DRAWING REMAINS VALID EXCEPT FOR THE CHANGES  
ONLY AS CLEARLY MARKED ON THIS DRAWING AND ISSUED  
UNDER THIS LATEST REVISION NUMBER AS SHOWN IN THE  
TABLE OF REVISIONS LOCATED AT THE LOWER LEFT CORNER  
OF THE DRAWING. ALL ISSUED REVISIONS SUBSEQUENT TO  
PREVIOUSLY PLOTTED DRAWING DURING BIDDING REMAIN  
VALID UNLESS SUPERSEDED BY LATER ISSUED REVISIONS.  
CHECK ALL ISSUED REVISIONS OF THIS DRAWING.

POLE AND EQUIPMENT SCHEDULE											
POLE No.	TYPE OF POLE	LUMINAIRE VOLTAGE/ WATTAGE	VEHICLE SIGNAL					PEDESTRIAN SIGNAL			REMARKS
			No.	TYPE	MOUNTING	VISORS	LOUVERS	No.	TYPE	MOUNTING	
①	EX MARBELITE STREET LIGHT							68	1S-COUNT 1	SP-1	
②	1-A (7')							49	1S-COUNT 1	TP-1	
③											
④	1-A (10')		22	3S12"	TV-1-T	T		69 88	1S-COUNT 1S-COUNT 1	SP-1(22") SP-1-SF(12")	2
⑤	16-2-100 WITH 20' MAST ARM		24	3S12"	MAS	T					BACKPLATE
⑥	EX MARBELITE STREET LIGHT		21	3S12"	SV-1-T	T		28	1S-COUNT 1	SP-1	
⑦	1-A (10')		42	3S12"	TV-1-T	T		89	1S-COUNT 1	SP-1	
⑧	EX MARBELITE STREET LIGHT		41	3S12"	SV-1-T	T		29 48	1S-COUNT 1S-COUNT 1	SP-1-SF(12") SP-1(22")	2
⑨											

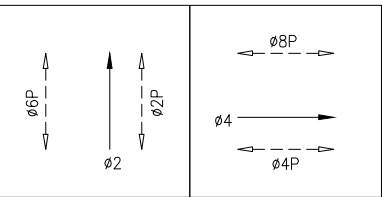
SHEET NOTES

- ① CONTRACTOR TO INSTALL CITY FURNISHED ONE SECTION LED PEDESTRIAN COUNTDOWN SIGNAL MODULE IN CONTRACTOR FURNISHED ONE SECTION PEDESTRIAN SIGNAL HOUSING.
- ② REMOVE EXISTING CABLES IN EXISTING CONDUITS EXCEPT SERVICES TO EXISTING STREETLIGHTS AND INTERCONNECT. PRIOR TO REMOVING EXISTING CABLES IN EXISTING CONDUITS, CONTRACTOR TO FIELD VERIFY AND MAINTAIN EXISTING SERVICES TO STREETLIGHTS AND TRAFFIC CONTROLLER.
- ③ ABANDON EXISTING CONDUIT AND WIRING. CUT EXISTING CONDUIT AND WIRING TO PULLBOX WALL AND CAP ENDS. PRIOR TO ABANDONING OF EXISTING CABLES IN EXISTING CONDUIT, CONTRACTOR TO FIELD VERIFY AND MAINTAIN SERVICES TO STREETLIGHTS AND TRAFFIC CONTROLLER.
- ④ BRING NEW CONDUITS INTO EXISTING PULL BOX. CONTRACTOR SHALL BE CAREFUL TO AVOID DAMAGE TO EXISTING PULL BOX.
- ⑤ CONTROLLER SERVICE POINT IS A PG&E MAN HOLE LOCATED AT THE NORTHEAST CORNER OF FRANKLIN AND WASHINGTON STREETS. CONTRACTOR TO COORDINATE WITH PG&E THROUGH SFPUC FOR ACTIVATION OF SERVICE POINT.
- ⑥ CONTRACTOR SHALL PROVIDE 40A INLINE FUSE AND FUSE HOLDER FOR TRAFFIC SIGNAL SERVICE DISCONNECT IN THE FIRST PULL BOX NEXT TO THE NEW PG&E SERVICE POINT.
- ⑦ CONTRACTOR SHALL COORDINATE WITH PG&E THROUGH SFPUC FOR DEACTIVATION OF SERVICE CONNECTION WORK TO BE COMPLETED AFTER ACTIVATION OF NEW SERVICE POINT. TEN WORKING DAY'S NOTICE IS REQUIRED.

GENERAL NOTES

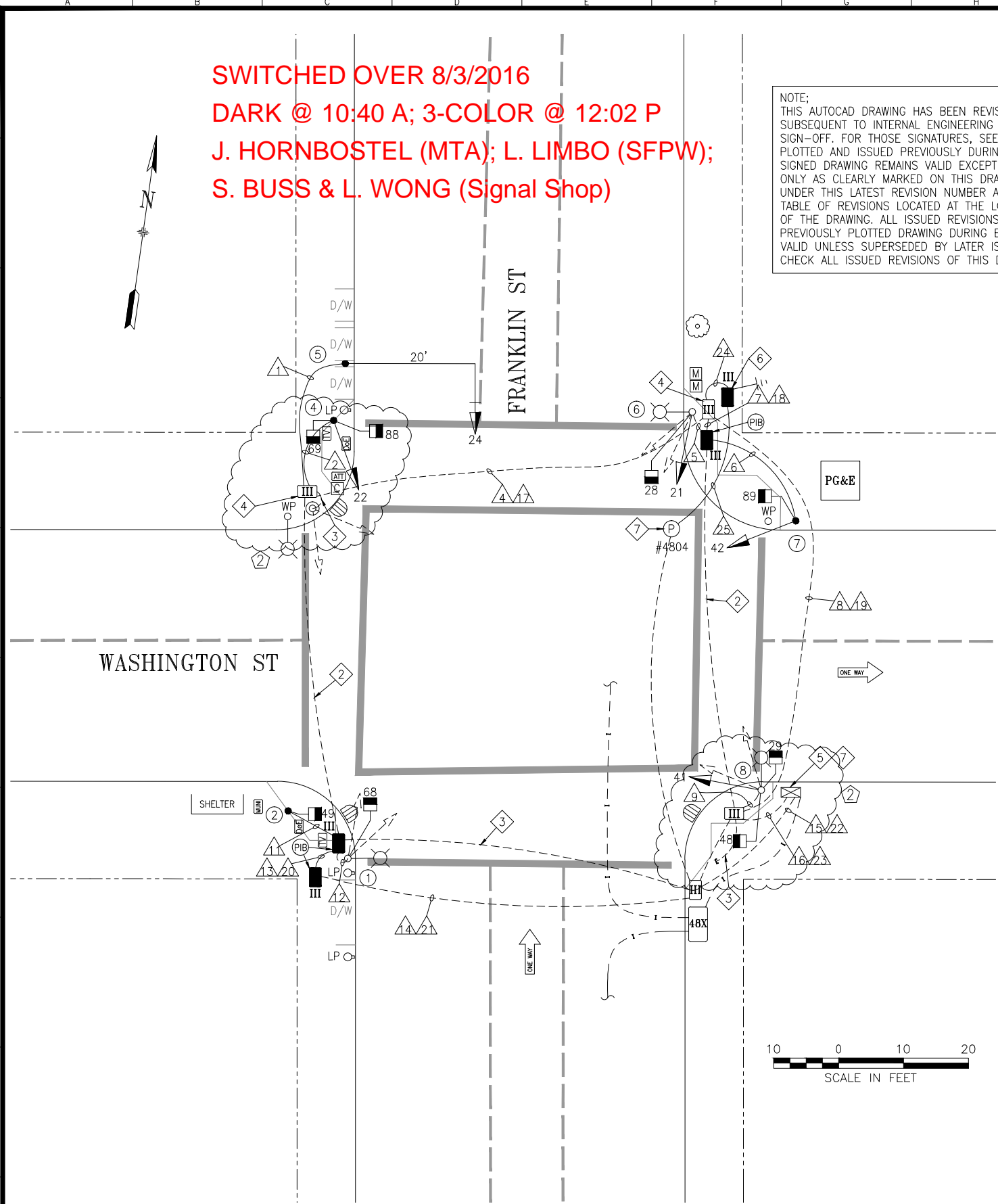
1. CONTRACTOR TO REFER TO DRAWING G-0.4, GENERAL NOTE 15, 36, 44, 45, 46 FOR ADDITIONAL INFORMATION.

PHASE DIAGRAM



PHASE SEQUENCE

G	Y	R		FRANKLIN ST. (NB) - Ø2
R		G	Y R	WASHINGTON ST. (EB) - Ø4
W	FRH	RH		PEDS XING WASHINGTON ST. (ES & WS) - Ø2P & Ø6P
RH		W	FRH RH	PEDS XING FRANKLIN ST. (SS & NS) - Ø4P & Ø8P



NO.	DATE	DESCRIPTION	BY	APP.
5/2016		DELETE POLE 3, RELOCATE 88 TO POLE 4	JH	GD
11/2015		REVISED PG&E SERVICE TO MH #4804	JH	MY

TABLE OF REVISIONS

REFERENCE INFORMATION  
& FILE NO. OF SURVEYS



INFRASTRUCTURE DIVISION  
SAN FRANCISCO PUBLIC WORKS  
CITY AND COUNTY OF SAN FRANCISCO



DESIGNED: DATE: 3/05/2015  
JH/WC  
DRAWN: DATE: 3/05/2015  
SS/WC  
CHECKED: DATE: 3/05/2015  
STL/NW

APPROVED  
SECTION MANAGER DATE:  
DEPUTY DIVISION MANAGER DATE:  
DIVISION MANAGER DATE:

SCALE:  
AS SHOWN  
SHEET OF SHEETS  
44 OF 73

FRANKLIN AND DIVISADERO STREET  
TRAFFIC SIGNAL UPGRADE  
FRANKLIN STREET AND WASHINGTON STREET  
TRAFFIC SIGNAL WORK

CONTRACT NO.  
2596J  
DRAWING NO.  
E-19.0  
FILE NO.  
100,833  
REV. NO.  
2

[illegible]

NOTE;  
THIS AUTOCAD DRAWING HAS BEEN REVISED AND REPLOTTED  
SUBSEQUENT TO INTERNAL ENGINEERING APPROVAL AND  
SIGN-OFF. FOR THOSE SIGNATURES, SEE THE DRAWING  
PLOTTED AND ISSUED PREVIOUSLY DURING BIDDING. THE  
SIGNED DRAWING REMAINS VALID EXCEPT FOR THE CHANGES  
ONLY AS CLEARLY MARKED ON THIS DRAWING AND ISSUED  
UNDER THIS LATEST REVISION NUMBER AS SHOWN IN THE  
TABLE OF REVISIONS LOCATED AT THE LOWER LEFT CORNER  
OF THE DRAWING. ALL ISSUED REVISIONS SUBSEQUENT TO  
PREVIOUSLY PLOTTED DRAWING DURING BIDDING REMAIN  
VALID UNLESS SUPERSEDED BY LATER ISSUED REVISIONS.  
CHECK ALL ISSUED REVISIONS OF THIS DRAWING.

[illegible]