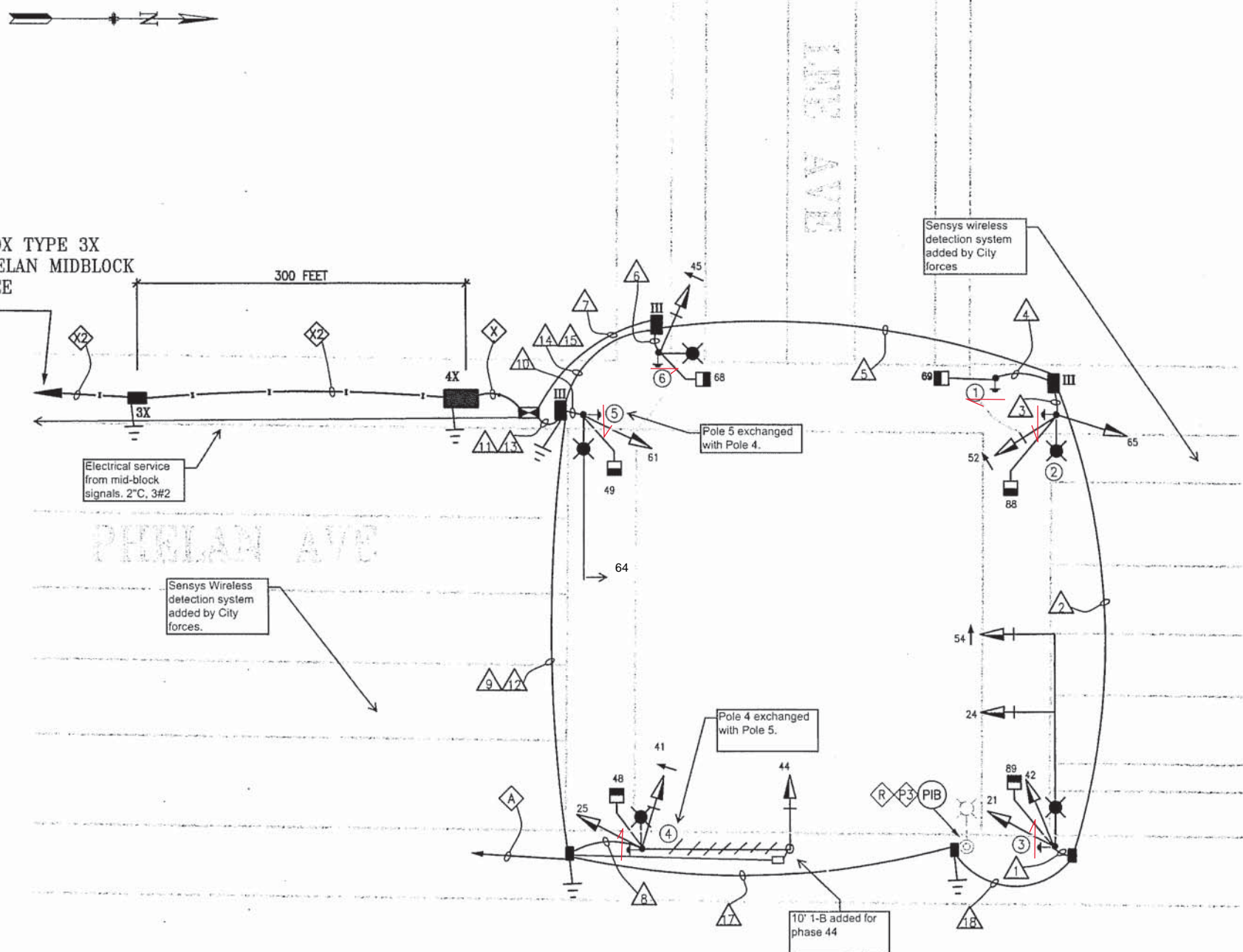


Activated on 7/1/2009

CONTINUE TO PULL BOX TYPE 3X
MIDSPAN TOWARDS PHELAN MIDBLOCK
APPROX. 300 FEET, SEE
SHEET E-2.0 .



AS BUILT

DETAIL SHEET NOTES:

- ⬢ A CONTRACTOR TO COORDINATE WITH PG&E FOR INCOMING SERVICE APPROXIMATELY 200 FT.
- ⬢ X F/1 2-2" HDPE CONDUIT SCHEDULE 80 WITH 3/8" PULL TAPE IN EACH CONDUIT. IN ONE OF EMPTY CONDUITS, F/1 2#8 STRANDED COPPER (ONE WIRE SHALL BE BLACK AND THE OTHER WHITE INSULATION). AND 1#10 STRANDED WITH GREEN INSULATION.
- ⬢ X2 F/1 4-2" HDPE CONDUIT SCHEDULE 80 WITH 3/8" PULL TAPE IN EACH CONDUIT TO THE NEAREST INTERCONNECT PULLBOX. IN ONE OF EMPTY CONDUITS, F/1 2#8 STRANDED COPPER (ONE WIRE SHALL BE BLACK AND THE OTHER WHITE INSULATION) AND 1#10 STRANDED WITH GREEN INSULATION.
- ⬢ P3 RETAIN EX SL SERVICE WIRES. SPLICE AND EXTEND TO NEW SL LOCATION. F/1 WIRES, FUSE, AND FUSEHOLDER PER CCSF DPW STANDARD PLAN 87,203.
- ⬢ R CONTRACTOR TO REMOVE AND SALVAGE LIGHT POLES WITH LUMINAIRE AND DELIVER TO BLHP. R/C SL FOUNDATION. R/C WIRING AND MAINTAIN EXISTING CIRCUIT OF OTHER EXISTING STREET LIGHT IN OPERABLE CONDITION.



TABLE OF REVISIONS			
NO.	DATE	DESCRIPTION	BY APP.
1	4/23/19	ADD APS PER SRC 2018-308	Dyeung GDeleon

REFERENCE INFORMATION
& FILE NO. OF SURVEYS



DEPARTMENT OF PARKING AND TRAFFIC
DIVISION OF TRAFFIC ENGINEERING
CITY AND COUNTY OF SAN FRANCISCO

DESIGNED: DATE:
MG/JS 9/08
DRAWN: DATE:
MG/TL 9/08
CHECKED: DATE:
AH/SL 9/08

APPROVED
SECTION ENGINEER
CITY TRAFFIC ENGINEER

SCALE:
1" = 10'
SHEET OF SHEETS
10 OF 11

PHELAN AVENUE TRAFFIC SIGNAL
NEW TRAFFIC SIGNAL AND SIGNAL MODIFICATION
LEE AVENUE EXTENSION AND
PHELAN AVENUE

SPECIFICATION NO.
1504J
DRAWING NO.
E-3.0
FILE NO.
REV. NO. 1

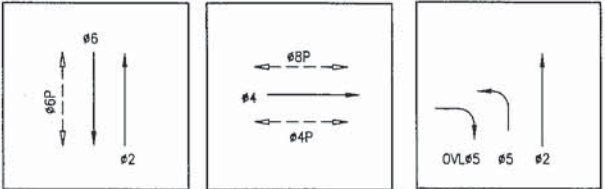
CONDUIT AND WIRING SCHEDULE (F/I)																	
CONDUIT RUN NUMBER	1	2	3	4	5	6	7	8	9	10	11	12	13	14	15	16	17
CONDUIT SIZE (INCH)	2	2	2	2	3	2	3	2	2	2	3	2	2	2	1.5	1.5	1.5
NOTES	PVC	PVC	PVC	PVC	PVC	PVC	PVC	PVC	PVC	PVC	PVC	SPARE PVC	SPARE PVC	SPARE PVC	GRSC	GRSC	GRSC
POLE																	
3	VEH SIGNAL 21	3	3		3	3											
	VEH SIGNAL 54	3	3		3	3											
	VEH SIGNAL 24	3	3		3	3											
	VEH SIGNAL 42	3	3		3	3											
	PED SIGNAL 89	2	2		2	2											
2	PED PUSH BUTTON	2	2		2	2											
	VEH SIGNAL 65			3	3	3											
	VEH SIGNAL 52			3	3	3											
	PED SIGNAL 88			2	2	2											
1	PED SIGNAL 69			2	2	2											
	PED PUSH BUTTON			2	2	2											
6	VEH SIGNAL 45				3	3											
	PED SIGNAL 68				2	2											
	PED PUSH BUTTON				2	2											
4	VEH SIGNAL 25						3	3		3							
	VEH SIGNAL 41						3	3		3							
	VEH SIGNAL 44						3	3		3							
	PED SIGNAL 48						2	2		2							
	PED PUSH BUTTON						2	2		2							
5	VEH SIGNAL 61								3	3							
	PED SIGNAL 49								2	2							
	PED PUSH BUTTON								2	2							
#14 WIRES SPARE		3			3	3			3								
	#14 WIRES NEUTRAL	4		2	1	2		3		2							
	TOTAL #14 WIRES	20	19	12	5	33	9	40	16	16	9	23					
	#10 WIRES NEUTRAL		1			2		3		1		2					
	#10 WIRES STREET LIGHT	2		2		2		2		2							
#8 WIRES STREET LIGHT		2				2				2					2	2	2
	#8 WIRES (120V SERVICE)																
#6 BSCW C																	
CONDUIT RUN NUMBER	1	2	3	4	5	6	7	8	9	10	11	12	13	14	15	16	17

Swapped poles and add signal 64 per existing notes on page 1

POLE AND EQUIPMENT SCHEDULE (F/I)											
POLE No.	TYPE OF POLE	LUMINAIRE VOLTAGE/WATTAGE	VEHICLE SIGNAL					PEDESTRIAN SIGNAL			REMARKS
			No.	TYPE	MOUNTING	VISORS	LOUVERS	No.	TYPE	MOUNTING	
1	1-A (7')							69	1S-COUNT	TP-1	PPB APS-2W
2	STREET LIGHT	HPS 120V/200W	65 52	3S12" 3S12"LA	SV-2-TA	T		88	1S-COUNT	SP-1	PPB APS-2W
3	19-3-100 MAST ARM 30'	HPS 120V/200W	42 21 54 24	3S12" 3S12" 3S12"LA 3S12"	SV-2-TA MAS MAS	T		89	1S-COUNT	SP-1	BACK PLATE BACK PLATE PPB APS-2W
4	19-3-100 MAST ARM 30' SL	HPS 120V/200W	41 25	3S12" 5S12"RA 3S12"	MAS SV-2-TA	T		48	1S-COUNT	SP-1	BACK PLATE PPB APS-2W
5	STREET LIGHT 19-2-100 W/ 20' MA AND 12'LA	HPS 120V/200W	61 64	3S12" 3S12"	SV-1-T MAS	T T		49	1S-COUNT	SP-1	PPB APS-2W
6	STREET LIGHT	HPS 120V/200W	45	5S12"RA	SV-1-T	T		68	1S-COUNT	SP-1	PPB APS-2W

Pole 7	1-A	44	3S12"	TV-1	T
--------	-----	----	-------	------	---

PHASE DIAGRAM



PHASE SEQUENCE

G	Y	R	G	PHELAN AVE NB THRU
				PHELAN AVE NBLT
				LEE ST EBRT
G	Y	R	G	PHELAN AVE SB THRU
				LEE ST EB
WM	FRH	RH		PED XING LEE ST W/S
				PED XING PHELAN

DETAIL SHEET NOTES:

- LUMINAIRE AND MAST ARM NOT IN THE SAME VERTICAL PLANE
- GROUNDING WIRES ARE NOT SHOWN IN THIS WIRING SCHEDULE. FOR REQUIREMENTS SEE DETAIL 5 E-0.5

AS BUILT

