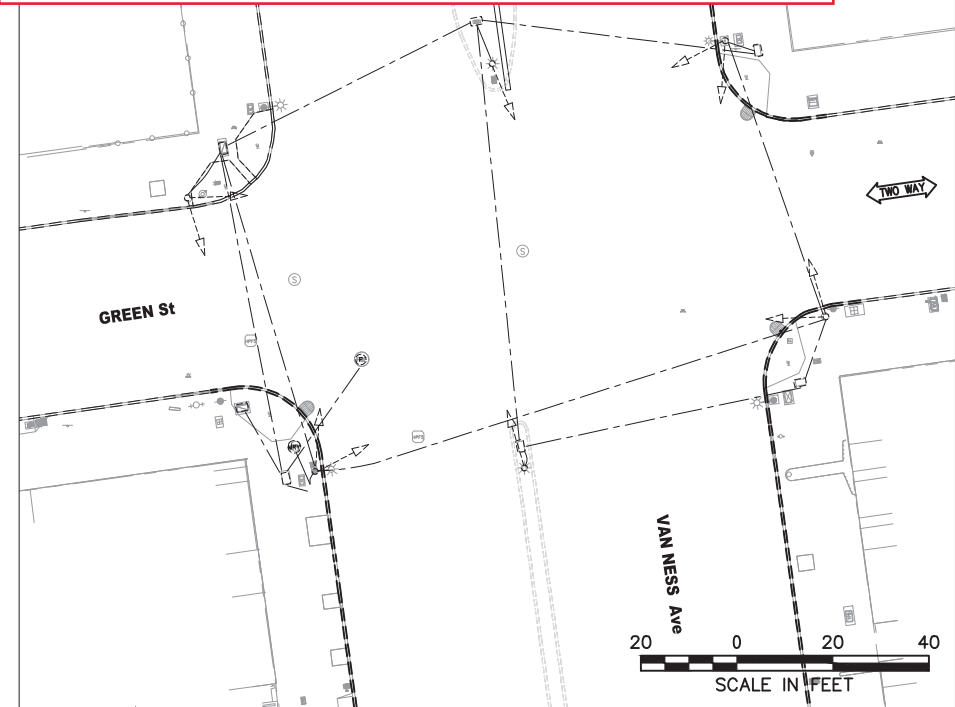
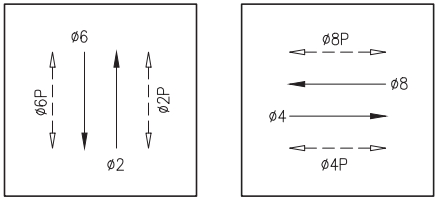


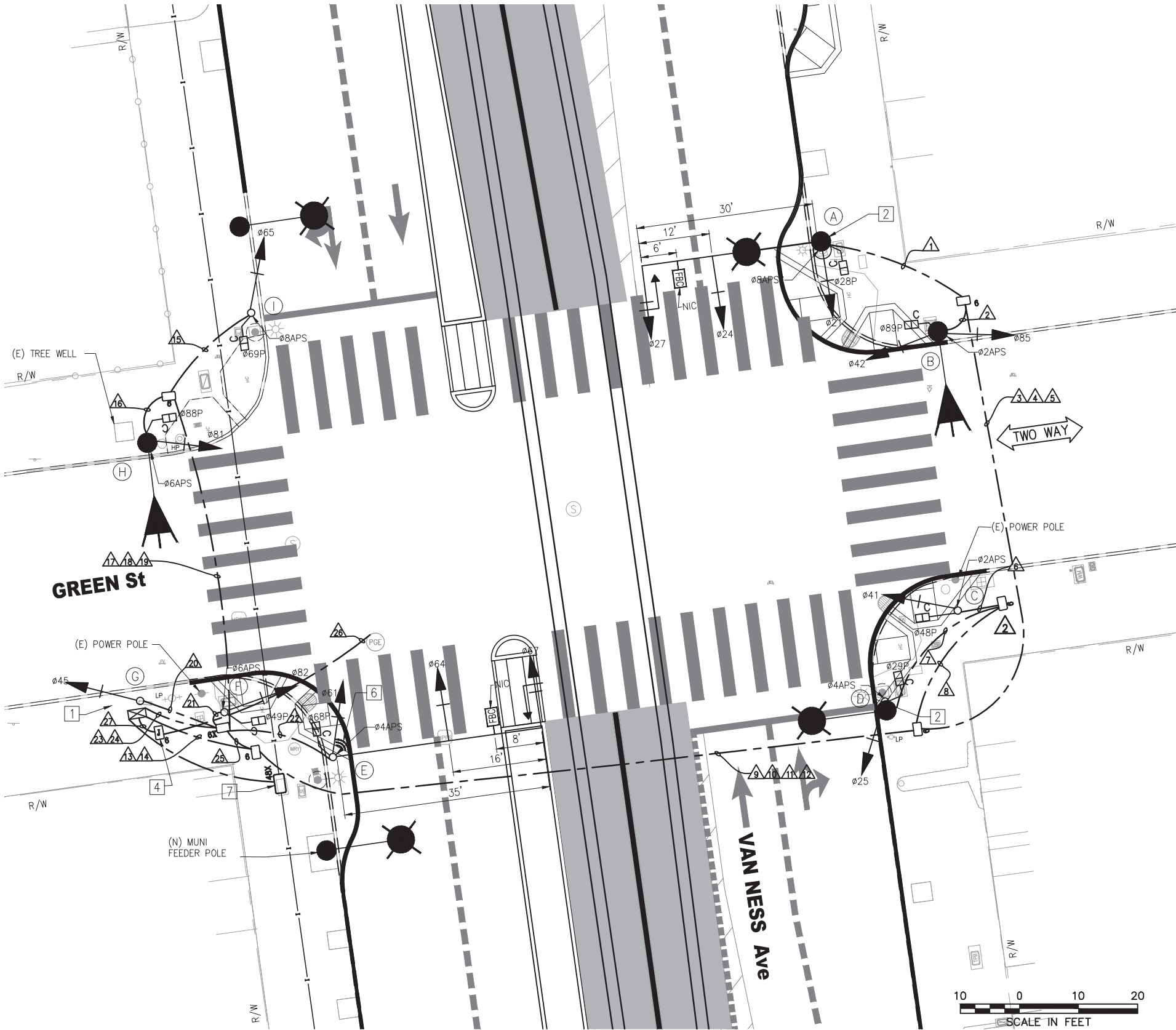
4/22/21 Traffic Signal Switchover
10:14am Dark, 10:33am Emergency Flash, 10:45am 3-color. APS not installed yet.
Staff
Ken Kwong (TE), Kevin Shue (TE), Manito Velasco (TE),
Kristen Nugent (TE), Phong Nguyen (Signal Shop),
Dennis Verhalen (Signal Shop), Glenn Wilson (CPC),
Cameron Peters (Phoenix), Wilson Lew (Phoenix)



EXISTING EQUIPMENT



PHASE DIAGRAM



FOR ORIGINAL SIGNATURES, SEE ET-125.0, REV 0

3	11/10/20	CONFORMED SET	KK	MV	CL
2	7/18/19	LATEST DRAWING	KK	MV	CL
SK	9/28/18	POLE LAYOUT - SL POLE ON SE CORNER MOVED TO NE CORNER AND OTHER POLES PER POLE LAYOUT WALKTHRU	KK	MV	CL
1	03/2018	ADDED FBC SIGNS ON POLES A AND E; ADDED TYPE 6X PULLBOX	KK	MV	CL
NO.	DATE	DESCRIPTION	REVISED	CHECKED	APPROVED
REVISIONS					

DESIGNED	K. KWONG
DRAWN	K. KWONG
CHECKED	R. ZAMORA/G. LIU
REVIEWED	C. LIU
RECOMMENDED	P. WILSON
APPROVED	R. OLEA
DATE	12/4/2015



CITY AND COUNTY OF SAN FRANCISCO
MUNICIPAL TRANSPORTATION AGENCY

APPROVED

for the DIRECTOR OF TRANSPORTATION

MUNI BUS RAPID TRANSIT SYSTEM
VAN NESS CORRIDOR TRANSIT IMPROVEMENT PROJECT

GREEN STREET
TRAFFIC SIGNAL WORK

1289

ET-125.0

ET-204

REVISION

3

I:\T_E_FILES\SPo\Projects\Van Ness BRT\Signal Design\CADD\ CPTB401ETBS - 100% Rev. 3-3-21.dwg KKWONG Tue Mar 09,2021 - 12:17 pm

BORDER REVISED 11/17/05

F:\T.E. FILES\Spa\Projects\Van Ness BR\Signal Design\CADD\ CPTB401ETBS - 100% Rev. 3-3-21.dwg KKWONG Tue Mar 09,2021 - 12:17 pm

POLE AND EQUIPMENT SCHEDULE													
POLE NO.	POLE STANDARD			VEHICLE SIGNAL					PEDESTRIAN SIGNAL			HPS LUMINAIRE (WATTS)	SPECIAL REQUIREMENTS
	TYPE	SIG. MA (FEET)	OCS SL	No.	TYPE	MOUNTING	VISORS	LOUVERS	No.	TYPE	MOUNTING		
Ⓐ	SIGNAL, SL & OCS COMBO POLE	30	2400 242	21 24 27	3S12" 3S12" 3S12"GUA	SV-1-T MAS MAS	T T T		28	1S-COUNT	SP-1	-	STRAIGHT HORIZONTAL SIGNAL MA MOUNT AT 21' HIGH SEE ST PLANS FOR POLE DETAILS APS Ⓢ TENON FOR FUTURE FBC MIDWAY BETWEEN MAS SIGNALS
Ⓑ	NEW SL (CITY STD)	-		42 85	3S12" 3S12"	SV-2-TA	T T		89	1S-COUNT	SP-1	-	APS Ⓢ
Ⓒ	1-A (10')	-		41	3S12"	TV-1-T	T		48	1S-COUNT	SP-1	-	APS Ⓢ
Ⓓ	SIGNAL, SL & OCS COMBO POLE	-	2360 238	25	3S12"	SV-1-T	T		29	1S-COUNT	SP-1	-	APS Ⓢ
Ⓔ	SPECIAL MAST ARM POLE (23-4-100)	35		61 64 67	3S12" 3S12" 3S12"GUA	SV-1-T MAS MAS	T T T		68	1S-COUNT	SP-1	-	STRAIGHT HORIZONTAL SIGNAL MA MOUNT AT 21' HIGH APS Ⓢ TSP Ⓢ TENON FOR FUTURE FBC MIDWAY BETWEEN MAS SIGNALS
Ⓕ	1-A (10')	-		82	3S12"	TV-1-T	T		49	1S-COUNT	SP-1	-	APS Ⓢ
Ⓖ	1-A (10')	-		45	3S12"	TV-1-T	T						
Ⓗ	NEW SL (CITY STD)	-	152	81	3S12"	SV-1-T	T		88	1S-COUNT	SP-1	-	APS Ⓢ
Ⓛ	1-A (10')	-		65	3S12"	TV-1-T	T		69	1S-COUNT	SP-1	-	APS Ⓢ

MOUNT SIGNAL 27 BETWEEN YELLOW AND GREEN ⚠

MOUNT SIGNAL 67 BETWEEN YELLOW AND GREEN ⚠

- *OTHER REQUIREMENTS ARE COVERED BY NOTES, LEGEND, SPECIAL PROVISIONS, AND STANDARD SPECIFICATIONS.
FOR TYPE OF STANDARD, VEHICLE AND PEDESTRIAN SIGNAL MOUNTING, SEE CALTRANS STANDARD PLANS OR DETAIL DRAWINGS.
- Ⓢ INSTALL APS WIRING AS SHOWN IN CONDUIT AND WIRING SCHEDULE. CITY FORCES TO INSTALL CITY FURNISHED APS UNIT.
 - Ⓢ INSTALL CITY FURNISHED TSP WIRING FROM TS OR COMBINED POLES WITH 3 FEET OF SLACK TO TS CABINET.
 - Ⓢ INSTALL CITY FURNISHED TRAFFIC CAMERA AND CONTRACTOR FURNISHED WIRING.
 - Ⓢ FOR STREETLIGHT WORK, SEE SL-SERIES PLANS.

FOR ORIGINAL SIGNATURES, SEE ET-125.1, REV 0

3	11/10/20	CONFORMED SET: UPDATED WITH RFI #998	KK	MV	CL
2	7/18/19	LATEST DRAWING	KK	MV	CL
SK	9/28/18	POLE LAYOUT - POLE B IS A SL POLE (MOVED FROM SE CORNER) & POLE C IS A 1-A POLE (MOVED FROM NEC)	KK	MV	CL
1	03/2018	UPDATED POLE STANDARD AND SPECIAL REQUIREMENT;	KK	MV	CL
		UPDATED POLES A AND E; ADDED FBC TENON NOTE			
NO.	DATE	DESCRIPTION	REVISED	CHECKED	APPROVED
REVISIONS					

DESIGNED	K. KWONG
DRAWN	K. KWONG
CHECKED	R. ZAMORA/C. LIU
REVIEWED	C. LIU
RECOMMENDED	P. WILSON
APPROVED	R. OLEA
DATE	12/4/2015



CITY AND COUNTY OF SAN FRANCISCO
MUNICIPAL TRANSPORTATION AGENCY

APPROVED

for the DIRECTOR OF TRANSPORTATION

MUNI BUS RAPID TRANSIT SYSTEM
VAN NESS CORRIDOR TRANSIT IMPROVEMENT PROJECT

GREEN STREET
CONDUCTOR POLE AND EQUIPMENT SCHEDULES

1289

ET-125.1

ET-204

REVISION

3

[illegible]

2	11/10/20	CONFORMED SET: UPDATED WITH RFL#591	KK	MV	CL
1	7/18/19	LATEST DRAWING	KK	MV	CL
NO.	DATE	DESCRIPTION	REVISED	CHECKED	APPROVED
REVISIONS					

DESIGNED	K. KWONG
DRAWN	K. KWONG
CHECKED	R. ZAMORA/C. LIU
REVIEWED	C. LIU
RECOMMENDED	P. WILSON
APPROVED	R. OLEA
DATE	12/4/2015



APPROVED

for the DIRECTOR OF TRANSPORTATION

GREEN STREET CONDUIT & WIRING SCHEDULES

1289

ET-125.2

ET-204

REVISION

2