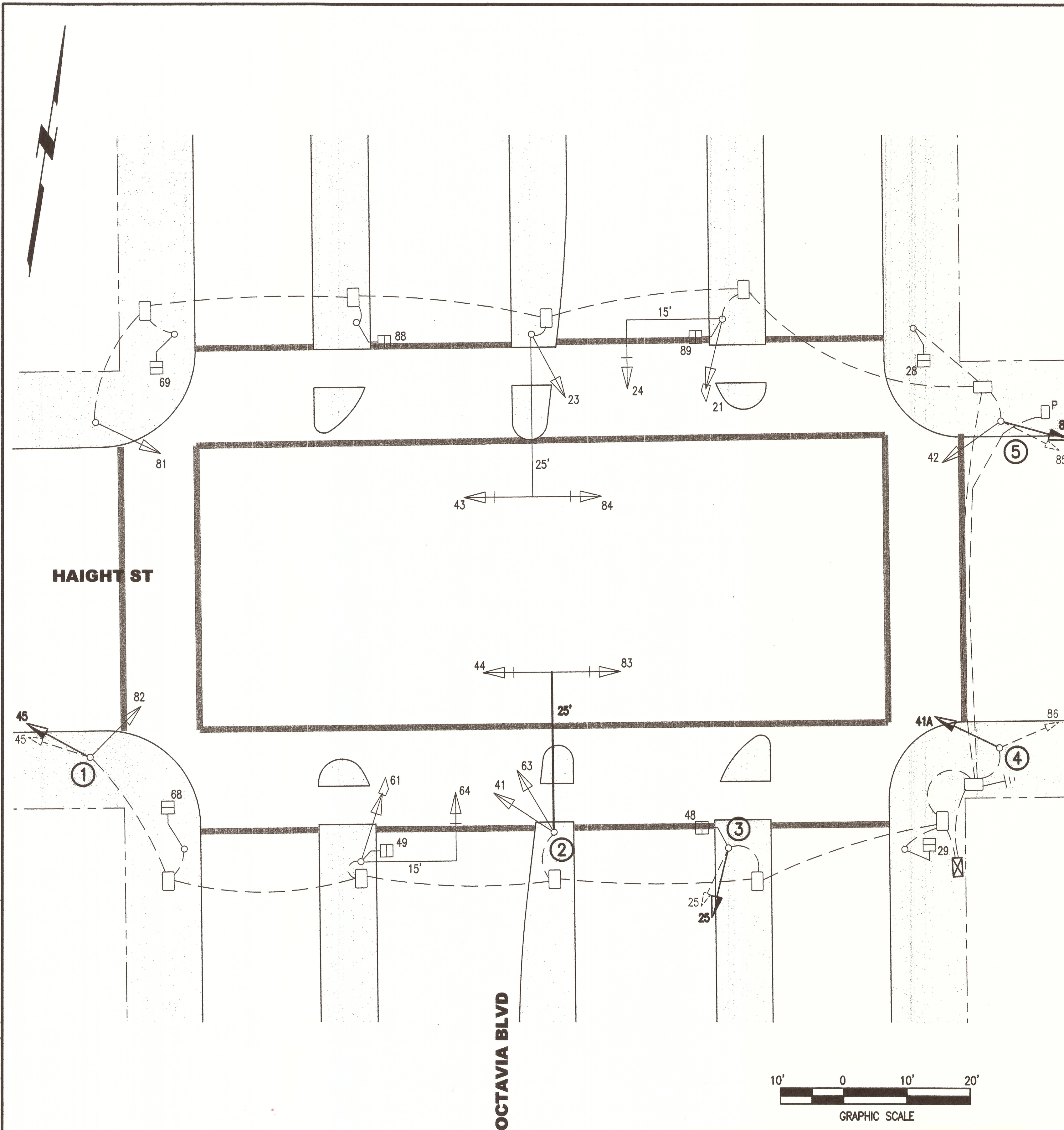


C:\Users\mgreen\Desktop\Wkt & Hgght\ES04\_OCTAVIA HAIGHT.dwg mgreen Tue Jul 16, 2013 - 2:08 pm



FOR ORIGINAL SIGNATURES, SEE CL-24584 REV 0

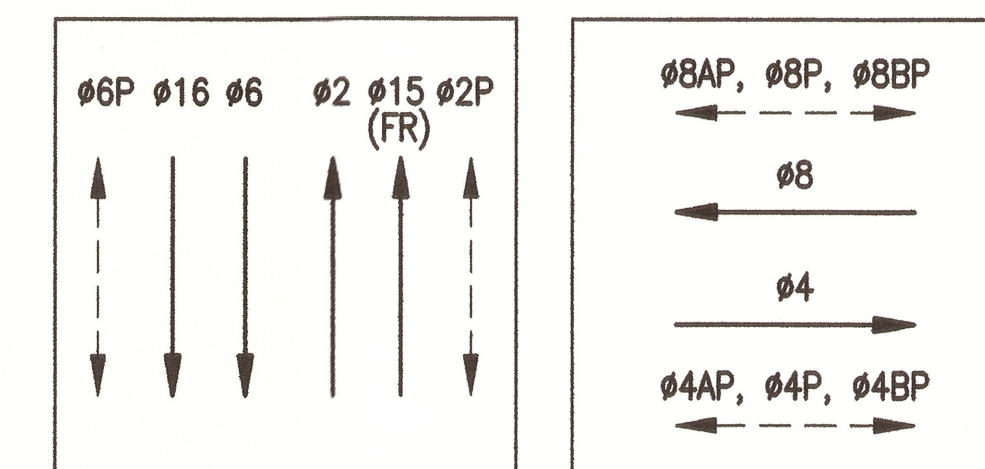
### NOTES:

1. DISCONNECT (E) WIRES FROM (E) SIGNAL HEAD AND RECONNECT TO (N) SIGNAL HEAD. REUSE (E) MOUNTING BRACKET.
2. RELABEL (E) WIRES FOR VEHICLE SIGNAL 86 AS VEHICLE SIGNAL 41A IN BOTH PULL BOX AND I/C.
3. R/S 30-FT MAST ARM AND F/I 25-FT MAST ON POLE 2. RELOCATE (E) VEHICLE SIGNALS 44 & 83 WITH (E) MAS MOUNTING BRACKETS FROM (E) TO (N) MAST ARM, AND RECONNECT (E) WIRES. SIGNAGE ON (E) MAST ARM TO BE RELOCATED TO (N) MAST ARM BY SFMTA SIGN SHOP. CONTRACTOR SHALL CONTACT SFMTA SIGN SHOP THROUGH THE ENGINEER A MINIMUM OF 5 DAYS IN ADVANCE TO SCHEDULE THE WORK.
4. SEE AS-BUILT DRAWINGS DPW FILE NOS. 83779, 83780 & 83781 FOR REFERENCE.

### POLE AND EQUIPMENT SCHEDULE (CONTRACT WORK IS SHOWN IN BOLD)

POLE No	POLE TYPE (& ACCESSORIES)	VEHICLE SIGNAL				PEDESTRIAN SIGNAL			REMARKS
		No	TYPE	MOUNTING	VISORS	No	TYPE	MOUNTING	
①	(E) TYPE 1-A (10')	<b>45</b> <b>45</b> 82	<b>3S8" (R/S)</b> <b>3S12" (F/I)</b> 3S12"	TV-2-T	<b>T (R/S)</b> <b>T (F/I)</b> T	---	---	---	①
②	(E) MUNI TROLLEY POLE 99 <b>30-FT MAST ARM (R/S)</b> <b>25-FT MAST ARM (F/I)</b>	41 63 44 83	3S12" 3S12" 3S12" 3S12"	SV-1 SV-1 MAS MAS	T T T T	---	---	---	③
③	(E) TYPE 1-A (10')	<b>25</b> <b>25</b>	<b>3S8" (R/S)</b> <b>3S12" (F/I)</b>	TV-1-T	<b>T (R/S)</b> <b>T (F/I)</b>	48	1S-COUNT	SP-1-T	①
④	(E) MUNI TROLLEY POLE 71	<b>86</b> <b>41A</b>	<b>3S8" (R/S)</b> <b>3S12" (F/I)</b>	<b>SV-1-T (R/S)</b> <b>SV-1-T (F/I)</b>	<b>T (R/S)</b> <b>T (F/I)</b>	---	---	---	① ②
⑤	(E) MUNI TROLLEY POLE 68	<b>85</b> <b>85</b> 42	<b>3S8" (R/S)</b> <b>3S12" (F/I)</b> 3S12"	SV-2-TA	<b>T (R/S)</b> <b>T (F/I)</b> T	---	---	---	①

### PHASE DIAGRAM



### PHASE SEQUENCE

G		Y	R			OCTAVIA STREET (NB & SB - 02 & 06)
R			G	Y	R	HAIGHT STREET (EB & WB - 04 & 08)
WM	FRH	RH			PED XING HAIGHT STREET (E/S & W/S - 02P & 06P)	
RH			WM	FRH	RH	PED XING OCTAVIA STREET (S/S & N/S - 04P & 08P)

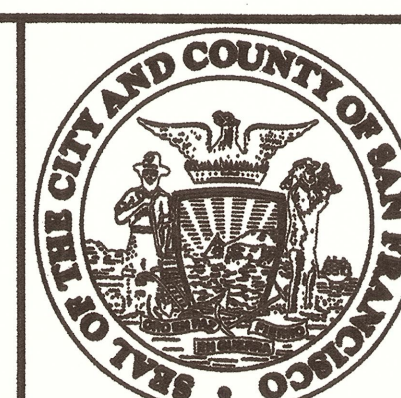
**AS BUILT**  
A. RUIZ CONSTRUCTION CO.  
& ASSOC., INC.

*[Signature]*  
DATE: 8/15/13

NO.	DATE	DESCRIPTION	REVISED	CHECKED	APPROVED
AS	3/8/2016	AS-BUILT WITH NO CHANGES			



DESIGNED	<i>[Signature]</i>
DRAWN	<i>[Signature]</i>
CHECKED	<i>[Signature]</i>
REVIEWED	<i>[Signature]</i>
RECOMMENDED	<i>[Signature]</i>
APPROVED	<i>[Signature]</i>
DATE	6/23/13



CITY AND COUNTY OF SAN FRANCISCO  
**MUNICIPAL TRANSPORTATION AGENCY**

APPROVED  
*[Signature]*  
for the DIRECTOR of TRANSPORTATION

MUNI METRO SYSTEM  
**MARKET AND HAIGHT STREETS  
TRANSIT AND PEDESTRIAN IMPROVEMENT PROJECT**

**HAIGHT AND OCTAVIA  
TRAFFIC SIGNAL MODIFICATION WORK**

1276

24584

REVISION  
ES-04  
ES-04 AB