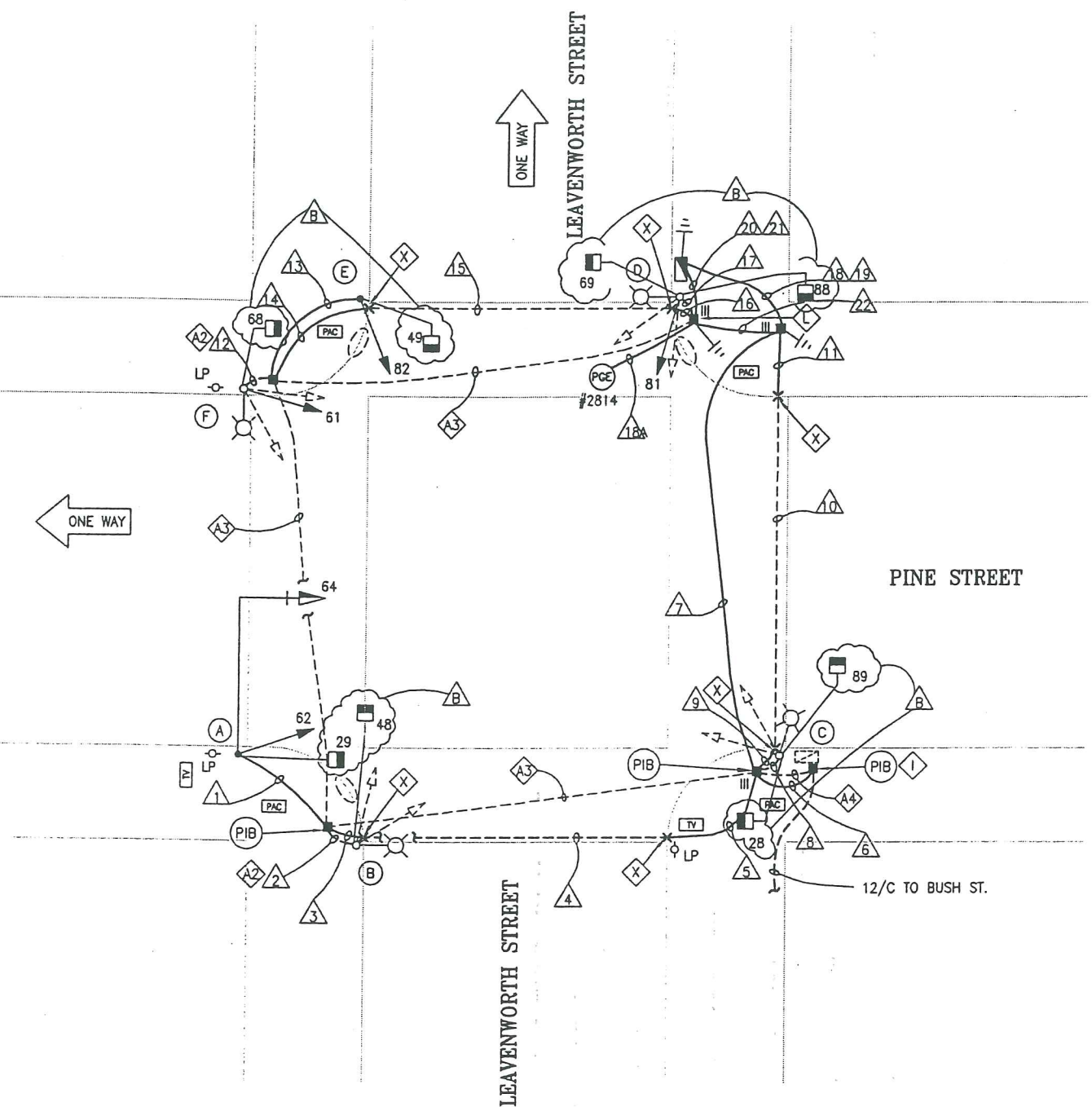
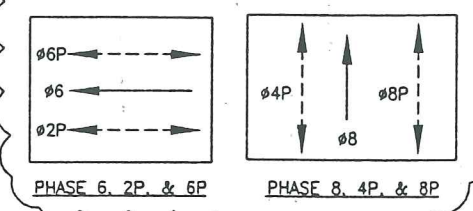


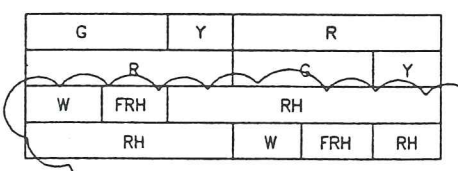
SWITCHED OVER ON 3/12/2002 FLASH @ 16:56
-BED 3-COLOR @ 10:57



PHASE DIAGRAM



PHASE SEQUENCE



DETAIL NOTES:

- A2 EX CONDUIT AND WIRING. R/C EX TS WIRING. SL WIRING TO REMAIN. F/I NEW WIRING AS NOTED.
- A3 EX CONDUIT AND WIRING. R/C EX TS WIRING. EX SL WIRING TO REMAIN.
- I EXTEND 12/C INTERCONNECT TO NEW IC LOCATION. SPLICE TO EX 12/C TO MAINTAIN INTERCONNECT SYSTEM.
- L F/I IN-LINE FUSE HOLDER W/ 40A FUSE FOR IC SERVICE. SPLICE NEW WIRES TO EX PG&E SERVICE TO SUPPORT NEW IC. F/I GROUND ROD.
- X EX 2 1/2" GRSC TERMINATED AND CAPPED 1 FT INSIDE EACH CURB. THE LOCATION OF THE EX CONDUIT IS MARKED WITH A "T" AT THE CURB. F/I 2 1/2" CONDUIT TO EXTEND THE EX CONDUIT TO NEW PULL BOX LOCATIONS AS SHOWN ON THIS DWGS.

NO.	DATE	DESCRIPTION	BY	APP.
1	5/13/01	PCO #2 ADDITIONAL PEDESTRIAN SIGNAL	NL	SL
2	5/22/01	PCO #1 MSF & HOMERUM	SL	SL

TABLE OF REVISIONS
CHECK WITH TRACING TO SEE IF YOU HAVE LATEST REVISION

REFERENCE INFORMATION
& FILE NO. OF SURVEYS



BUREAU OF ENGINEERING
DEPARTMENT OF PUBLIC WORKS
CITY AND COUNTY OF SAN FRANCISCO



DESIGNED: DATE:	APPROVED
BD/EF 7/2000	SECTION MANAGER DATE:
DRAWN: DATE:	DIVISION MANAGER DATE:
JE/RT 7/2000	CITY ENGINEER DATE:
CHECKED: DATE:	
NKS 7/2000	







SCALE:
1" = 10'-0"
SHEET OF SHEETS
18 OF 62

PINE STREET TRAFFIC SIGNAL UPGRADE LEAVENWORTH AND PINE STREETS

SPECIFICATION NO. 1986N
DRAWING NO. E-17
FILE NO. 74458
REV. NO. B

EXTERNAL REFERENCES: T33422.dwg
FONTS USED: ROMANS.SHY ROMANS.ASH ROMANS.BAT ROMANS.LAT
SCALE FACTOR: 120
PLOT SCALE: 120
ORIGIN: SECTION
FILE NAME: E-17.dwg
DATE: May 22 2001 15:30

CONDUIT AND WIRING SCHEDULE																								
CONDUIT RUN NUMBER	1	2	3	4	5	6	7	8	9	10	11	12	13	14	15	16	17	18	19	20	21	22		
CONDUIT SIZE (INCH)	2	EX	2 1/2	EX	2 1/2	2	2	EX	2 1/2	EX	2 1/2	EX	2	2 1/2	EX	2 1/2	EX	2	1 1/2	3	3	2	2	
CONDUIT SIZE (mm)																								
NOTES		A2						A2			A2						A2	P		P	P	P	P	
#14 WIRES																								
SIGNAL 64	3		3	3	3					3	3	3								3				
SIGNAL 62	3		3	3	3					3	3	3								3				
SIGNAL 29	2		2	2	2					2	2	2								2				
SIGNAL 48		2	2	2	2					2	2	2								2				
SIGNAL 89								2	2	2	2	2								2				
SIGNAL 28								2	2	2	2	2								2				
SIGNAL 61													3		3	3	3				3			
SIGNAL 68												2		2	2	2	2				2			
SIGNAL 49														2	2	2	2				2			
SIGNAL 82														3	3	3	3				3			
SIGNAL 88																		2			2			
SIGNAL 81																		3			3			
SIGNAL 69																		2			2			
SPARE				3	3	3					3	3	3							3	3			
#14 WIRES NEUTRAL	3	1								2		2						3						
TOTAL #14 WIRES	8	4	12	12	12			7	18	18	18	4	4	9	9	9	4			18	15			
#10 WIRES NEUTRAL			1	1	1					1	1	1			1	1	1			1	2			
#8 WIRES (120V SERVICE)																			2			2		
#8 WIRES (STREET LTG)																								
#6 BSCW																			1	1	1	1		
12/C CONDUCTOR CABLE						2	2											2						
1/4" (6.35mm) PULL ROPE			1	1	1					1	1	1			1	1	1			1	1			

POLE AND EQUIPMENT SCHEDULE											
POLE No.	TYPE OF POLE	VEHICLE SIGNAL			PEDESTRIAN SIGNAL			PEDESTRIAN PUSHBUTTON (PPB)	LUMINAIRE (HPS)		REMARKS
		No.	TYPE	MOUNTING (F/I)	No.	TYPE	MOUNTING (F/I)		VOLTAGE	WATTS	
A	16-1-70 20' MAST ARM	64	3S12" 	MAS	29	1S-IN	SP-1				BACKPLATE
		62	3S8" 	SV-1-T							
B	EX SL			SP-1	48	1S-IN	SP-1				
C	EX SL			SP-1	28	1S-IN	SP-1				
					89	1S-IN	SP-1				
D	EX SL	81	3S8" 	SV-1-T	69	1S-IN	SP-1				
					88	1S-IN	SP-1				
E	1-A (10')	82	3S8" 	TV-1	49	1S-IN	SP-1				
F	EX SL	61	3S8" 	SV-1-T	68	1S-IN	SP-1				

DETAIL NOTES:

- A2 EXCONDUIT AND WIRING, R/C EX TS WIRING. SL WIRING TO REMAIN. F/I NEW WIRING AS NOTED.
- P POLYVINYL CHLORIDE (PVC) CONDUIT SCHEDULE 80
- V1 LED RED, INCANDESCENT YELLOW, AND LED GREEN
- V3 LED RED, LED YELLOW, AND LED GREEN

NO.	DATE	DESCRIPTION	BY	APP.
1	8/13/01	PCO #2 ADDITIONAL PEDESTRIAN SIGNAL	HL	SL
2	3/22/01	PCO #1 MSF & HOMERUN	SL	SL

REFERENCE INFORMATION
& FILE NO. OF SURVEYS



BUREAU OF ENGINEERING
DEPARTMENT OF PUBLIC WORKS
CITY AND COUNTY OF SAN FRANCISCO



DESIGNED: DATE: 7/2000
BD/EF
DRAWN: DATE: 7/2000
RT
CHECKED: DATE: 7/2000
NKS

APPROVED
SECTION MANAGER DATE:
DIVISION MANAGER DATE:
CITY ENGINEER DATE:

SCALE:
NONE
SHEET OF SHEETS
19 OF 62

**PINE STREET
TRAFFIC SIGNAL UPGRADE**
**LEAVENWORTH AND PINE STREETS
SCHEDULES**

SPECIFICATION NO.
1986N
DRAWING NO.
E-18
FILE NO.
74459
REV. NO.
B