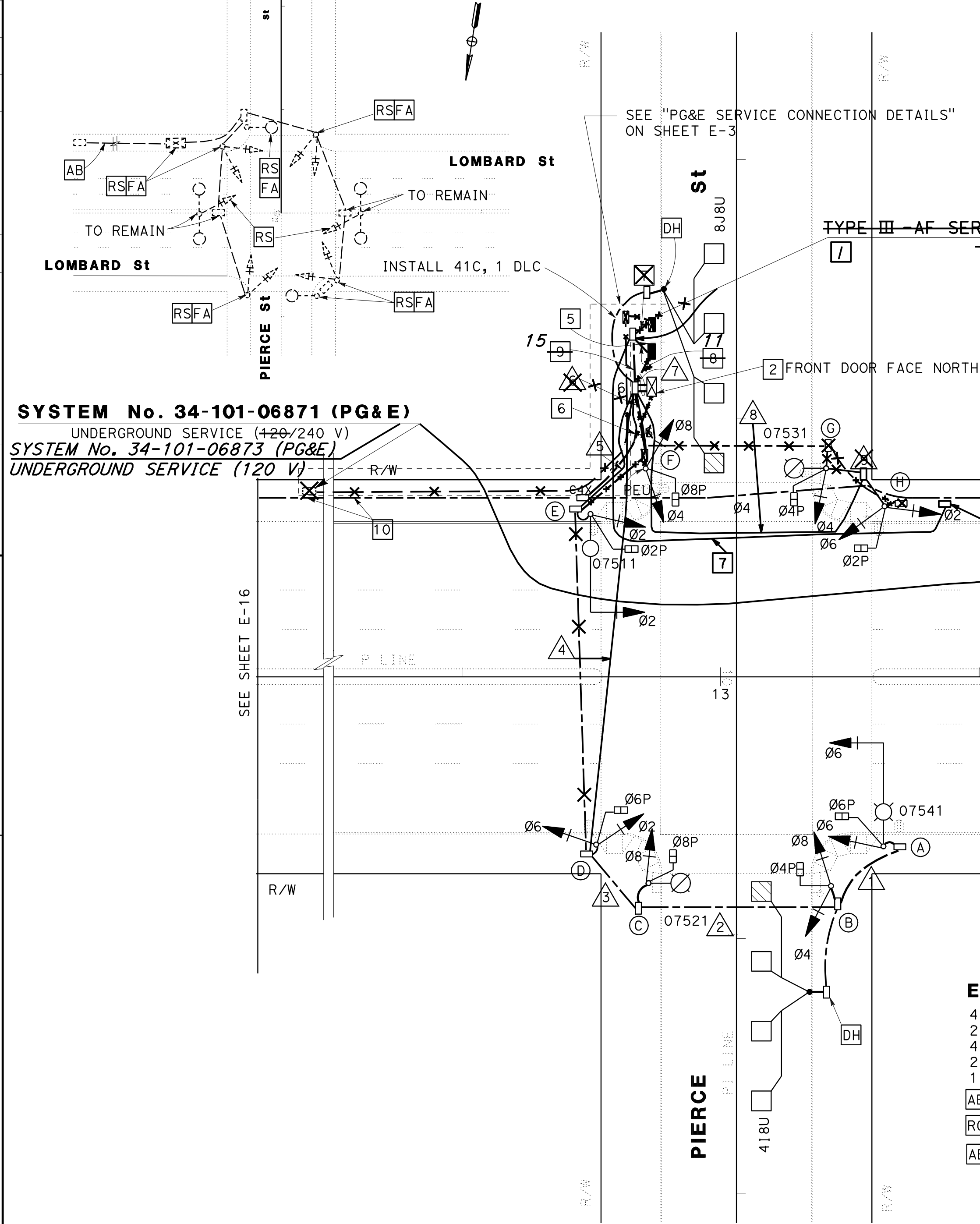
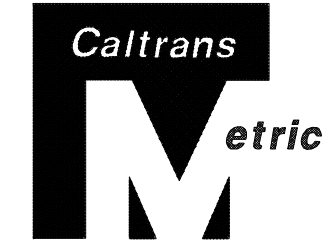


SYSTEM No. 34-101-06871 (PG&E)
 UNDERGROUND SERVICE (+20/240 V)
SYSTEM No. 34-101-06873 (PG&E)
 UNDERGROUND SERVICE (120 V)



** Signal Switchover: 6-21-2006 **
 Old equipment turned off: 9:21 AM
 Flash operation initiated: 9:29 AM
 3-color operation initiated: 9:41 AM



DIST	COUNTY	ROUTE	KILOMETER POST TOTAL PROJECT	SHEET No	TOTAL SHEETS
04	SF	101	10.8/12.9	41	61

REGISTERED ELECTRICAL ENGINEER

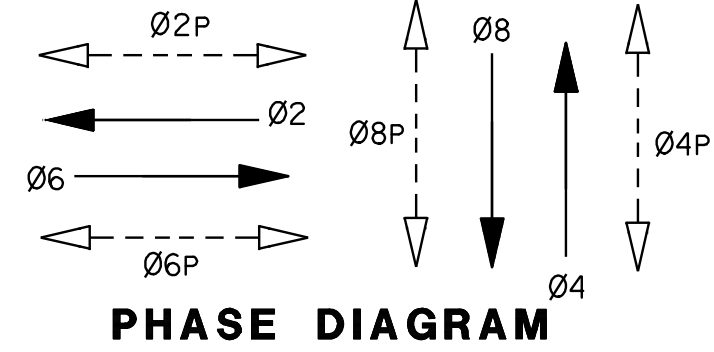
8-9-04
 PLANS APPROVAL DATE

The State of California or its officers or agents shall not be responsible for the accuracy or completeness of electronic copies of this plan sheet.

Caltrans now has a web site! To get to the web site, go to: <http://www.dot.ca.gov>

Resident Engineer Responsible for Construction Changes

CONTRACT No. 04-171204
 DATE ACCEPTED 12/20/06
AS BUILT
 RESIDENT ENGINEER F Duan
 SIGNATURE _____ DATE 12/12/07
 CHECKED BY R.L. DATE 04/08



ROUTE 101 (LOMBARD St)

EXISTING EQUIPMENT TO BE REMOVED AND SALVAGED

- 4 CITY CONCRETE POLE (SIMILAR TYPE 1-A)
- 2 CITY TYPE D CONCRETE STREET LIGHT STANDARD AND LUMINAIRE
- 4 TYPE TV-2-T SIGNAL HEAD MOUNTING
- 2 TYPE SV-1-T SIGNAL HEAD MOUNTING
- 1 TYPE "M" INTERSECTION CONTROLLER ASSEMBLY
- AB ALL CONDUITS AND CONDUCTORS RELATED TO EXISTING TRAFFIC SIGNAL SYSTEM EXCEPT AS NOTED
- RC ALL PULL BOXES RELATED TO EXISTING TRAFFIC SIGNAL SYSTEM EXCEPT AS NOTED
- AB EXISTING INTERCONNECTION CABLE (sic)

THIS PLAN IS ACCURATE FORELECTRICAL WORK ONLY

MODIFY SIGNAL AND LIGHTING
LOCATION 9
ROUTE 101 (LOMBARD St)/PIERCE St
 SCALE 1:200
E-18

FOR REDUCED PLANS ORIGINAL
 SCALE IS IN MILLIMETERS



ALL DIMENSIONS ARE IN
 METERS UNLESS OTHERWISE SHOWN

USERNAME => s117499
 DGN FILE => 417120U018.asb

CU 04220

EA 171201

